

Bath spout with pop-up waste and overflow - Brushed Champagne (22kt Gold) SERIES-VARIOUS

36 247 970 Product version from 3/13/2017



- drain Ø 52mm
- max. flow 27.8 l/min at 3 bar flow pressure

Also suitable for king-size baths.

In combination with 35 021 970 90 concealed single-lever mixer, is intrinsically safe under DIN EN 1717. Alternatively, ensure protection with vacuum breaker 35 150 970 90.

Also suitable for king-size baths.

In combination with 35 021 970 90 concealed single-lever mixer, is intrinsically safe under DIN EN 1717. Alternatively, ensure protection with vacuum breaker 35 150 970 90.

	Brushed Champagne (22kt Gold)	36 247 970-46
	Chrome	36 247 970-00
	Brushed Platinum	36 247 970-06
	Platinum	36 247 970-08
	Durabrand (23kt Gold)	36 247 970-09
	Dark Chrome	36 247 970-19
	Light Gold	36 247 970-26
	Brushed Light Gold	36 247 970-27
	Brushed Durabrand (23kt Gold)	36 247 970-28
	Matte Black	36 247 970-33
	Brushed Bronze	36 247 970-42
	Champagne (22kt Gold)	36 247 970-47
	Brushed Chrome	36 247 970-93
	Brushed Dark Platinum	36 247 970-99

Required miscellaneous



Bath spout with pop-up waste and overflow - 35 248 970 90
 •bowden cable length 725 mm

Required miscellaneous



Vacuum breaker - 35 150 970 90
 •3/4" connection

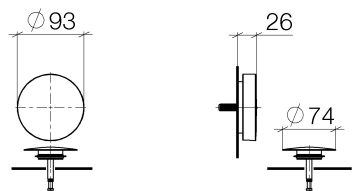
Required miscellaneous



Vacuum breaker - Brushed Champagne (22kt Gold) 36 150 970-46

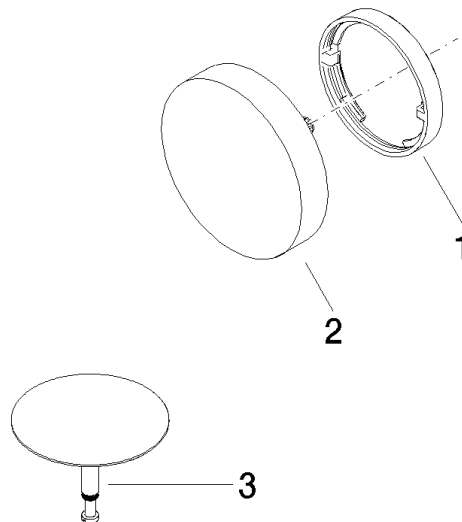
Bath spout with pop-up waste and overflow - Brushed Champagne (22kt Gold) SERIES-VARIOUS

36 247 970 Product version from 3/13/2017



Bath spout with pop-up waste and overflow - Brushed Champagne (22kt Gold) SERIES-VARIOUS

36 247 970 Product version from 3/13/2017



Spare parts list

No.	Item Number	Name	Quantity used	Delivery time
3	04 31 20 031 48-46	plug	1.00	-
Spare part can no longer be ordered, please order the replacement item				
1	09 11 01 124-46	cover	1.00	30
2	90 20 97 061 00-46	handle	1.00	30