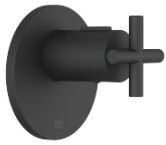


TARA xTOOL Concealed thermostat without volume control 3/4" - Matte Black

TARA

36 503 892 Product version from 5/1/2022



- cover plate Ø 123 mm
- temperature control handle with safety limit stop at 38°C
- thermostat cartridge
- WRAS

| | | |
|---|--------------------------------|---------------|
|  | Matte Black | 36 503 892-33 |
|  | Chrome | 36 503 892-00 |
|  | Brushed Platinum | 36 503 892-06 |
|  | Platinum | 36 503 892-08 |
|  | Dark Chrome | 36 503 892-19 |
|  | Brushed Durabronze (23kt Gold) | 36 503 892-28 |
|  | Brushed Bronze | 36 503 892-42 |
|  | Brushed Champagne (22kt Gold) | 36 503 892-46 |
|  | Champagne (22kt Gold) | 36 503 892-47 |
|  | Brushed Chrome | 36 503 892-93 |
|  | Brushed Dark Platinum | 36 503 892-99 |

Required miscellaneous



xTOOL Concealed thermostat module without volume control - 35 503 970 90

- max. recess depth 160 mm
- min. recess depth 95 mm

Recommended miscellaneous



xGRID Attachment set for integrating in the dry wall construction - 12 340 970 90

Required miscellaneous



xGRID Installation track 555 mm - 12 360 970 90

mm [inches]



Flow rate chart



Codes & Standards

DIN 4109

ISO 3822

Scottish Water
Byelaws

UK Water Supply
Regulations

Ü-Zeichen



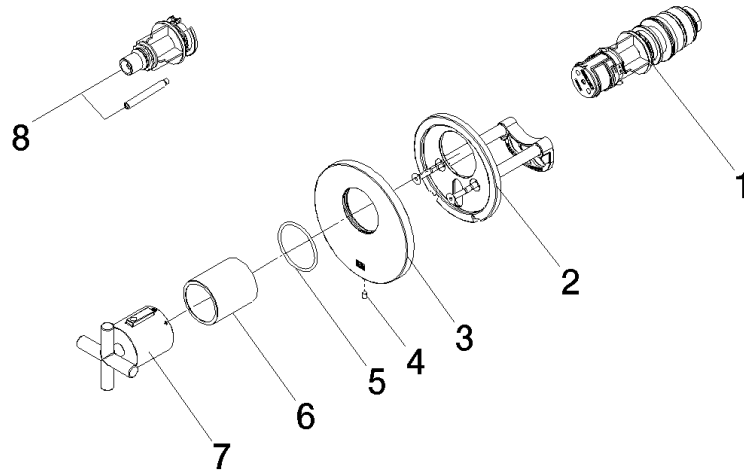
TARA xTOOL Concealed thermostat without volume control 3/4" - Matte Black

TARA

36 503 892 Product version from 5/1/2022

Certificates and sustainability

| | | | |
|-----------|--------|--------|--------|
| WRAS_2011 | LGA_29 | LGA_29 | LGA_29 |
|-----------|--------|--------|--------|



Spare parts list

| No. | Item Number | Name | Quantity used | Delivery time |
|-----|--------------------|-------------------|---------------|---------------|
| 4 | 09 31 11 048 90 | pin | 1.00 | 2 |
| 3 | 09 11 02 537-33 | cover | 1.00 | 30 |
| 8 | 12 178 970 90 | Extension 46 mm - | 1.00 | 2 |
| 2 | 90 11 01 196 00 90 | base | 1.00 | 2 |
| 7 | 90 17 33 027 00-33 | handle | 1.00 | 30 |
| 5 | 90 14 10 049 00 90 | seal | 1.00 | 2 |
| 6 | 90 21 02 112 00-33 | sleeve | 1.00 | 30 |
| 1 | 90 15 02 063 00 90 | cartridge | 1.00 | 2 |