




36 525 979




- HORIZONTAL RAIN, max. flow rate 9 l/min (at 3 bar)
- with anti-scale system
- cover plate 120 x 120 mm

Fits: IMO, LULU, MADISON, MEM, TARA, CL.1, LISSÉ, VAIA, META, CYO

	Brushed Durabross (23kt Gold)	36 525 979-28
	Chrome	36 525 979-00
	Brushed Platinum	36 525 979-06
	Platinum	36 525 979-08
	Dark Chrome	36 525 979-19
	Light Gold	36 525 979-26
	Brushed Light Gold	36 525 979-27
	Matte Black	36 525 979-33
	Brushed Bronze	36 525 979-42
	Brushed Champagne (22kt Gold)	36 525 979-46
	Champagne (22kt Gold)	36 525 979-47
	Brushed Chrome	36 525 979-93
	Brushed Dark Platinum	36 525 979-99


Required miscellaneous

	WATER POINTS Adapter plate -	12 305 970 90
---	-------------------------------------	---------------


Required miscellaneous

	Concealed wall installation box -	35 205 970 90
	• max. recess depth 110 mm	
	• min. recess depth 85 mm	

Recommended miscellaneous

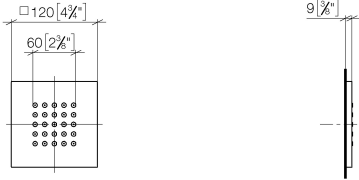
	xGRID Attachment set for integrating in the dry wall construction -	12 340 970 90
---	--	---------------

Required miscellaneous

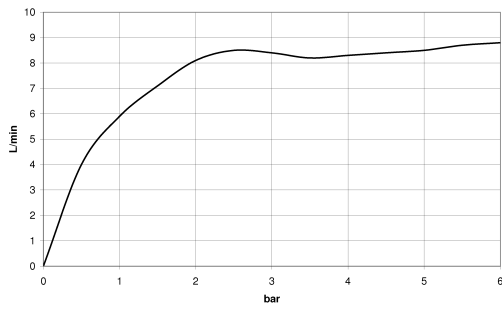
	xGRID Installation track 555 mm -	12 360 970 90
---	--	---------------

36 525 979

mm [inches]



Flow rate chart



Codes & Standards

DIN 4109

ISO 3822

Ü-Zeichen



WATER POINTS Concealed body spray - Brushed Durabross (23kt Gold)

IMO

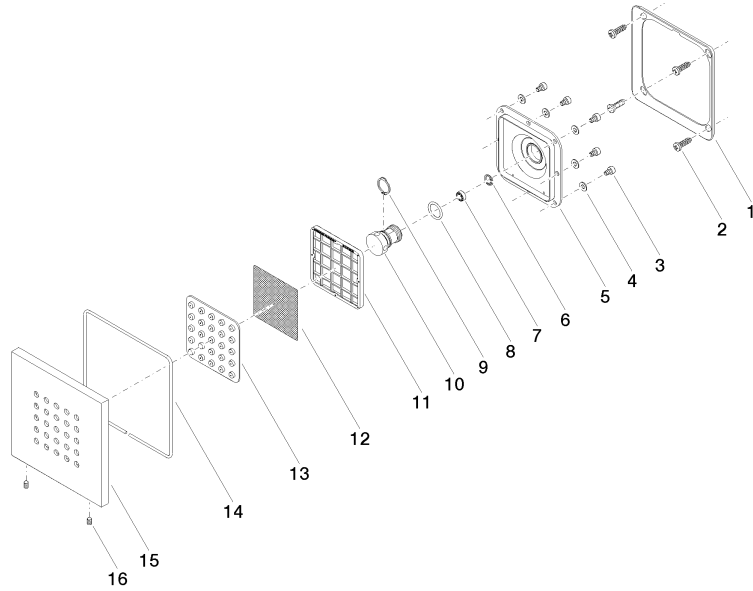
36 525 979

Certificates

LGA_38

36 525 979

Product version from 10/1/2023





WATER POINTS Concealed body spray - Brushed Durabross (23kt Gold)

IMO

36 525 979

Spare parts list

Product version from 10/1/2023

No.	Item Number	Name	Quantity used	Delivery time
	09 28 01 024 90	holder	34	2