

VAIA Wall valve clockwise closing 1/2" - Brushed Dark Platinum

VAIA

36 607 819    Product version from 4/1/2025



- rosette Ø 60 mm
- head part with cut-to-length spindle and sleeve
- WRAS

|  |                                |               |
|--|--------------------------------|---------------|
|   | Brushed Dark Platinum          | 36 607 819-99 |
|   | Chrome                         | 36 607 819-00 |
|   | Brushed Platinum               | 36 607 819-06 |
|   | Platinum                       | 36 607 819-08 |
|   | Dark Chrome                    | 36 607 819-19 |
|   | Brushed Durabronze (23kt Gold) | 36 607 819-28 |
|   | Brushed Dark Brass             | 36 607 819-39 |
|   | Brushed Bronze                 | 36 607 819-42 |
|   | Brushed Champagne (22kt Gold)  | 36 607 819-46 |
|  | Champagne (22kt Gold)          | 36 607 819-47 |

Required miscellaneous



- Wall valve 1/2" -

•max. recess depth 145 mm

•min. recess depth 75 mm

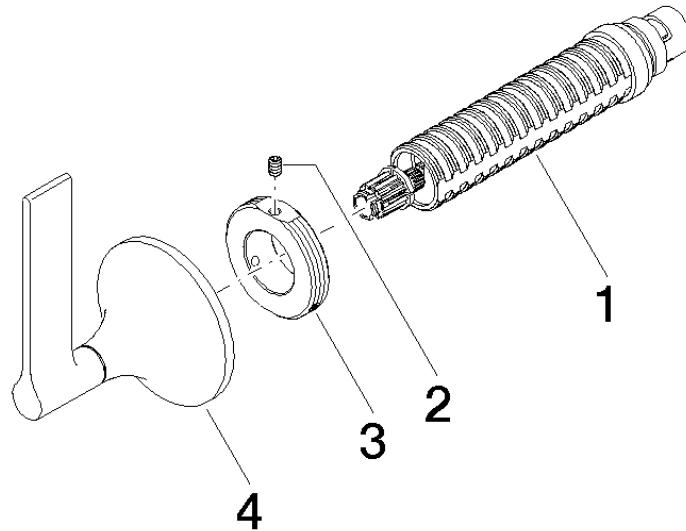
35 607 970 90

mm [inches]



| Codes & Standards |          |                        |                             |
|-------------------|----------|------------------------|-----------------------------|
| ASME A112.18.1    | cUPC     | DIN 4109               | EN 1111                     |
| EN 200            | ISO 3822 | Scottish Water Byelaws | UK Water Supply Regulations |
| Ü-Zeichen         |          |                        |                             |

| Certificates and sustainability |              |        |           |                 |
|---------------------------------|--------------|--------|-----------|-----------------|
| DVGW_DW-6501DN0                 | WRAS_2011    | LGA_29 | WRAS_2010 | DVGW_DW-6512DN0 |
| LGA_29                          | IAPMO_4976 ( |        |           |                 |



### Spare parts list

| No. | Item Number        | Name   | Quantity used | Delivery time |
|-----|--------------------|--------|---------------|---------------|
| 4   | 90 20 80 015 00-99 | handle | 1.00          | 20            |
| 3   | 09 21 02 163 90    | disc   | 1.00          | 2             |
| 2   | 09 31 11 008 90    | pin    | 1.00          | 2             |
| 1   | 90 90 03 143 00 90 | top    | 1.00          | 2             |