



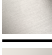




MADISON Wall-mounted basin mixer without pop-up waste - Brushed Dark Brass

MADISON

36 712 361 Product version from 7/3/2016



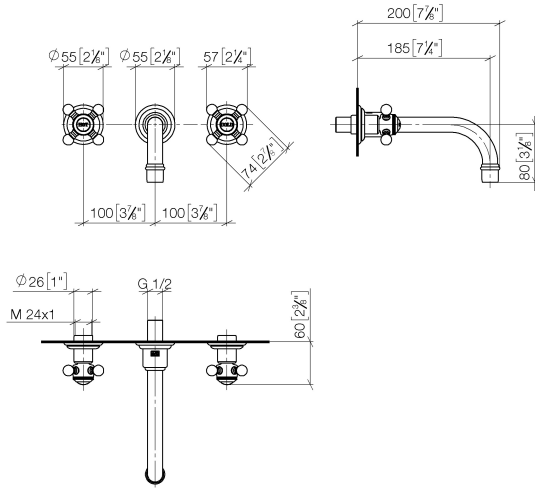
- 190mm projection
- fixed spout
- circular, air-enriched flow
- hole diameter valve 40 mm
- hole diameter spout 40 mm
- slide-on rosettes Ø 55 mm
- max. flow 7 l/min
- lead-free
- This product can help a building meet the requirements of Green Building Rating Systems, e.g. LEED®, BREEAM®, DGNB

| | | |
|---|-------------------------------|---------------|
|  | Brushed Dark Brass | 36 712 361-39 |
|  | Chrome | 36 712 361-00 |
|  | Brushed Platinum | 36 712 361-06 |
|  | Platinum | 36 712 361-08 |
|  | Durabrass (23kt Gold) | 36 712 361-09 |
|  | Brushed Durabrass (23kt Gold) | 36 712 361-28 |
|  | Brushed Dark Platinum | 36 712 361-99 |

MADISON Wall-mounted basin mixer without pop-up waste - Brushed Dark Brass

MADISON

36 712 361 Product version from 7/3/2016
mm [inches]



Flow rate chart



Codes & Standards

DIN 4109

ISO 3822

Scottish Water
Byelaws

UK Water Supply
Regulations

Ü-Zeichen



MADISON Wall-mounted basin mixer without pop-up waste - Brushed Dark Brass

MADISON

36 712 361 Product version from 7/3/2016

Certificates and sustainability

LGA_19

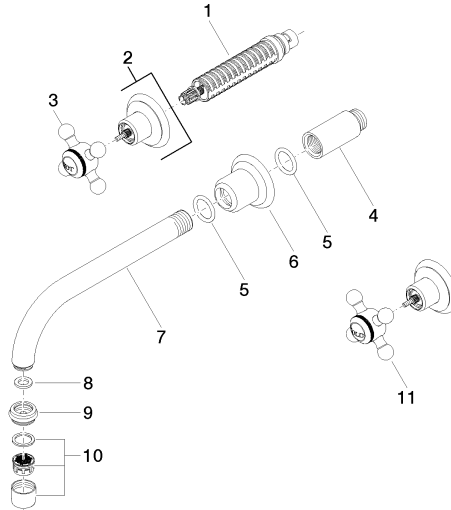
WRAS_250402

MADISON Wall-mounted basin mixer without pop-up waste - Brushed Dark Brass

MADISON

36 712 361 Product version from 7/3/2016

Parts for other finishes can be found here: [Chrome](#)



36 712 361-FF

Spare parts list

| No. | Item Number | Name | Quantity used | Delivery time |
|--|--------------------|---|---------------|---------------|
| 7 | 04 28 22 090 10-39 | spout | 1.00 | 60 |
| 3 | 04 20 36 100 01-39 | handle (hot) | 1.00 | - |
| Spare part can no longer be ordered, please order the replacement item | | | | |
| 5 | 90 14 10 026 00 90 | seal | 1.00 | 2 |
| 2 | 36 310 361-39 | MADISON Wall valve - Brushed Dark Brass | 2.00 | 30 |
| 9 | 09 24 03 022 10-39 | nipple | 1.00 | 60 |
| 11 | 04 20 36 100 00-39 | handle (cold) | 1.00 | - |
| Spare part can no longer be ordered, please order the replacement item | | | | |
| 4 | 09 24 03 081 10 90 | extension | 1.00 | 2 |
| 8 | 90 14 05 020 00 90 | seal | 1.00 | 2 |
| 10 | 90 23 01 119 02-39 | aerator | 1.00 | 30 |
| 1 | 90 90 03 157 00 90 | top | 2.00 | 2 |
| 6 | 09 27 36 010-39 | rosette | 1.00 | 60 |