

36 712 809 Product version from 3/13/2017

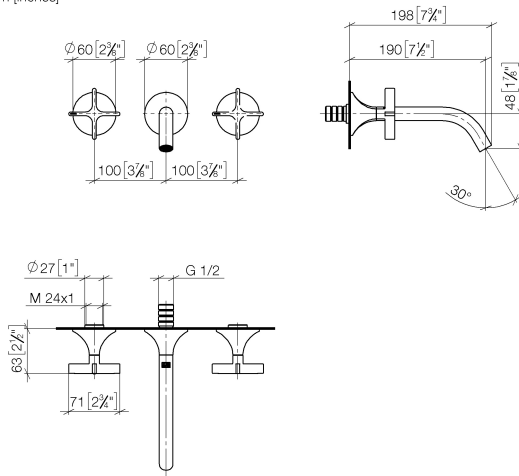


- 190mm projection
- fixed spout
- circular, air-enriched flow
- hole diameter valve 37 mm
- hole diameter spout 40 mm
- rosettes Ø 60 mm
- max. flow 5.7 l/min
- lead-free
- This product can help a building meet the requirements of Green Building Rating Systems, e.g. LEED®, BREEAM®, DGNB
- WRAS

	Brushed Dark Brass	36 712 809-39
	Chrome	36 712 809-00
	Brushed Platinum	36 712 809-06
	Platinum	36 712 809-08
	Dark Chrome	36 712 809-19
	Brushed Durabronze (23kt Gold)	36 712 809-28
	Brushed Bronze	36 712 809-42
	Brushed Champagne (22kt Gold)	36 712 809-46
	Champagne (22kt Gold)	36 712 809-47
	Brushed Dark Platinum	36 712 809-99

36 712 809 Product version from 3/13/2017

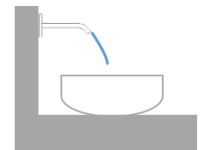
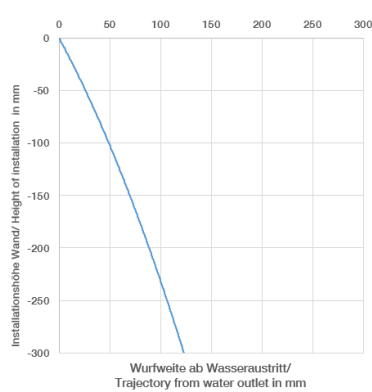
mm [inches]



Flow rate chart



Trajectory diagram



## Codes & Standards

DIN 4109

ISO 3822

Scottish Water  
Byelaws

UK Water Supply  
Regulations

Ü-Zeichen



## VAIA Wall-mounted basin mixer without pop-up waste - Brushed Dark Brass

---

VAIA

36 712 809 Product version from 3/13/2017

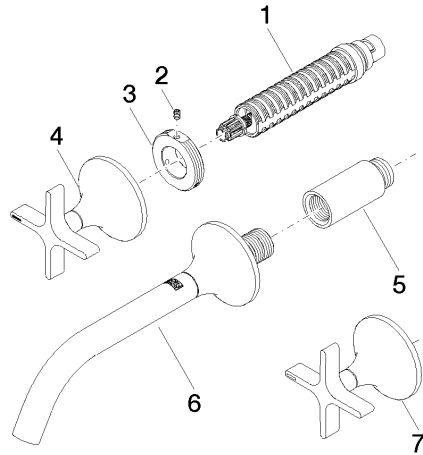
### Certificates and sustainability

---

LGA\_29

WRAS\_2312

Parts for other  
finishes can be found  
here: [Chrome](#)



## Spare parts list

No.	Item Number	Name	Quantity used	Delivery time
4	90 20 80 011 00-39	handle ( hot )	1.00	30
3	09 21 02 163 90	disc	2.00	2
7	90 20 80 010 00-39	handle ( cold )	1.00	30
6	13 800 809-39	VAIA Wall-mounted basin spout without pop-up waste - Brushed Dark Brass	1.00	30
5	09 24 03 081 10 90	extension	1.00	2
2	09 31 11 008 90	pin	2.00	2
1	90 90 03 157 00 90	top	2.00	2