

MEM Wall-mounted single-lever basin mixer without pop-up waste - Champagne (22kt Gold)

MEM

36 860 782



- 177mm projection
- fixed spout
- rectangular, air-enriched flow
- hole diameter spout 37 mm
- hole diameter single-lever mixer 57 mm
- rosette for spout 80 x 60mm
- rosette for mixer 80 x 80mm
- max. flow 5.7 l/min
- lead-free
- This product can help a building meet the requirements of Green Building Rating Systems, e.g. LEED®, BREEAM®, DGNB
- WRAS

| | | |
|--|--------------------------------|---------------|
| | Champagne (22kt Gold) | 36 860 782-47 |
| | Chrome | 36 860 782-00 |
| | Brushed Platinum | 36 860 782-06 |
| | Platinum | 36 860 782-08 |
| | Dark Chrome | 36 860 782-19 |
| | Brushed Durabronze (23kt Gold) | 36 860 782-28 |
| | Brushed Champagne (22kt Gold) | 36 860 782-46 |
| | Brushed Dark Platinum | 36 860 782-99 |

Required miscellaneous



Concealed wall-mounted single-lever mixer on right - 35 816 970 90

•NOTE:Not suitable for concealed installation.Connection by means of angle valves, mounted with screws to back wall.

Required miscellaneous



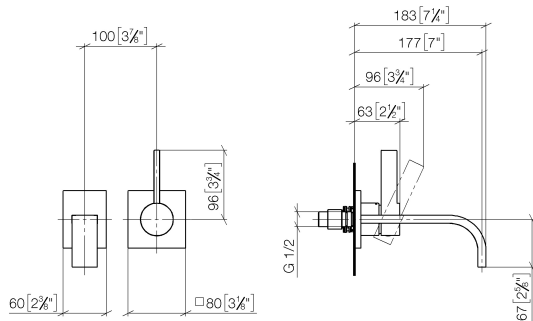
Concealed wall-mounted single-lever mixer - 35 860 970 90

•max. recess depth 95 mm
•min. recess depth 80 mm
•mixer can be placed above, to the left or to the right of the spout.

MEM Wall-mounted single-lever basin mixer without pop-up waste - Champagne (22kt Gold)

MEM

36 860 782
mm [inches]



Flow rate chart



Codes & Standards

DIN 4109

EN 817

ISO 3822

Scottish Water
Byelaws

UK Water Supply
Regulations

Ü-Zeichen



MEM Wall-mounted single-lever basin mixer without pop-up waste -
Champagne (22kt Gold)

MEM

36 860 782

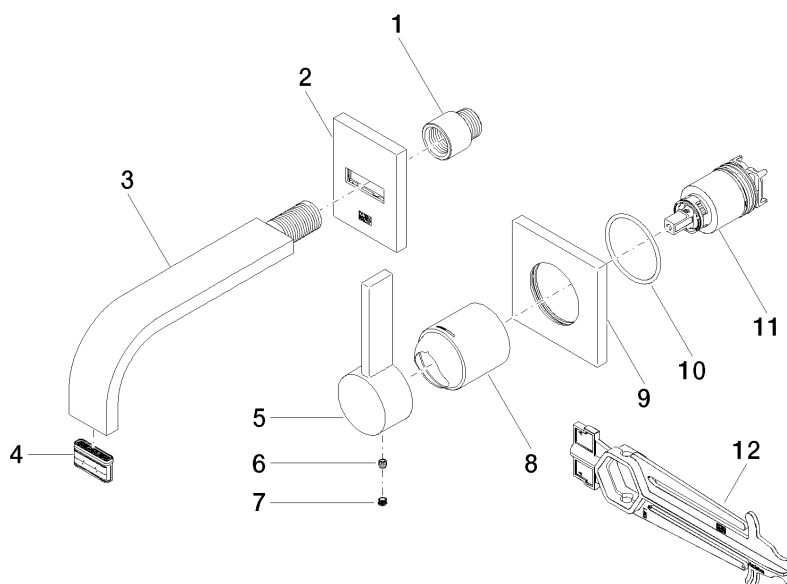
Certificates and sustainability

| | | |
|--------|---------------------|-----------|
| LGA_29 | DVGW_DW- 6512DN0 | WRAS_2107 |
|--------|---------------------|-----------|

MEM Wall-mounted single-lever basin mixer without pop-up waste - Champagne (22kt Gold)

MEM

36 860 782



Spare parts list

| No. | Item Number | Name | Quantity used | Delivery time |
|-----|--------------------|-----------|---------------|---------------|
| 8 | 09 11 02 288-47 | cover | 1.00 | 30 |
| 1 | 09 24 03 072 10 90 | nipple | 1.00 | 2 |
| 4 | 90 29 03 109 00 90 | aerator | 1.00 | 2 |
| 11 | 90 15 05 064 01 90 | cartridge | 1.00 | 2 |
| 9 | 09 27 78 039-47 | rosette | 1.00 | 60 |
| 5 | 09 20 78 058-47 | handle | 1.00 | 60 |
| 2 | 90 27 78 038 00-47 | rosette | 1.00 | 30 |
| 3 | 04 28 22 150 10-47 | spout | 1.00 | 30 |
| 12 | 90 30 09 064 00 90 | key | 1.00 | 2 |
| 7 | 90 31 20 109 00 90 | plug | 1.00 | 2 |
| 6 | 90 31 11 030 00 90 | pin | 1.00 | 2 |
| 10 | 90 14 10 049 00 90 | seal | 1.00 | 2 |