

LISSE

Wall-mounted single-lever basin mixer without pop-up waste - Matte Black

LISSE

36 861 845	Product version from 4/1/2024		
	<ul style="list-style-type: none"> • 210mm projection • fixed spout • circular, air-enriched flow • hole diameter spout 37 mm • hole diameter single-lever mixer 57 mm • rosette 78 x 78 mm • max. flow 5.7 l/min • lead-free • This product can help a building meet the requirements of Green Building Rating Systems, e.g. LEED®, BREEAM®, DGNB • WRAS 	<div> <div></div> <div>Matte Black</div> <div>36 861 845-33</div> </div> <div> <div></div> <div>Chrome</div> <div>36 861 845-00</div> </div> <div> <div></div> <div>Brushed Platinum</div> <div>36 861 845-06</div> </div> <div> <div></div> <div>Dark Chrome</div> <div>36 861 845-19</div> </div> <div> <div></div> <div>Brushed Light Gold</div> <div>36 861 845-27</div> </div> <div> <div></div> <div>Brushed Chrome</div> <div>36 861 845-93</div> </div> <div> <div></div> <div>Brushed Dark Platinum</div> <div>36 861 845-99</div> </div>	

Required miscellaneous

	<div> <div></div> <div> <div>Concealed wall-mounted single-lever mixer -</div> <ul style="list-style-type: none"> • max. recess depth 95 mm • min. recess depth 80 mm • mixer can be placed above, to the left or to the right of the spout. </div> </div>	35 860 970 90
--	---	---------------

Required miscellaneous

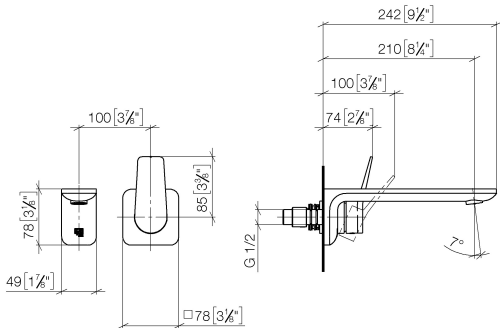
	<div> <div></div> <div> <div>Concealed wall-mounted single-lever mixer mixer on right -</div> <ul style="list-style-type: none"> • NOTE:Not suitable for concealed installation.Connection by means of angle valves, mounted with screws to back wall. </div> </div>	35 816 970 90
--	---	---------------



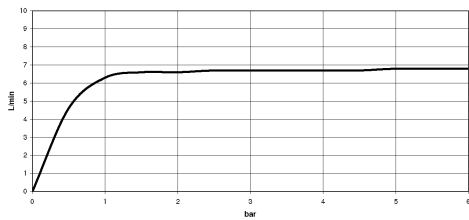
LISSE Wall-mounted single-lever basin mixer without pop-up waste - Matte Black

LISSE

36 861 845 Product version from 4/1/2024
mm [inches]



Flow rate chart



Codes & Standards

ASME A112.18.1	cUPC	EN 817	EPA WaterSense
NSF372	NSF61	Scottish Water Byelaws	UK Water Supply Regulations

WaterSense





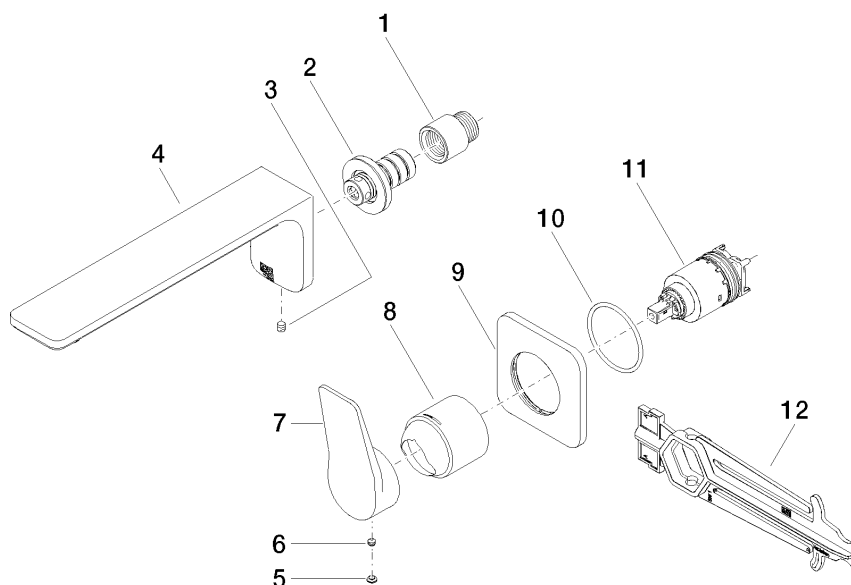
LISSE Wall-mounted single-lever basin mixer without pop-up waste - Matte Black

LISSE

36 861 845 Product version from 4/1/2024

Certificates and sustainability

IAPMO_N-4976	DVGW_DW-6512DN0	IAPMO_6397	WRAS_2107	IAPMO_4976 (
IAPMO_8834				



Spare parts list

No.	Item Number	Name	Quantity used	Delivery time
4	90 11 84 023 00-33	spout	1.00	30
1	09 24 03 072 10 90	nipple	1.00	2
8	09 11 02 288-33	cover	1.00	30
5	90 31 20 087 00-33	plug	1.00	30
7	09 20 84 021-33	handle	1.00	30
2	90 24 03 108 00 90	nipple set	1.00	2
11	90 15 05 064 01 90	cartridge	1.00	2
3	90 31 11 004 00 90	pin	1.00	2
6	90 31 11 063 00 90	pin	1.00	2
10	90 14 10 049 00 90	seal	1.00	2
12	90 30 09 064 00 90	key	1.00	2
9	90 27 84 020 00-33	rosette	1.00	30