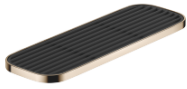


Shelf wall model - Champagne (22kt Gold)

SERIES SPECIFIC

83 482 970 Product version from 10/1/2023



- width 300mm
- height 26 mm
- 100mm projection
- without grid element

| | | |
|---|--------------------------------|---------------|
|  | Champagne (22kt Gold) | 83 482 970-47 |
|  | Chrome | 83 482 970-00 |
|  | Brushed Platinum | 83 482 970-06 |
|  | Platinum | 83 482 970-08 |
|  | Dark Chrome | 83 482 970-19 |
|  | Light Gold | 83 482 970-26 |
|  | Brushed Light Gold | 83 482 970-27 |
|  | Brushed Durabronze (23kt Gold) | 83 482 970-28 |
|  | Matte Black | 83 482 970-33 |
|  | Brushed Dark Brass | 83 482 970-39 |
|  | Brushed Bronze | 83 482 970-42 |
|  | Brushed Champagne (22kt Gold) | 83 482 970-46 |
|  | Brushed Chrome | 83 482 970-93 |
|  | Brushed Dark Platinum | 83 482 970-99 |

Required miscellaneous

| | |
|-----------------------------------|---------------|
| Grid element - Matte Black | 82 482 970-33 |
| •plastic grid elements | |

Required miscellaneous

| | |
|------------------------------------|---------------|
| Grid element - Creamy White | 82 482 970-51 |
| •plastic grid elements | |

Required miscellaneous

| | |
|----------------------------------|---------------|
| Grid element - Light Grey | 82 482 970-52 |
| •plastic grid elements | |

Required miscellaneous

| | |
|-----------------------------|---------------|
| Grid element - Taupe | 82 482 970-53 |
| •plastic grid elements | |

Shelf wall model - Champagne (22kt Gold)

SERIES SPECIFIC

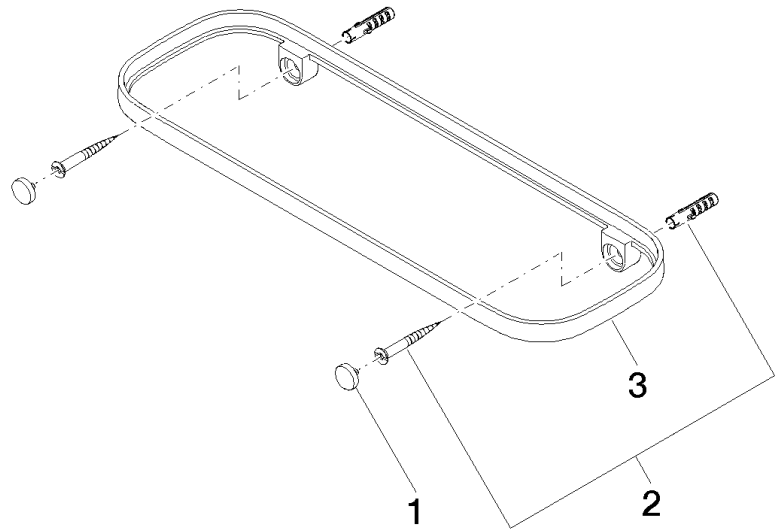
83 482 970 Product version from 10/1/2023

mm [inches]



83 482 970 Product version from 10/1/2023

Parts for other
finishes can be found
here: [Chrome](#)



Spare parts list

| No. | Item Number | Name | Quantity used | Delivery time |
|-----|--------------------|------------|---------------|---------------|
| 2 | 05 30 31 002 00 90 | fixing set | 1.00 | 2 |
| 1 | 90 30 30 520 00-47 | set | 1.00 | 30 |
| 3 | 08 17 97 578-47 | holder | 1.00 | 30 |