















Pomme de douche arrosoir à fixation murale 220 mm - Champagne brossé (Or 22cts) SERIES SPECIFIC

28 649 970 Version du produit de 13/03/2017



- saillie 450 mm
- Ø de pomme de douche arrosoir 220 mm
- PURE RAIN, débit max. 14 l/min (à 3 bar)
- Fonction à partir de: 7 l/min
- rosace Ø 60 mm
- raccord 1/2"
- avec système anti-calcaire
- avec fonction anti-gouttes

	Champagne brossé (Or 22cts)	28 649 970-46
	Chrome	28 649 970-00
	Platine brossé	28 649 970-06
	Platine	28 649 970-08
	Dark Chrome	28 649 970-19
	Light Gold	28 649 970-26
	Light Gold brossé	28 649 970-27
	Laiton brossé (Or 23cts)	28 649 970-28
	Noir mat	28 649 970-33
	Dark Brass brossé	28 649 970-39
	Bronze brossé	28 649 970-42
	Champagne (Or 22cts)	28 649 970-47
	Chrome brossé	28 649 970-93
	Dark Platinum brossé	28 649 970-99

Accessoires recommandés



- Coude mural à encastrer -** 35 085 970 90
- profondeur de montage max. 163 mm
 - profondeur de montage mini. 90 mm



Pomme de douche arrosoir à fixation murale 220 mm - Champagne brossé (Or SERIES SPECIFIC 22cts)

28 649 970 Version du produit de 13/03/2017
mm [inches]

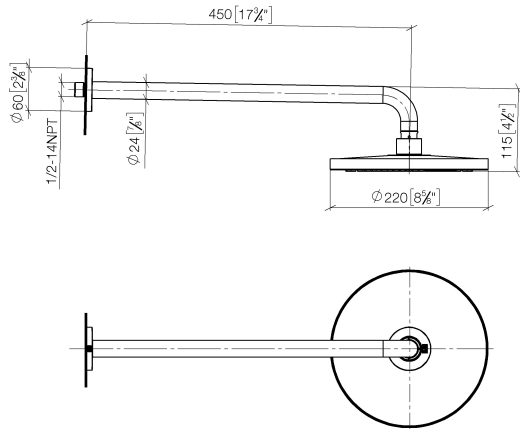
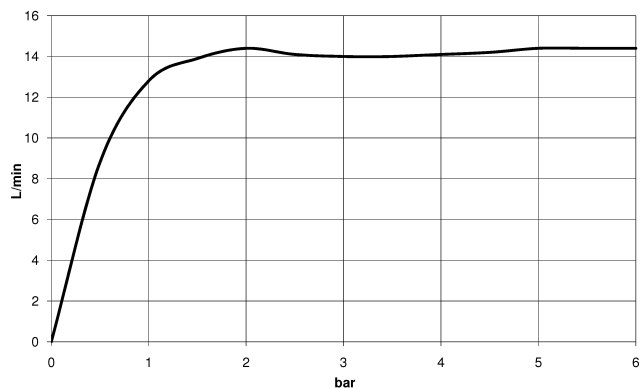


Diagramme de débit



Codes & Standards

DIN 4109

EN 1112

ISO 3822

Scottish Water
Byelaws

UK Water Supply
Regulations

Ü-Zeichen



Pomme de douche arrosoir à fixation murale 220 mm - Champagne brossé (Or SERIES SPECIFIC 22cts)

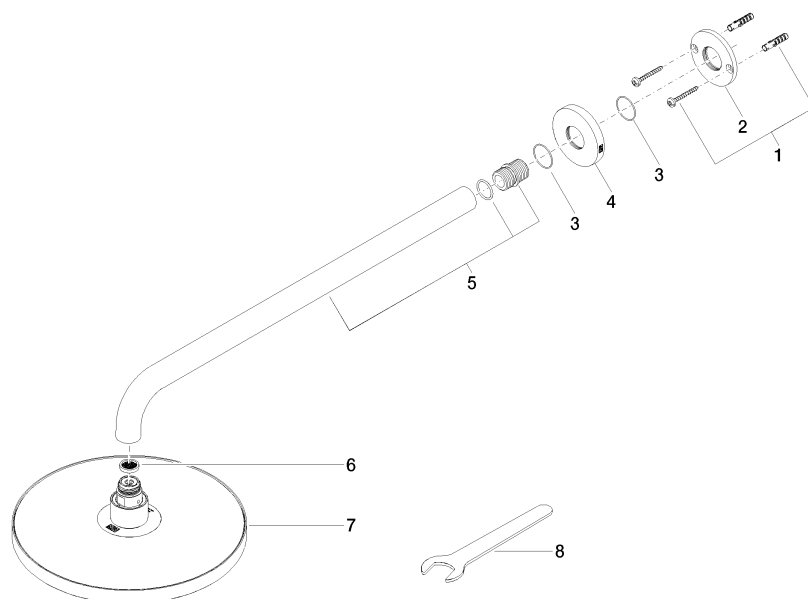
28 649 970 Version du produit de 13/03/2017

Certificats et durabilité

WRAS_2212	DVGW_DW-6517DN0	LGA_38
-----------	-----------------	--------

Pomme de douche arrosoir à fixation murale 220 mm - Champagne brossé (Or SERIES SPECIFIC 22cts)

28 649 970 Version du produit de 13/03/2017



Liste des pièces de rechange

N°	Article Numéro	Désignation	Fréquence de montage	Délai de livraison
7	04 12 05 092 00-46	douche	1,00	60
5	90 11 03 070 00-46	tuyau	1,00	30
3	09 14 10 150 90	joint	2,00	2
2	09 17 20 120 90	patte de fixation	1,00	2
6	09 23 01 075 90	élément insérable	1,00	2
4	09 27 97 015-46	rosace	1,00	30
1	04 30 31 032 00 90	set de fixation	1,00	2
8	90 30 09 069 00 90	clé à écrou	1,00	2