

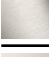





28 528 360



- pomme de douche Ø 55 mm
- rotule 25° pivotante (dans tous les sens)
- HORIZONTAL RAIN, débit max. 7 l/min (à 3 bar)
- rosace Ø 55 mm
- raccord 1/2"

	Laiton brossé (Or 23cts)	28 528 360-28
	Chrome	28 528 360-00
	Platine brossé	28 528 360-06
	Platine	28 528 360-08
	Laiton (Or 23cts)	28 528 360-09
	Dark Platinum brossé	28 528 360-99

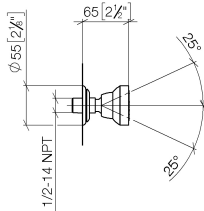
**Accessoires recommandés**



- Coude mural à encastrer -** 35 085 970 90
- profondeur de montage max. 163 mm
  - profondeur de montage mini. 90 mm

28 528 360

mm [inches]



**Diagramme de débit**



**Codes & Standards**

DIN 4109

ISO 3822

Scottish Water  
Byelaws

UK Water Supply  
Regulations

**Ü-Zeichen**



MADISON Douchette latérale sans réglage du débit - Laiton brossé (Or 23cts)

---

MADISON

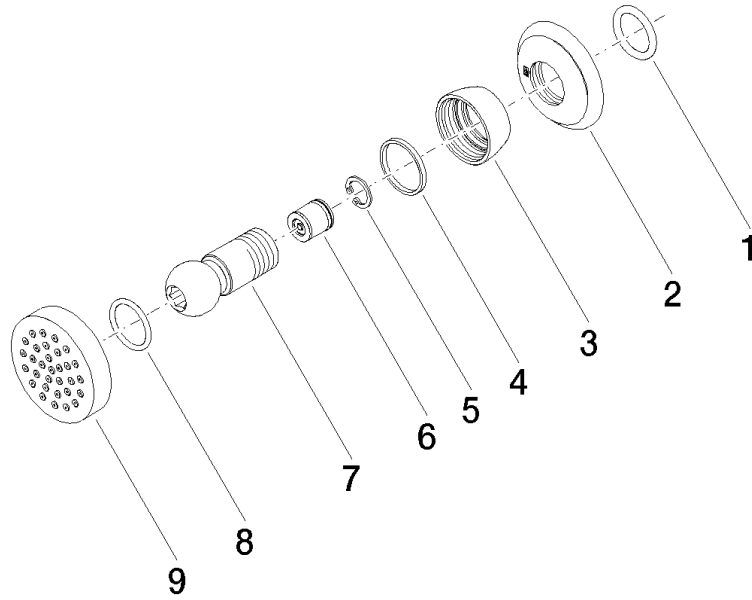
28 528 360

Certificats

---

LGA\_38

WRAS\_240602





**MADISON Douchette latérale sans réglage du débit - Laiton brossé (Or 23cts)**

MADISON

28 528 360

**Liste des pièces de rechange**

N°	Article Numéro	Désignation	Fréquence de montage	Délai de livraison
	90 14 10 026 00 90	joint	9	2