

TARA Bath spout for wall mounting - Brushed Platinum

TARA


13 801 892 Product version from 4/1/2024



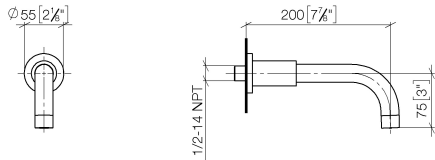
- 200mm projection
- circular normal flow
- rosette Ø 55 mm
- hole diameter 37 mm
- 1/2" connection
- max. flow 29 l/min at 3 bar flow pressure
- WRAS

	Brushed Platinum	13 801 892-06
	Chrome	13 801 892-00
	Platinum	13 801 892-08
	Dark Chrome	13 801 892-19
	Brushed Light Gold	13 801 892-27
	Brushed Durabrass (23kt Gold)	13 801 892-28
	Matte Black	13 801 892-33
	Brushed Dark Brass	13 801 892-39
	Brushed Bronze	13 801 892-42
	Brushed Champagne (22kt Gold)	13 801 892-46
	Champagne (22kt Gold)	13 801 892-47
	Brushed Chrome	13 801 892-93
	Brushed Dark Platinum	13 801 892-99

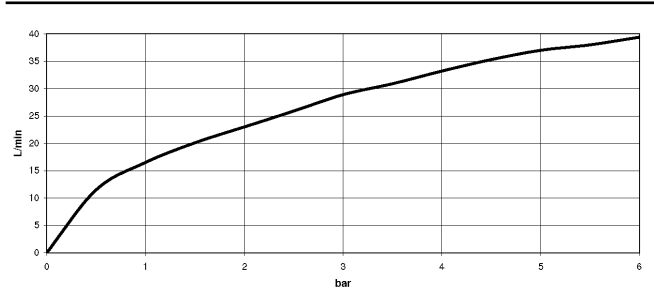
Required miscellaneous

	Concealed adapter -	35 080 970-90 0010
---	---------------------	--------------------

mm [inches]



Flow rate chart



Codes & Standards

ASME A112.18.1	cUPC	DIN 4109	ISO 3822
Scottish Water Byelaws	UK Water Supply Regulations	Ü-Zeichen	



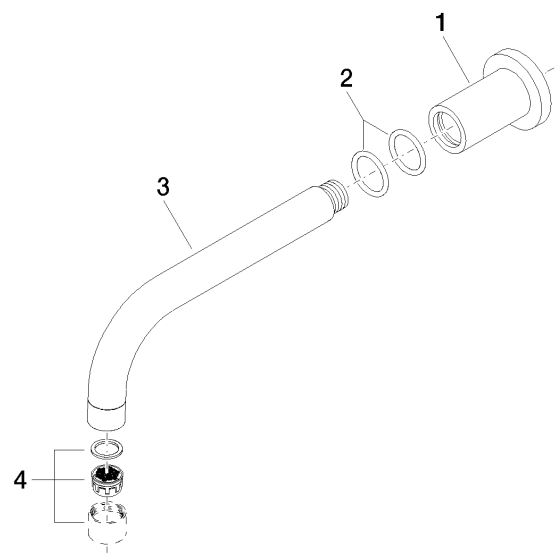
TARA Bath spout for wall mounting - Brushed Platinum

TARA

13 801 892 Product version from 4/1/2024

Certificates and sustainability

LGA_18	IAPMO_4976	WRAS_240602
--------	------------	-------------



Spare parts list

No.	Item Number	Name	Quantity used	Delivery time
1	09 27 89 009-06	rosette	1.00	10
3	04 28 22 198 20-06	spout	1.00	10
4	90 23 01 024 00-06	aerator	1.00	10
2	90 14 10 025 00 90	seal	2.00	2