

## TARA Bath spout for wall mounting - Brushed Light Gold

TARA

13 801 892 Product version from 4/1/2024



- 200mm projection
- circular normal flow
- rosette Ø 55 mm
- hole diameter 37 mm
- 1/2" connection
- max. flow 29 l/min at 3 bar flow pressure
- WRAS

|   |                                |               |
|---|--------------------------------|---------------|
|    | Brushed Light Gold             | 13 801 892-27 |
|    | Chrome                         | 13 801 892-00 |
|    | Brushed Platinum               | 13 801 892-06 |
|    | Platinum                       | 13 801 892-08 |
|    | Dark Chrome                    | 13 801 892-19 |
|    | Brushed Durabronze (23kt Gold) | 13 801 892-28 |
|    | Matte Black                    | 13 801 892-33 |
|    | Brushed Dark Brass             | 13 801 892-39 |
|    | Brushed Bronze                 | 13 801 892-42 |
|   | Brushed Champagne (22kt Gold)  | 13 801 892-46 |
|  | Champagne (22kt Gold)          | 13 801 892-47 |
|  | Brushed Chrome                 | 13 801 892-93 |
|  | Brushed Dark Platinum          | 13 801 892-99 |

mm [inches]



Flow rate chart



Codes & Standards

|          |          |                        |                             |
|----------|----------|------------------------|-----------------------------|
| DIN 4109 | ISO 3822 | Scottish Water Byelaws | UK Water Supply Regulations |
|----------|----------|------------------------|-----------------------------|

Ü-Zeichen



## TARA Bath spout for wall mounting - Brushed Light Gold

TARA

13 801 892 Product version from 4/1/2024

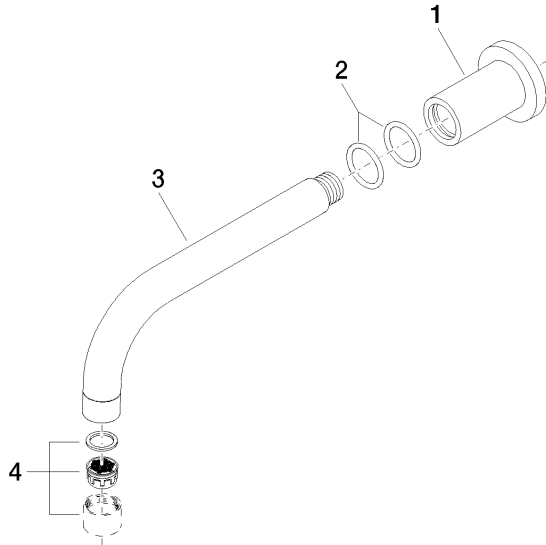
Certificates and sustainability

LGA\_18

WRAS\_240602

13 801 892    Product version from 4/1/2024

Parts for other  
finishes can be found  
here: [Chrome](#)



Spare parts list

| No. | Item Number        | Name    | Quantity used | Delivery time |
|-----|--------------------|---------|---------------|---------------|
| 3   | 04 28 22 198 20-27 | spout   | 1.00          | 60            |
| 1   | 09 27 89 009-27    | rosette | 1.00          | 60            |
| 2   | 90 14 10 025 00 90 | seal    | 2.00          | 2             |
| 4   | 90 23 01 024 00-27 | aerator | 1.00          | 20            |