

META Pillar tap cold water - Brushed Chrome

META

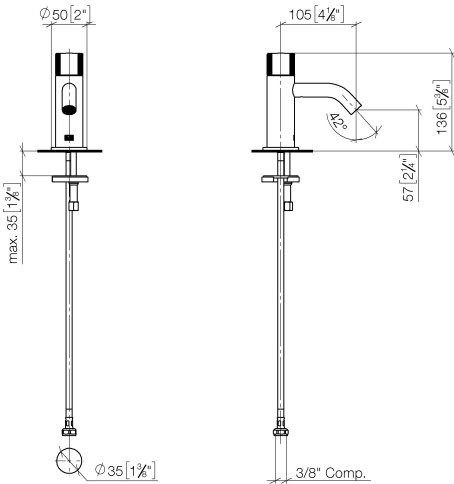
17 500 660
Product version from 10/1/2023




- 105mm projection
- fixed spout
- circular, air-enriched flow
- height of mixer 136 mm
- height up to aerator 57 mm
- hole diameter 35 mm
- 1/2" connection
- rosette Ø 50 mm
- 2 x pressure hose with 3/8" cap nut
- max. flow 4.5 l/min
- lead-free
- This product can help a building meet the requirements of Green Building Rating Systems, e.g. LEED®, BREEAM®, DGNB

	Brushed Chrome	17 500 660-93 0010
	Chrome	17 500 660-00 0010
	Brushed Platinum	17 500 660-06 0010
	Dark Chrome	17 500 660-19 0010
	Light Gold	17 500 660-26 0010
	Brushed Light Gold	17 500 660-27 0010
	Matte Black	17 500 660-33 0010
	Brushed Bronze	17 500 660-42 0010
	Brushed Champagne (22kt Gold)	17 500 660-46 0010
	Champagne (22kt Gold)	17 500 660-47 0010
	Brushed Dark Platinum	17 500 660-99 0010

mm [inches]



Codes & Standards			
ASME A112.18.1	California Energy Commission (CEC)	cUPC	EPA WaterSense
NSF372	NSF61	WaterSense	

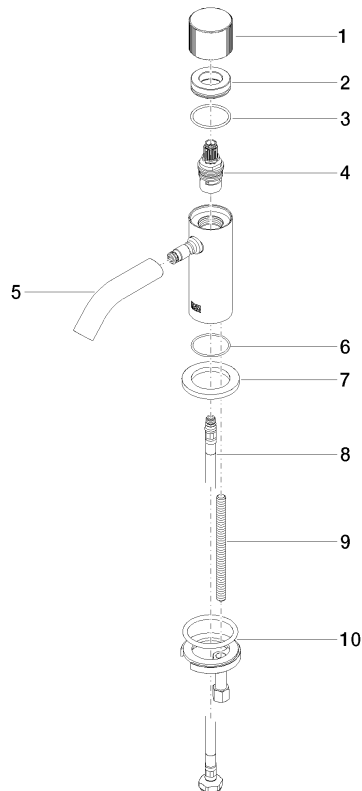
Certificates and sustainability			
IAPMO_N-4	IAPMO_8834	IAPMO_4976	IAPMO_6

## META Pillar tap cold water - Brushed Chrome

META

17 500 660 Product version from 10/1/2023

Parts for other  
finishes can be found  
here: [Chrome](#)



### Spare parts list

No.	Item Number	Name	Quantity used	Delivery time
	2 09 21 02 307-93	cover	1.00	20
	9 09 31 11 012 90	pin	1.00	2
	6 09 14 10 202 90	seal	1.00	2
	1 09 20 66 012-93	handle	1.00	20
	8 04 30 04 102 00 90	High pressure hose 3/8" -	1.00	2
	7 09 27 66 006-93	rosette	1.00	20
	5 90 11 06 212 01-93	spout	1.00	-
Spare part can no longer be ordered, please order the replacement item				
	3 09 14 10 040 90	seal	1.00	2
	10 04 30 11 038 00 90	fixing set	1.00	2
	4 90 90 03 135 00 90	top	1.00	2