

## META Pillar tap cold water - Brushed Chrome

META

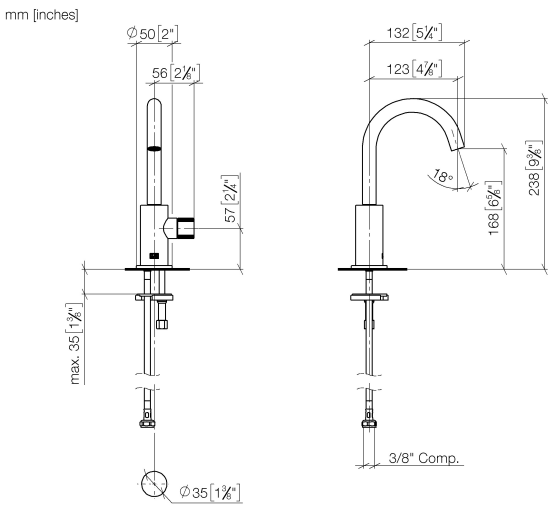
17 500 661 Product version from 7/1/2023



- 123mm projection
- pivotable spout 360°
- circular, air-enriched flow
- height of mixer 238 mm
- height up to aerator 168 mm
- hole diameter 35 mm
- 2 x pressure hose with 3/8" cap nut
- rosette Ø 50 mm
- max. flow 4.5 l/min
- lead-free
- This product can help a building meet the requirements of Green Building Rating Systems, e.g. LEED®, BREEAM®, DGNB

	Brushed Chrome	17 500 661-93 0010
	Chrome	17 500 661-00 0010
	Brushed Platinum	17 500 661-06 0010
	Dark Chrome	17 500 661-19 0010
	Light Gold	17 500 661-26 0010
	Brushed Light Gold	17 500 661-27 0010
	Matte Black	17 500 661-33 0010
	Brushed Dark Brass	17 500 661-39 0010
	Brushed Bronze	17 500 661-42 0010
	Brushed Champagne (22kt Gold)	17 500 661-46 0010
	Champagne (22kt Gold)	17 500 661-47 0010
	Brushed Dark Platinum	17 500 661-99 0010

17 500 661 Product version from 7/1/2023



### Codes & Standards

ASME A112.18.1	California Energy Commission (CEC)	cUPC	EPA WaterSense
NSF372	NSF61	WaterSense	



### Certificates and sustainability

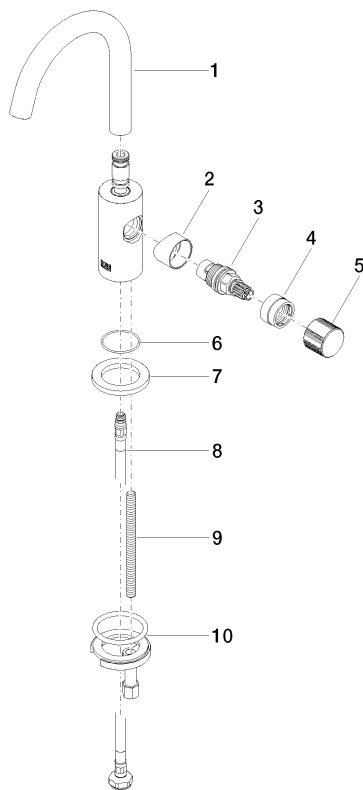
IAPMO_N-4	IAPMO_8834	IAPMO_4976	IAPMO_6
-----------	------------	------------	---------

# META Pillar tap cold water - Brushed Chrome

META

17 500 661 Product version from 7/1/2023

Parts for other  
finishes can be found  
here: [Chrome](#)



## Spare parts list

No.	Item Number	Name	Quantity used	Delivery time
2	09 18 20 221-93	base	1.00	-
Spare part can no longer be ordered, please order the replacement item				
5	09 20 66 013-93	handle	1.00	20
9	09 31 11 012 90	pin	1.00	2
6	09 14 10 202 90	seal	1.00	2
4	09 24 04 533-93	nut	1.00	60
1	90 28 22 312 01-93	spout	1.00	-
Spare part can no longer be ordered, please order the replacement item				
10	04 30 11 038 00 90	fixing set	1.00	2
8	04 30 04 102 00 90	High pressure hose 3/8" -	1.00	2
7	09 27 66 006-93	rosette	1.00	20
3	90 90 03 131 01 90	top	1.00	2