

## VAIA HOT & COLD WATER DISPENSER - Brushed Bronze

17 871 809 Product version from 3/1/2025



- 150mm projection
- pivotable spout 360°
- laminar flow
- height of mixer 290 mm
- height up to laminar flow regulator 208 mm
- hole diameter 35 mm
- provides filtered, hot water up to 93°C
- Provides filtered water
- max. flow 3.8 l/min at 3 bar flow pressure
- mechanical valve
- lead-free
- lever
- This product can help a building meet the requirements of Green Building Rating Systems, e.g. LEED®, BREEAM®, DGNB

NOTE: Not compatible with Reverse Osmosis

A minimum flow pressure of 3 bar is necessary for the HOT & COLD WATER DISPENSER to work perfectly in conjunction with a hot water tank and filter.

Compatible with standard filtration systems or chillers with ¼" compression connection.

The installation must be above a kitchen sink.

The filter cartridge must be changed every six months. The installation instructions contain further information for guidance.

Detailed planning information and technical data can be found at [www.dornbracht.com/professional](http://www.dornbracht.com/professional)

|   |                                |               |
|---|--------------------------------|---------------|
|    | Brushed Bronze                 | 17 871 809-42 |
|    | Chrome                         | 17 871 809-00 |
|    | Brushed Platinum               | 17 871 809-06 |
|    | Platinum                       | 17 871 809-08 |
|    | Durabronze (23kt Gold)         | 17 871 809-09 |
|    | Dark Chrome                    | 17 871 809-19 |
|    | Brushed Durabronze (23kt Gold) | 17 871 809-28 |
|    | Matte Black                    | 17 871 809-33 |
|    | Brushed Champagne (22kt Gold)  | 17 871 809-46 |
|   | Champagne (22kt Gold)          | 17 871 809-47 |
|  | Brushed Chrome                 | 17 871 809-93 |
|  | Brushed Dark Platinum          | 17 871 809-99 |

### Recommended miscellaneous

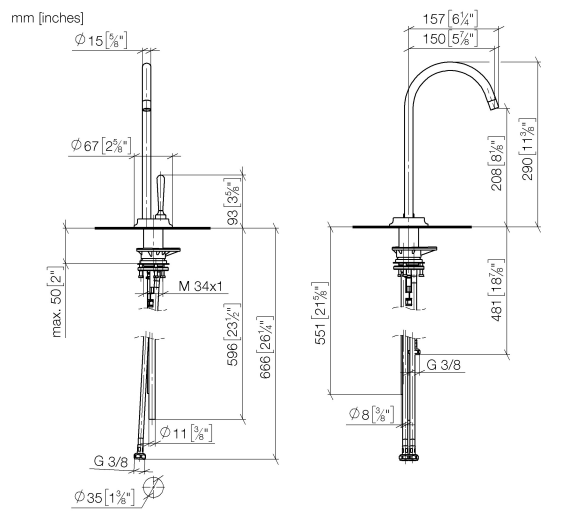
**Adapter**

12 520 970 90

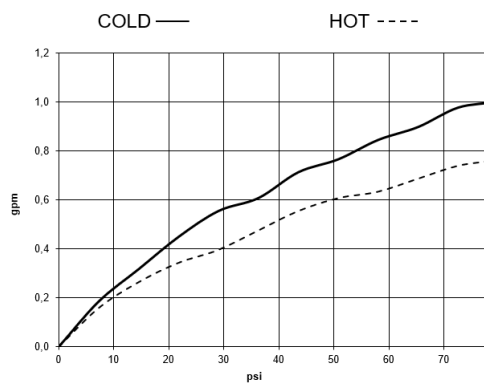


## VAIA HOT & COLD WATER DISPENSER - Brushed Bronze

17 871 809 Product version from 3/1/2025

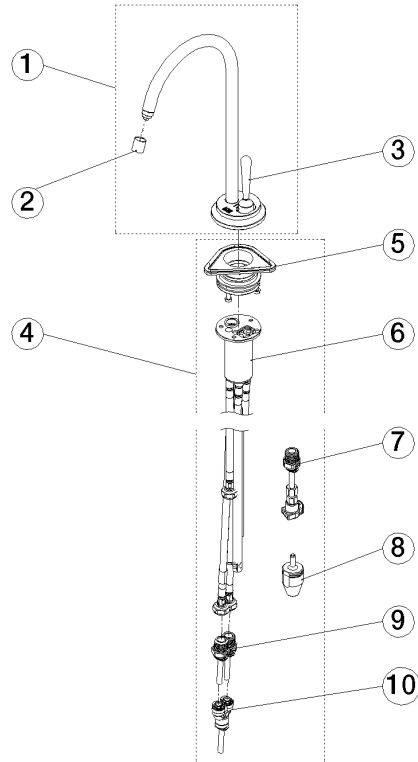


### Flow rate chart



VAIA HOT & COLD WATER DISPENSER - Brushed Bronze

17 871 809 Product version from 3/1/2025



Spare parts list

| No.  | Item Number        | Name  | Quantity used | Delivery time |
|--|--------------------|-------|---------------|---------------|
| 1  | 90 17 87 180 90-42 | spout | 1             | -             |
| Spare part can no longer be ordered, please order the replacement item |                    |       |               |               |
| 2  | 90 17 87 179 00 90 | set   | 1             | -             |
| Spare part can no longer be ordered, please order the replacement item |                    |       |               |               |