

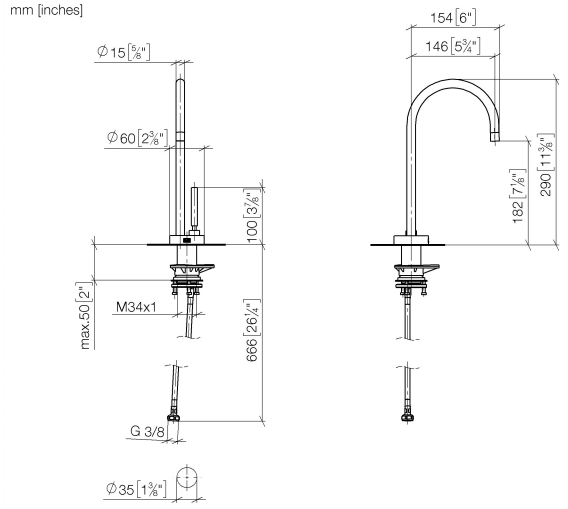


- 146mm projection
 - pivotable spout 360°
 - laminar flow
 - height of mixer 290 mm
 - height up to laminar flow regulator 182 mm
 - hole diameter 35 mm
 - Provides filtered water
 - max. flow 3.8 l/min at 3 bar flow pressure
 - mechanical valve
 - lead-free
 - This product can help a building meet the requirements of Green Building Rating Systems, e.g. LEED®, BREEAM®, DGNB
- Compatible with standard filtration systems or chillers with 1/4" compression connection.
- The filter cartridge must be changed every six months. The installation instructions contain further information for guidance.
- Detailed planning information and technical data can be found at www.dornbracht.com/professional
- NOTE: Not compatible with reverse osmosis
- NOTE: Not compatible with Reverse Osmosis
- Not compatible with reverse osmosis filtration

	Matte Black	17 872 888-33
	Chrome	17 872 888-00
	Brushed Platinum	17 872 888-06
	Platinum	17 872 888-08
	Durabrass (23kt Gold)	17 872 888-09
	Dark Chrome	17 872 888-19
	Brushed Durabrass (23kt Gold)	17 872 888-28
	Brushed Bronze	17 872 888-42
	Brushed Champagne (22kt Gold)	17 872 888-46
	Champagne (22kt Gold)	17 872 888-47
	Brushed Chrome	17 872 888-93
	Brushed Dark Platinum	17 872 888-99

17 872 888 Product version from 3/1/2025

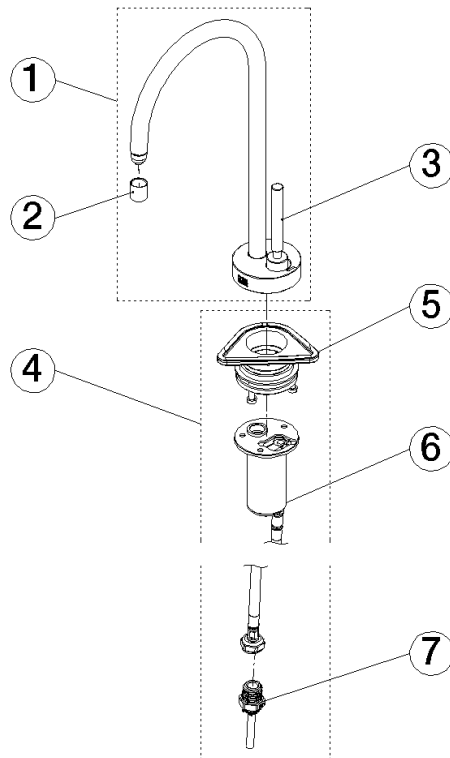
mm [inches]



Codes & Standards

ADA

Parts for other
finishes can be found
here: [Chrome](#)



Spare parts list

No.	Item Number	Name	Quantity used	Delivery time
1	90 17 87 288 80-33	spout	1.00	30
5	90 30 10 057 00 90	fixing set	1.00	2
3	90 20 87 022 00-33	handle	1.00	30
6	90 30 01 221 00 90	hose	1.00	2
4	90 17 87 287 51 90	set	1.00	2
2	90 18 40 163 01-33	aerator	1.00	20
7	90 24 04 293 02 90	adaptor	1.00	2