

VAIA Three-hole bridge mixer Pull-down with spray function - Chrome

VAIA

19 875 809 Product version from 7/1/2023



- 240mm projection
- pivotable spout 360°
- Optional swivel limiter available with swivel limiter set 12 823 970 90
- air-enriched flow and spray flow
- height of mixer 393 mm
- height up to laminar flow regulator 204 mm
- hole diameter 35 mm
- 2 x pressure hose with 3/8" cap nut
- 1800 mm metal shower hose
- sprayface with anti-scaling system
- max. flow 5.7 l/min at 3 bar flow pressure
- lead-free
- Flow modes can be changed while the water is running
- This product can help a building meet the requirements of Green Building Rating Systems, e.g. LEED®, BREEAM®, DGNB

Intrinsic protection against back flow.

Switch back and forth between aerator and spray mode while water is running.

| | | |
|--|--------------------------------|--------------------|
| | Chrome | 19 875 809-00 0010 |
| | Brushed Platinum | 19 875 809-06 0010 |
| | Platinum | 19 875 809-08 0010 |
| | Durabronze (23kt Gold) | 19 875 809-09 0010 |
| | Dark Chrome | 19 875 809-19 0010 |
| | Brushed Durabronze (23kt Gold) | 19 875 809-28 0010 |
| | Matte Black | 19 875 809-33 0010 |
| | Brushed Bronze | 19 875 809-42 0010 |
| | Brushed Champagne (22kt Gold) | 19 875 809-46 0010 |
| | Champagne (22kt Gold) | 19 875 809-47 0010 |
| | Brushed Chrome | 19 875 809-93 0010 |
| | Brushed Dark Platinum | 19 875 809-99 0010 |

Recommended miscellaneous

Swivel limitation set -

12 823 970 90



Recommended miscellaneous

VAIA AIR SWITCH Control button - Chrome



Recommended miscellaneous

Swivel limitation set -

12 823 970 90



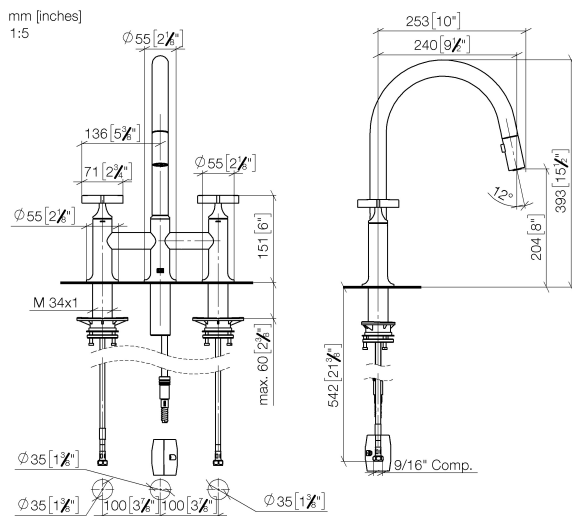
Recommended miscellaneous

VAIA Dispenser with rosette - Chrome

82 434 809-00



19 875 809 Product version from 7/1/2023

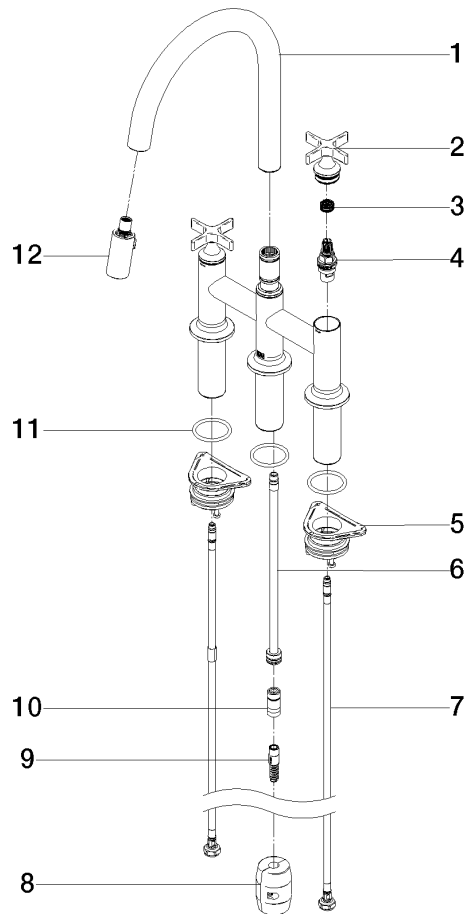


Codes & Standards

| | | | |
|--------|----------------|--|------|
| ADA | ASME A112.18.1 | California Energy Commission (CEC) | cUPC |
| NSF372 | NSF61 | | |

Certificates and sustainability

| | | |
|------------|--------------|------------|
| IAPMO_4976 | IAPMO_N-4976 | IAPMO_6397 |
|------------|--------------|------------|



Spare parts list

| No. | Item Number | Name | Quantity used | Delivery time |
|-----|--------------------|-------------|---------------|---------------|
| 5 | 04 30 11 040 00 90 | fixing set | 2.00 | 2 |
| 2 | 90 20 80 036 00-00 | handle | 2.00 | 10 |
| 8 | 04 21 50 010 00 90 | accessories | 1.00 | 2 |
| 6 | 04 28 20 067 00 90 | pipe | 1.00 | 2 |
| 3 | 90 12 12 232 00 90 | fixing cap | 2.00 | 2 |
| 4 | 90 90 03 131 00 90 | top | 2.00 | 2 |
| 1 | 90 28 22 397 00-00 | spout | 1.00 | 10 |
| 7 | 04 30 04 103 00 90 | hose | 2.00 | 2 |
| 10 | 90 24 03 253 01 90 | adaptor | 1.00 | 2 |
| 9 | 04 30 02 120 00-00 | hose | 1.00 | 10 |
| 12 | 90 18 40 317 00-00 | shower | 1.00 | 10 |
| 11 | 90 14 10 043 00 90 | seal | 3.00 | 2 |