

## VAIA Three-hole bridge mixer Pull-down with spray function - Matte Black

19 875 809 Product version from 7/1/2023



- 240mm projection
- pivotable spout 360°
- Optional swivel limiter available with swivel limiter set 12 823 970 90
- air-enriched flow and spray flow
- height of mixer 393 mm
- height up to laminar flow regulator 204 mm
- hole diameter 35 mm
- 2 x pressure hose with 3/8" cap nut
- 1800 mm metal shower hose
- sprayface with anti-scaling system
- max. flow 5.7 l/min at 3 bar flow pressure
- lead-free
- Flow modes can be changed while the water is running
- This product can help a building meet the requirements of Green Building Rating Systems, e.g. LEED®, BREEAM®, DGNB

Intrinsic protection against back flow.

Switch back and forth between aerator and spray mode while water is running.

|  |                                |                    |
|--|--------------------------------|--------------------|
|  | Matte Black                    | 19 875 809-33 0010 |
|  | Chrome                         | 19 875 809-00 0010 |
|  | Brushed Platinum               | 19 875 809-06 0010 |
|  | Platinum                       | 19 875 809-08 0010 |
|  | Durabronze (23kt Gold)         | 19 875 809-09 0010 |
|  | Dark Chrome                    | 19 875 809-19 0010 |
|  | Brushed Durabronze (23kt Gold) | 19 875 809-28 0010 |
|  | Brushed Bronze                 | 19 875 809-42 0010 |
|  | Brushed Champagne (22kt Gold)  | 19 875 809-46 0010 |
|  | Champagne (22kt Gold)          | 19 875 809-47 0010 |
|  | Brushed Chrome                 | 19 875 809-93 0010 |
|  | Brushed Dark Platinum          | 19 875 809-99 0010 |

### Recommended miscellaneous

|  |                                |               |
|--|--------------------------------|---------------|
|  | <b>Swivel limitation set -</b> | 12 823 970 90 |
|--|--------------------------------|---------------|

### Recommended miscellaneous

|  |  |               |
|--|--|---------------|
|  | <b>VAIA Dispenser with rosette - Matte Black</b> | 82 434 809-33 |
|--|--|---------------|

### Recommended miscellaneous

|  |                                |               |
|--|--------------------------------|---------------|
|  | <b>Swivel limitation set -</b> | 12 823 970 90 |
|--|--------------------------------|---------------|

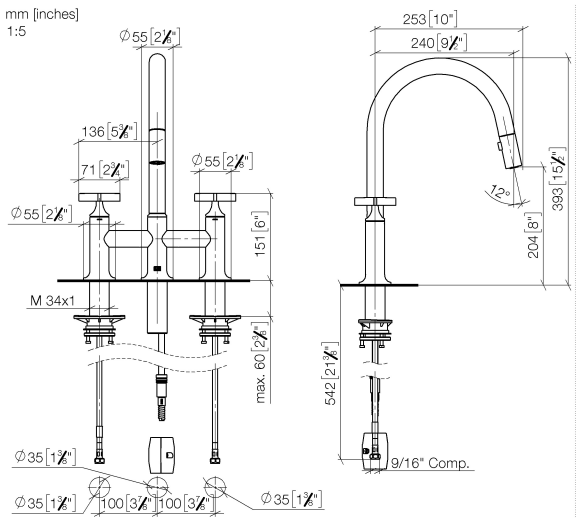
### Recommended miscellaneous

|  |   |               |
|--|---|---------------|
|  | <b>VAIA AIR SWITCH Control button - Matte Black</b> | 10 713 809-33 |
|--|---|---------------|



VAIA Three-hole bridge mixer Pull-down with spray function - Matte Black

19 875 809    Product version from 7/1/2023



Flow rate chart



Codes & Standards

|                |                                    |      |        |
|----------------|------------------------------------|------|--------|
| ASME A112.18.1 | California Energy Commission (CEC) | cUPC | NSF372 |
| NSF61          |                                    |      |        |



## VAIA Three-hole bridge mixer Pull-down with spray function - Matte Black

---

19 875 809 Product version from 7/1/2023

### Certificates

---

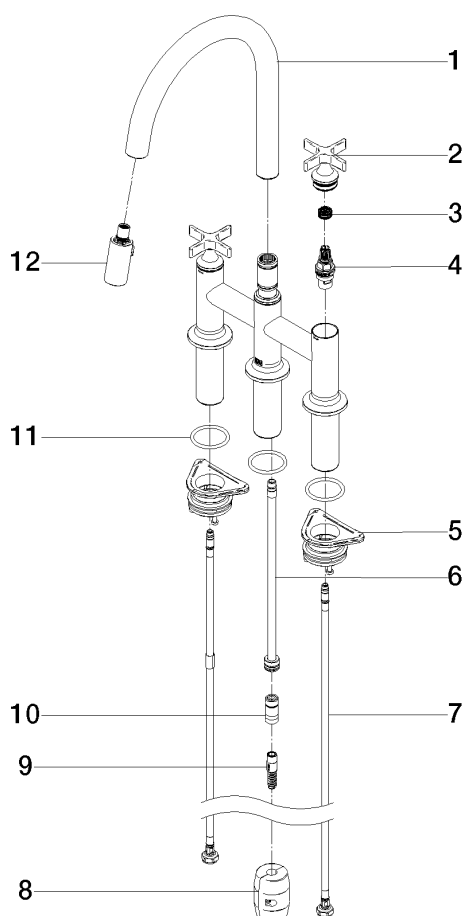
IAPMO\_4976

IAPMO\_N-4976

IAPMO\_6397

## VAIA Three-hole bridge mixer Pull-down with spray function - Matte Black

19 875 809 Product version from 7/1/2023



### Spare parts list

| No.  | Item Number        | Name        | Quantity used | Delivery time |
|--|--------------------|-------------|---------------|---------------|
| 1  | 90 28 22 397 00-33 | spout       | 1             | 30            |
| 2  | 90 20 80 036 00-33 | handle      | 2             | -             |
| Spare part can no longer be ordered, please order the replacement item |                    |             |               |               |
| 3  | 90 12 12 232 00 90 | fixing cap  | 2             | 2             |
| 4  | 90 90 03 131 00 90 | top         | 2             | 2             |
| 5  | 04 30 11 040 00 90 | fixing set  | 2             | 2             |
| 6  | 04 28 20 067 00 90 | pipe        | 1             | 2             |
| 7  | 04 30 04 103 00 90 | hose        | 2             | 2             |
| 8  | 04 21 50 010 00 90 | accessories | 1             | 2             |
| 9  | 04 30 02 120 00-33 | hose        | 1             | -             |
| Spare part can no longer be ordered, please order the replacement item |                    |             |               |               |
| 10   | 90 24 03 253 01 90 | adaptor     | 1             | 2             |
| 11   | 09 14 10 019 90    | seal        | 1             | 2             |
| 12   | 90 18 40 317 00-33 | shower      | 1             | 30            |