

VAIA Three-hole bridge mixer Pull-down with spray function - Brushed Dark Platinum

VAIA

19 875 809 Product version from 7/1/2023



- 240mm projection
- pivotable spout 360°
- Optional swivel limiter available with swivel limiter set 12 823 970 90
- air-enriched flow and spray flow
- height of mixer 393 mm
- height up to laminar flow regulator 204 mm
- hole diameter 35 mm
- 2 x pressure hose with 3/8" cap nut
- 1800 mm metal shower hose
- sprayface with anti-scaling system
- max. flow 5.7 l/min at 3 bar flow pressure
- lead-free
- Flow modes can be changed while the water is running
- This product can help a building meet the requirements of Green Building Rating Systems, e.g. LEED®, BREEAM®, DGNB

Intrinsic protection against back flow.

Switch back and forth between aerator and spray mode while water is running.

	Brushed Dark Platinum	19 875 809-99 0010
	Chrome	19 875 809-00 0010
	Brushed Platinum	19 875 809-06 0010
	Platinum	19 875 809-08 0010
	Durabronze (23kt Gold)	19 875 809-09 0010
	Dark Chrome	19 875 809-19 0010
	Brushed Durabronze (23kt Gold)	19 875 809-28 0010
	Matte Black	19 875 809-33 0010
	Brushed Bronze	19 875 809-42 0010
	Brushed Champagne (22kt Gold)	19 875 809-46 0010
	Champagne (22kt Gold)	19 875 809-47 0010
	Brushed Chrome	19 875 809-93 0010

Recommended miscellaneous

Swivel limitation set -

12 823 970 90



Recommended miscellaneous

VAIA AIR SWITCH Control button - 10 713 809-99
Brushed Dark Platinum



Recommended miscellaneous

Swivel limitation set -

12 823 970 90



Recommended miscellaneous

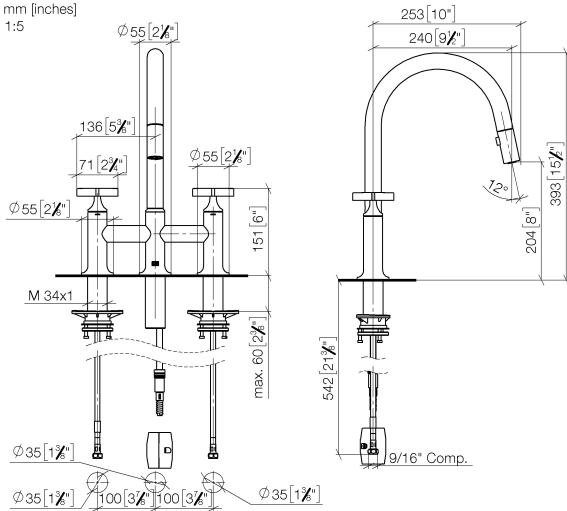
VAIA Dispenser with rosette - 82 434 809-99
Brushed Dark Platinum



19 875 809 Product version from 7/1/2023

mm [inches]
4.5

1:5

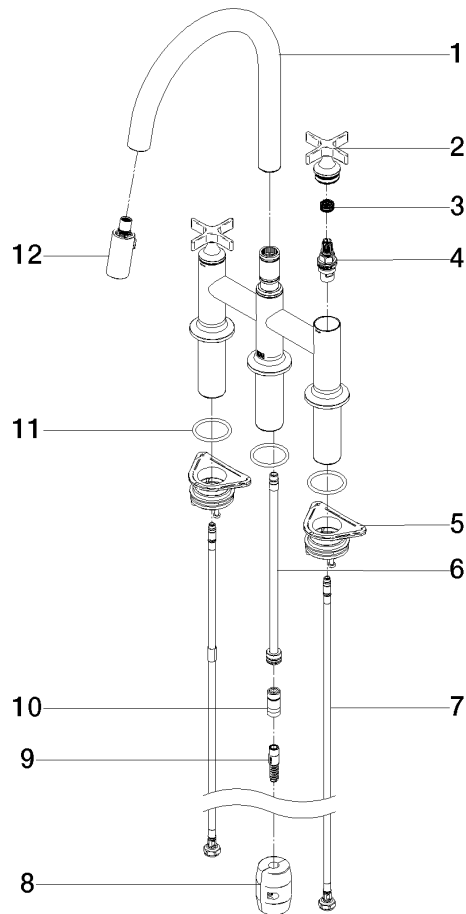


Codes & Standards

ADA	ASME A112.18.1	California Energy Commission (CEC)	cUPC
NSF372	NSF61		

Certificates and sustainability

IAPMO_4976 IAPMO_N-4976 IAPMO_6397



Spare parts list

No.	Item Number	Name	Quantity used	Delivery time
7	04 30 04 103 00 90	hose	2.00	2
1	90 28 22 397 00-99	spout	1.00	20
3	90 12 12 232 00 90	fixing cap	2.00	2
10	90 24 03 253 01 90	adaptor	1.00	2
2	90 20 80 036 00-99	handle	2.00	20
4	90 90 03 131 00 90	top	2.00	2
6	04 28 20 067 00 90	pipe	1.00	2
5	04 30 11 040 00 90	fixing set	2.00	2
8	04 21 50 010 00 90	accessories	1.00	2
9	04 30 02 120 00-99	hose	1.00	-
Spare part can no longer be ordered, please order the replacement item				
12	90 18 40 317 00-99	shower	1.00	20
11	90 14 10 043 00 90	seal	3.00	2