

MADISON Three-hole basin mixer with pop-up waste - Durabrand (23kt Gold)



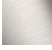
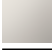


MADISON

20 700 360 Product version from 7/31/2009



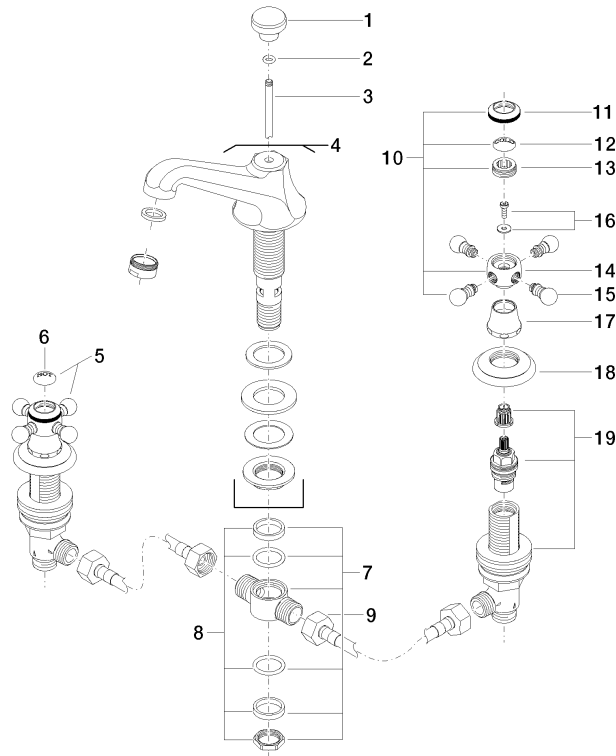
- 135mm projection
- 1 1/4" pop-up waste
- fixed spout
- circular, air-enriched flow
- height of mixer 72 mm
- height up to aerator 40 mm
- hole diameter valve 32 mm
- hole diameter spout 35 mm
- without rosette
- 2x 1/2" x 1/2" high pressure hose
- max. flow 4.5 l/min
- lead-free
- This product can help a building meet the requirements of Green Building Rating Systems, e.g. LEED®, BREEAM®, DGNB

Only suitable for basins with an overflow.

	Durabrand (23kt Gold)	20 700 360-09 0010
	Chrome	20 700 360-00 0010
	Brushed Platinum	20 700 360-06 0010
	Platinum	20 700 360-08 0010
	Brushed Durabrand (23kt Gold)	20 700 360-28 0010
	Brushed Dark Platinum	20 700 360-99 0010

20 700 360 Product version from 7/31/2009

Parts for other
finishes can be found
here: Chrome



20 ————— Ablaufgarnitur 04.11.01.001.00.FP



MADISON Three-hole basin mixer with pop-up waste - Durabron (23kt Gold)

MADISON

20 700 360 Product version from 7/31/2009

Spare parts list

No.	Item Number	Name	Quantity used	Delivery time
17	09 21 02 055-09	cover	2.00	40
3	09 31 09 004-09	pull-rod	1.00	40
11	09 20 36 005-09	handle	2.00	40
19	90 17 11 040 51 90	side panel	2.00	2
9	04 30 04 096 00 90	hose	2.00	2
6	09 26 01 011 90	accessories	1.00	2
13	09 20 83 006 90	handle	2.00	2
18	09 27 35 001-09	rosette	2.00	40
10	04 20 36 002 06-09	handle (cold)	1.00	40
12	09 26 01 010 90	accessories	1.00	2
4	13 700 380-09 0010	spout	1.00	-
Spare part can no longer be ordered, please order the replacement item				
1	09 20 36 030-09	handle	1.00	40
14	09 20 36 002-09	handle	2.00	40
5	04 20 36 002 07-09	handle (hot)	1.00	40
8	90 23 10 012 00 90	gasket kit	1.00	2
15	09 20 36 004-09	handle	8.00	40
16	04 30 30 029 00 90	fixing set	2.00	2
2	90 14 10 062 00 90	seal	1.00	2
7	90 17 11 020 10 90	distributor	1.00	2
20	90 11 01 023 00-09	pop-up waste	1.00	40