

## VAIA Three-hole basin mixer with pop-up waste - Champagne (22kt Gold)

VAIA

20 705 819



- 165mm projection
- 1 1/4" pop-up waste
- pivotable spout 360°
- circular, air-enriched flow
- height of mixer 144 mm
- height up to aerator 90 mm
- hole diameter valve 32 mm
- hole diameter spout 35 mm
- rosette Ø 60 mm
- max. flow 4.5 l/min
- lead-free
- This product can help a building meet the requirements of Green Building Rating Systems, e.g. LEED®, BREEAM®, DGNB

Only suitable for basins with an overflow.

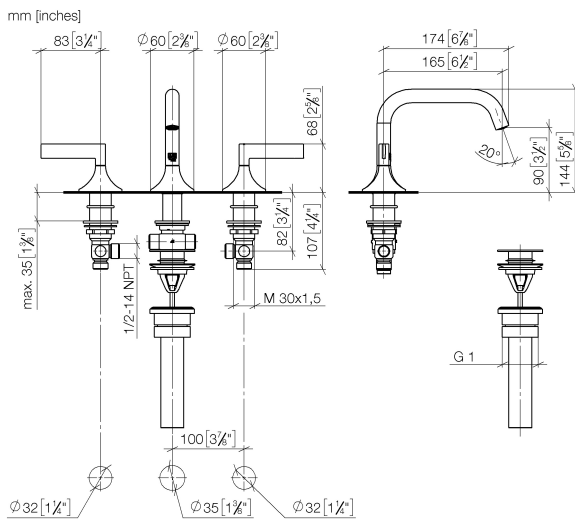
	Champagne (22kt Gold)	20 705 819-47 0010
	Chrome	20 705 819-00 0010
	Brushed Platinum	20 705 819-06 0010
	Platinum	20 705 819-08 0010
	Brushed Durabronze (23kt Gold)	20 705 819-28 0010
	Brushed Bronze	20 705 819-42 0010
	Brushed Champagne (22kt Gold)	20 705 819-46 0010
	Brushed Dark Platinum	20 705 819-99 0010



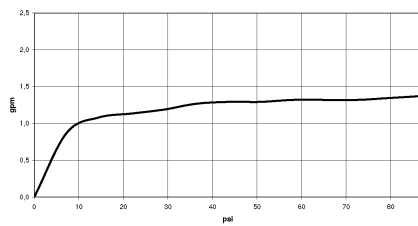
## VAIA Three-hole basin mixer with pop-up waste - Champagne (22kt Gold)

VAIA

20 705 819



### Flow rate chart

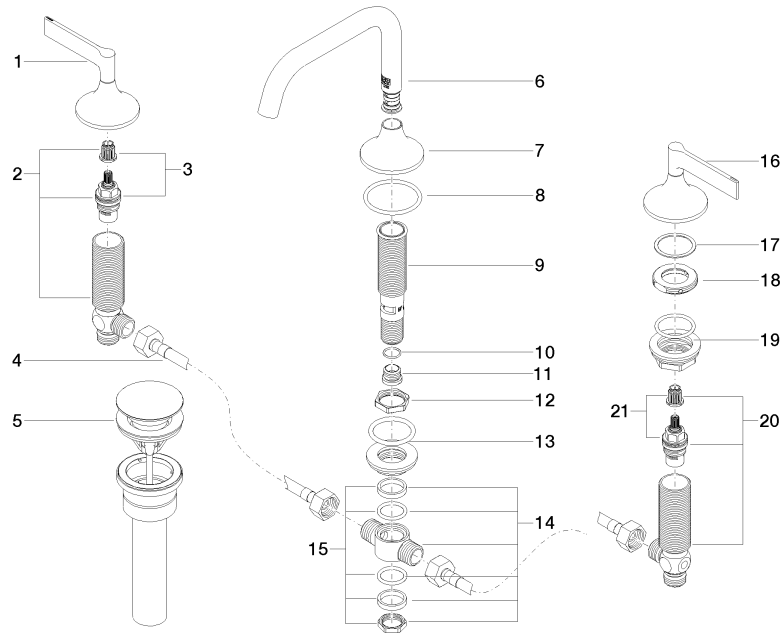


### Codes & Standards

California Energy  
Commission  
(CEC)

20 705 819

Parts for other  
finishes can be found  
here: [Chrome](#)





## VAIA Three-hole basin mixer with pop-up waste - Champagne (22kt Gold)

VAIA

20 705 819

### Spare parts list

No.	Item Number	Name	Quantity used	Delivery time
	90 20 80 013 00-47	handle ( hot )	25	30