

## CYO Three-hole basin mixer with pop-up waste without design element - Brushed Platinum








CYO

20 710 811



- 133mm projection
- 1 1/4" pop-up waste
- fixed spout
- rectangular, air-enriched flow
- height of mixer 180 mm
- height up to aerator 128 mm
- hole diameter spout 35 mm
- hole diameter valve 32 mm
- handle Ø 60mm
- max. flow 4.5 l/min
- lead-free
- This product can help a building meet the requirements of Green Building Rating Systems, e.g. LEED®, BREEAM®, DGNB

NOTE: The handle inserts must be ordered separately from the fittings!

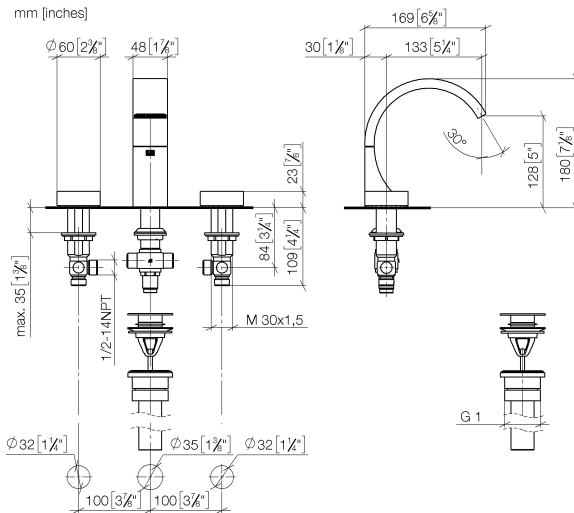
	Brushed Platinum	20 710 811-06 0010
	Chrome	20 710 811-00 0010
	Dark Chrome	20 710 811-19 0010
	Brushed Durabronze (23kt Gold)	20 710 811-28 0010
	Platinum / Brushed Platinum	20 710 811-36 0010
	Durabronze / Brushed Durabronze (23kt Gold)	20 710 811-38 0010
	Brushed Dark Platinum	20 710 811-99 0010

## CYO Three-hole basin mixer with pop-up waste without design element - Brushed Platinum

CYO

20 710 811

mm [inches]



### Codes & Standards

ASME A112.18.1	California Energy Commission (CEC)	cUPC	EPA WaterSense
NSF372	NSF61	WaterSense	



### Certificates and sustainability

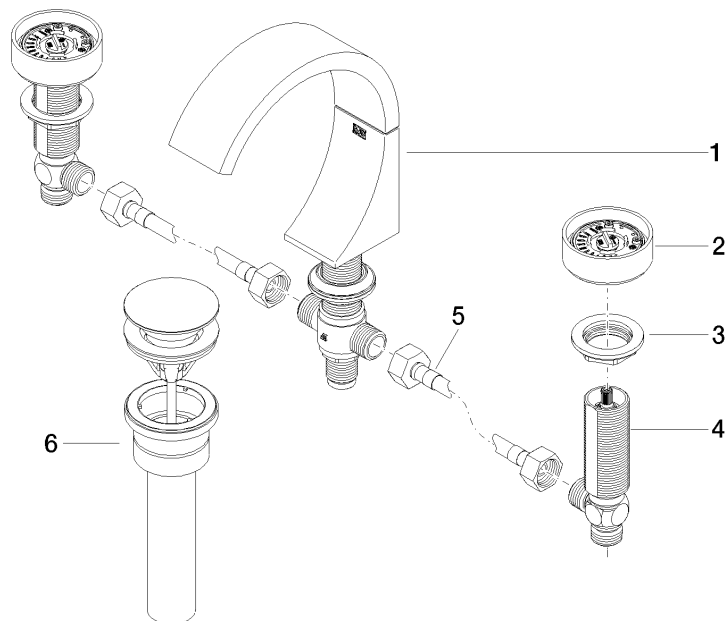
IAPMO_N-4	IAPMO_8834	IAPMO_4976	IAPMO_6
-----------	------------	------------	---------

## CYO Three-hole basin mixer with pop-up waste without design element - Brushed Platinum

CYO

20 710 811

Parts for other  
finishes can be found  
here: [Chrome](#)



### Spare parts list

No.	Item Number	Name	Quantity used	Delivery time
1	13 715 811-06	CYO Deck-mounted basin spout without pop-up waste - Brushed Platinum	1.00	10
6	10 125 970-06 0010	Basin Waste 1 1/4" - Brushed Platinum	1.00	2
4	04 17 11 055 61 90	side panel	2.00	2
2	90 18 40 290 00-06	handle	2.00	10
5	04 30 04 096 00 90	hose	2.00	2
3	04 30 11 038 67 90	fixing set	2.00	2