

## TARA Single-hole basin mixer with pop-up waste - Brushed Platinum

TARA

22 513 892 Product version from 6/30/2009 to 5/27/2021



- 165mm projection
- 1 1/4" pop-up waste
- pivotable spout 360°
- circular, air-enriched flow
- height of mixer 295 mm
- height up to aerator 172 mm
- hole diameter 35 mm
- rosette Ø 59 mm
- 2 x pressure hose with 3/8" cap nut
- max. flow 4.5 l/min
- lead-free
- This product can help a building meet the requirements of Green Building Rating Systems, e.g. LEED®, BREEAM®, DGNB

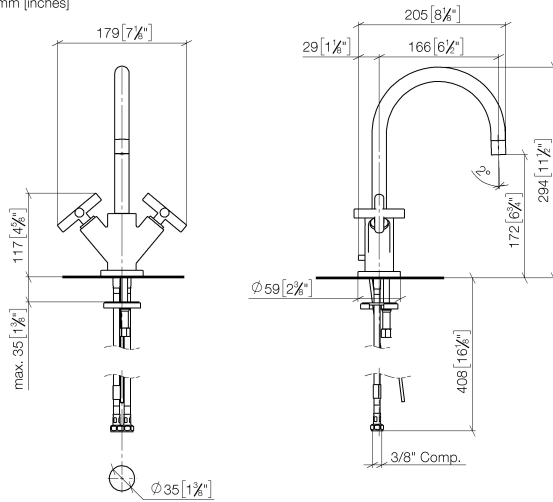
	Brushed Platinum	22 513 892-06 0010
	Chrome	22 513 892-00 0010
	Platinum	22 513 892-08 0010
	Dark Chrome	22 513 892-19 0010
	Brushed Durabronze (23kt Gold)	22 513 892-28 0010
	Matte Black	22 513 892-33 0010
	Brushed Dark Brass	22 513 892-39 0010
	Brushed Bronze	22 513 892-42 0010
	Brushed Champagne (22kt Gold)	22 513 892-46 0010
	Champagne (22kt Gold)	22 513 892-47 0010
	Brushed Chrome	22 513 892-93 0010
	Brushed Dark Platinum	22 513 892-99 0010

## TARA Single-hole basin mixer with pop-up waste - Brushed Platinum

TARA

22 513 892 Product version from 6/30/2009 to 5/27/2021

mm [inches]



### Codes & Standards

ADA	ASME A112.18.1	California Energy Commission (CEC)	cUPC
EPA WaterSense	NSF372	NSF61	WaterSense



### Certificates and sustainability

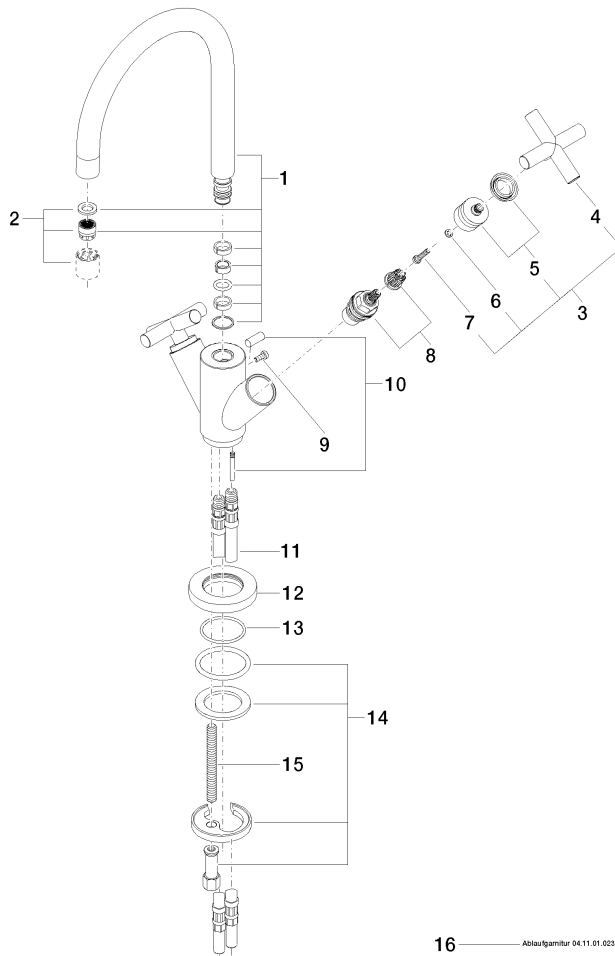
IAPMO_4976	IAPMO_8834	IAPMO_N-4	IAPMO_6
------------	------------	-----------	---------

# TARA Single-hole basin mixer with pop-up waste - Brushed Platinum

TARA

22 513 892 Product version from 6/30/2009 to 5/27/2021

Parts for other finishes can be found here: [Chrome](#)



16 Abbaufamilie 04.11.01.023.00-ff

## Spare parts list

No.	Item Number	Name	Quantity used	Delivery time
	12 09 28 10 132-06	ring	1.00	10
	10 04 20 89 035 80-06	pull-rod	1.00	10
	8 90 90 03 151 00 90	top	2.00	2
	15 09 31 11 011 90	pin	1.00	2
	5 90 12 12 007 00-06	base	2.00	10
	2 90 23 01 028 04-06	aerator	1.00	10
	11 04 30 04 045 00 90	hose	2.00	2
	9 09 30 30 054 90	screw	1.00	2
	14 04 30 11 038 00 90	fixing set	1.00	2
	4 09 20 89 010-06	handle	2.00	60
	13 09 14 10 134 90	seal	1.00	2
	1 90 28 22 213 02-06	spout	1.00	10
	6 90 30 11 029 00 90	disc	2.00	2
	16 90 11 01 023 00-06	pop-up waste	1.00	10
	3 90 20 89 010 10-06	handle	2.00	10
	7 90 30 30 075 00 90	screw	2.00	2