

TARA Single-hole basin mixer with pop-up waste - Brushed Chrome

TARA

22 513 892 Product version from 6/30/2009 to 5/27/2021



- 165mm projection
- 1 1/4" pop-up waste
- pivotable spout 360°
- circular, air-enriched flow
- height of mixer 295 mm
- height up to aerator 172 mm
- hole diameter 35 mm
- rosette Ø 59 mm
- 2 x pressure hose with 3/8" cap nut
- max. flow 4.5 l/min
- lead-free
- This product can help a building meet the requirements of Green Building Rating Systems, e.g. LEED®, BREEAM®, DGNB

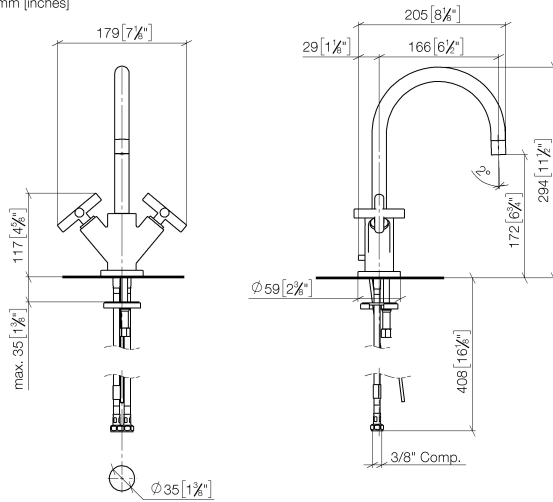
	Brushed Chrome	22 513 892-93 0010
	Chrome	22 513 892-00 0010
	Brushed Platinum	22 513 892-06 0010
	Platinum	22 513 892-08 0010
	Dark Chrome	22 513 892-19 0010
	Brushed Durabronze (23kt Gold)	22 513 892-28 0010
	Matte Black	22 513 892-33 0010
	Brushed Dark Brass	22 513 892-39 0010
	Brushed Bronze	22 513 892-42 0010
	Brushed Champagne (22kt Gold)	22 513 892-46 0010
	Champagne (22kt Gold)	22 513 892-47 0010
	Brushed Dark Platinum	22 513 892-99 0010

TARA Single-hole basin mixer with pop-up waste - Brushed Chrome

TARA

22 513 892 Product version from 6/30/2009 to 5/27/2021

mm [inches]



Codes & Standards

ADA	ASME A112.18.1	California Energy Commission (CEC)	cUPC
EPA WaterSense	NSF372	NSF61	WaterSense



Certificates and sustainability

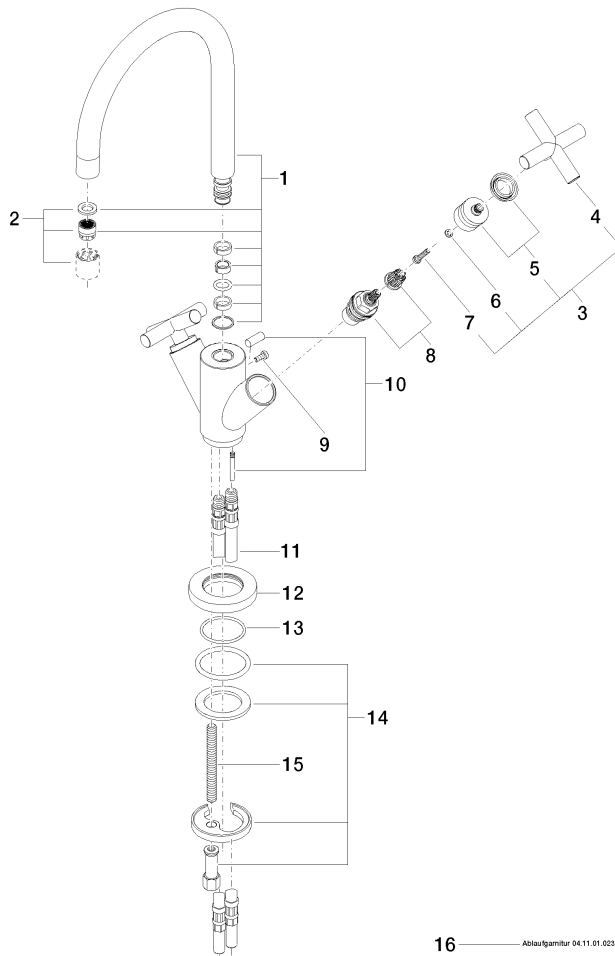
IAPMO_4976	IAPMO_8834	IAPMO_N-4	IAPMO_6
------------	------------	-----------	---------

TARA Single-hole basin mixer with pop-up waste - Brushed Chrome

TARA

22 513 892 Product version from 6/30/2009 to 5/27/2021

Parts for other
finishes can be found
here: [Chrome](#)



Spare parts list

No.	Item Number	Name	Quantity used	Delivery time
1	90 28 22 213 02-93	spout	1.00	-
Spare part can no longer be ordered, please order the replacement item				
4	09 20 89 010-93	handle	2.00	60
10	04 20 89 035 80-93	pull-rod	1.00	20
14	04 30 11 038 00 90	fixing set	1.00	2
5	90 12 12 007 00-93	base	2.00	20
15	09 31 11 011 90	pin	1.00	2
2	90 23 01 028 04-93	aerator	1.00	-
Spare part can no longer be ordered, please order the replacement item				
13	09 14 10 134 90	seal	1.00	2
9	09 30 30 054 90	screw	1.00	2
11	04 30 04 045 00 90	hose	2.00	2
8	90 90 03 151 00 90	top	2.00	2
12	09 28 10 132-93	ring	1.00	20
7	90 30 30 075 00 90	screw	2.00	2
3	90 20 89 010 10-93	handle	2.00	20
6	90 30 11 029 00 90	disc	2.00	2
16	90 11 01 023 00-93	pop-up waste	1.00	20