

IMO Single-hole basin mixer with stand pipe without pop-up waste - Dark Chrome

IMO

22 585 671	Product version from 4/1/2024		
	<ul style="list-style-type: none"> 195mm projection fixed spout rectangular, air-enriched flow total height 1038 - 1103 mm height up to aerator 970 – 1040 mm rosette Ø 135 mm max. flow 4.6 l/min lead-free This product can help a building meet the requirements of Green Building Rating Systems, e.g. LEED®, BREEAM®, DGNB 	<div> <div></div> <div>Dark Chrome</div> <div>22 585 671-19 0010</div> </div> <div> <div></div> <div>Chrome</div> <div>22 585 671-00 0010</div> </div> <div> <div></div> <div>Brushed Platinum</div> <div>22 585 671-06 0010</div> </div> <div> <div></div> <div>Matte Black</div> <div>22 585 671-33 0010</div> </div> <div> <div></div> <div>Brushed Chrome</div> <div>22 585 671-93 0010</div> </div> <div> <div></div> <div>Brushed Dark Platinum</div> <div>22 585 671-99 0010</div> </div>	

Required miscellaneous

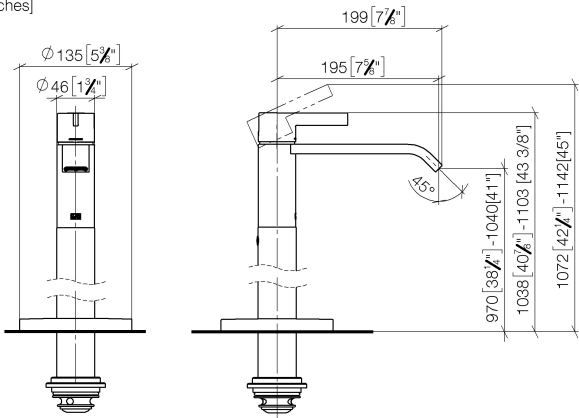
	<div> <div></div> <div>Concealed floor mounting -</div> <div> <ul style="list-style-type: none"> min. recess depth 80 mm max. recess depth 150 mm </div> </div>	35 949 970-90 0010
--	---	--------------------




IMO Single-hole basin mixer with stand pipe without pop-up waste - Dark Chrome

IMO

22 585 671 Product version from 4/1/2024
mm [inches]



Codes & Standards

ADA	ASME A112.18.1	cUPC	EPA WaterSense
NSF372	NSF61	WaterSense	

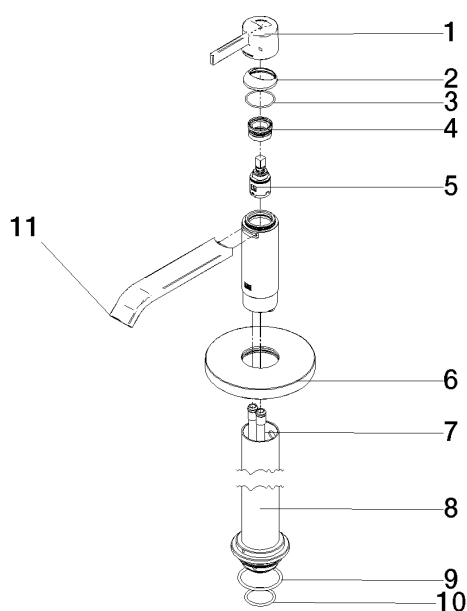
Certificates and sustainability

IAPMO_8834	IAPMO_N-4976	IAPMO_6397	IAPMO_4976 (
------------	--------------	------------	--------------

IMO Single-hole basin mixer with stand pipe without pop-up waste - Dark Chrome

IMO

22 585 671 Product version from 4/1/2024



Spare parts list

No.	Item Number	Name	Quantity used	Delivery time
10	09 14 10 018 90	seal	1.00	2
3	09 14 10 102 90	seal	1.00	2
8	90 28 22 574 00-19	pipe	1.00	20
6	09 27 88 005-19	rosette	1.00	20
7	04 28 22 022 10 90	connection	2.00	2
1	90 20 67 019 00-19	handle	1.00	20
5	90 15 05 042 00 90	cartridge	1.00	2
11	90 28 22 407 00-19	spout	1.00	20
4	90 23 10 146 00 90	nut	1.00	2
2	90 28 30 059 00-19	cover	1.00	-
Spare part can no longer be ordered, please order the replacement item				
9	09 14 10 084 90	seal	1.00	2