



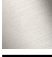



IMO Single-hole basin mixer with stand pipe without pop-up waste - Brushed Chrome

IMO

22 585 671 Product version from 4/1/2024



- 195mm projection
- fixed spout
- rectangular, air-enriched flow
- total height 1038 - 1103 mm
- height up to aerator 970 – 1040 mm
- rosette Ø 135 mm
- max. flow 4.6 l/min
- lead-free
- This product can help a building meet the requirements of Green Building Rating Systems, e.g. LEED®, BREEAM®, DGNB

	Brushed Chrome	22 585 671-93 0010
	Chrome	22 585 671-00 0010
	Brushed Platinum	22 585 671-06 0010
	Dark Chrome	22 585 671-19 0010
	Matte Black	22 585 671-33 0010
	Brushed Dark Platinum	22 585 671-99 0010

Required miscellaneous



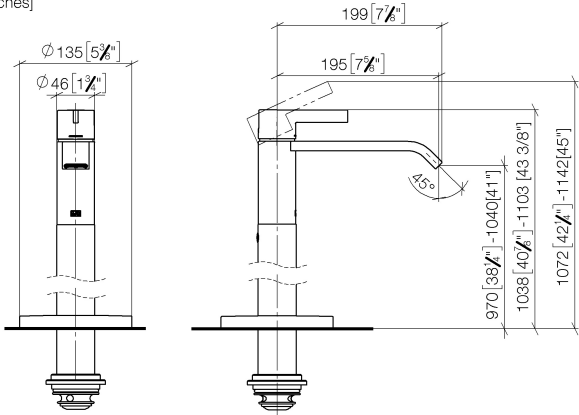
- Concealed floor mounting -** 35 949 970-90
- min. recess depth 80 mm 0010
 - max. recess depth 150 mm



IMO Single-hole basin mixer with stand pipe without pop-up waste - Brushed Chrome

IMO

22 585 671 Product version from 4/1/2024
mm [inches]



Codes & Standards

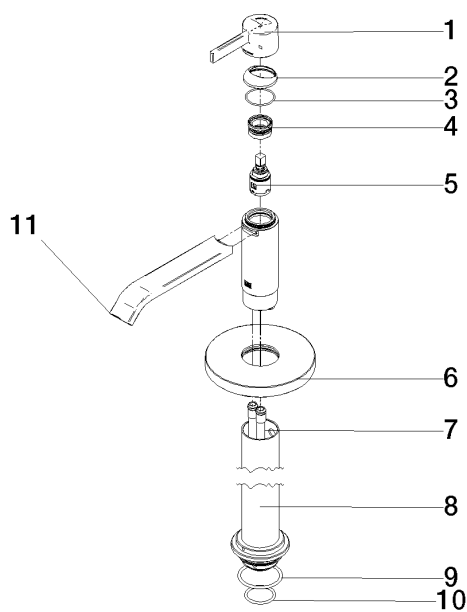
ADA ASME A112.18.1 cUPC EPA WaterSense

NSF372 NSF61 WaterSense



Certificates and sustainability

IAPMO_8834 IAPMO_N-4976 IAPMO_6397 IAPMO_4976 (



Spare parts list

No.	Item Number	Name	Quantity used	Delivery time
11	90 28 22 407 00-93	spout	1.00	20
9	09 14 10 084 90	seal	1.00	2
8	90 28 22 574 00-93	pipe	1.00	20
2	90 28 30 059 00-93	cover	1.00	-
Spare part can no longer be ordered, please order the replacement item				
5	90 15 05 042 00 90	cartridge	1.00	2
3	09 14 10 102 90	seal	1.00	2
6	09 27 88 005-93	rosette	1.00	20
1	90 20 67 019 00-93	handle	1.00	20
10	09 14 10 018 90	seal	1.00	2
7	04 28 22 022 10 90	connection	2.00	2
4	90 23 10 146 00 90	nut	1.00	2