

VAIA Single-hole basin mixer with stand pipe without pop-up waste - Dark Chrome

VAIA

22 585 809 Product version from 4/1/2025



- 202mm projection
- pivotable spout 360°
- circular, air-enriched flow
- total height 1251 - 1321 mm
- height up to aerator 1152 – 1222 mm
- rosette Ø 135 mm
- max. flow 4.5 l/min
- lead-free
- This product can help a building meet the requirements of Green Building Rating Systems, e.g. LEED®, BREEAM®, DGNB

	Dark Chrome	22 585 809-19 0010
	Chrome	22 585 809-00 0010
	Brushed Platinum	22 585 809-06 0010
	Platinum	22 585 809-08 0010
	Brushed Durabronze (23kt Gold)	22 585 809-28 0010
	Brushed Dark Brass	22 585 809-39 0010
	Brushed Bronze	22 585 809-42 0010
	Brushed Champagne (22kt Gold)	22 585 809-46 0010
	Champagne (22kt Gold)	22 585 809-47 0010
	Brushed Dark Platinum	22 585 809-99 0010

Required miscellaneous



- Concealed floor mounting -**
- max. recess depth 150 mm
 - min. recess depth 80 mm

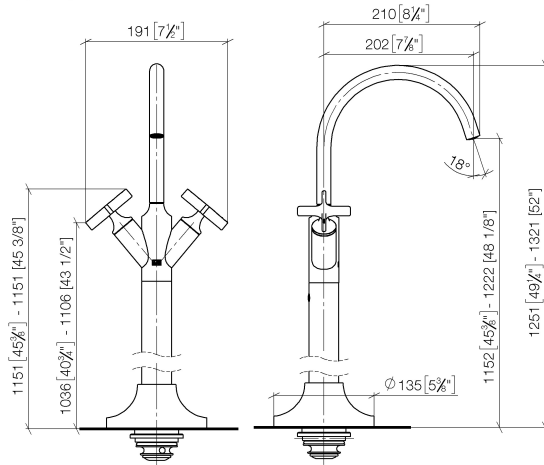
35 949 970-90
0010



VAIA Single-hole basin mixer with stand pipe without pop-up waste - Dark Chrome

VAIA

22 585 809 Product version from 4/1/2025
mm [inches]



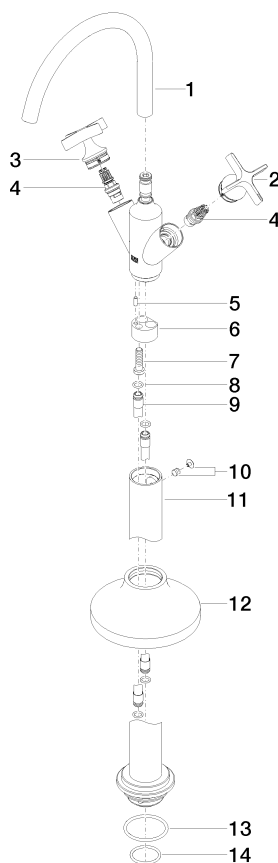
Codes & Standards

ADA	ASME A112.18.1	California Energy Commission (CEC)	cUPC
EPA WaterSense	NSF372	NSF61	WaterSense



Certificates and sustainability

IAPMO_4976	IAPMO_8834	IAPMO_6397	IAPMO_N-4976
------------	------------	------------	--------------



Spare parts list

No.	Item Number	Name	Quantity used	Delivery time
4	90 90 03 175 00 90	top	1.00	2
7	09 30 30 047 90	screw	1.00	2
6	09 24 03 193 90	adaptor	1.00	2
3	90 20 66 029 01-19	handle (hot)	1.00	20
2	90 20 66 028 00-19	handle (cold)	1.00	20
12	90 27 80 033 00-19	rosette	1.00	20
14	09 14 10 018 90	seal	1.00	2
9	04 28 22 022 10 90	connection	2.00	2
8	09 14 10 139 90	seal	4.00	2
13	09 14 10 084 90	seal	1.00	2
11	04 28 22 028 00-19	pipe	1.00	60
5	09 31 11 040 90	pin	1.00	2
10	04 31 11 002 00 90	pin	1.00	2
1	90 28 22 313 01-19	spout	1.00	20