

TARA Single-hole basin mixer with stand pipe without pop-up waste - Brushed Chrome

TARA

22 585 892 Product version from 4/1/2024



- 201mm projection
- pivotable spout 360°
- circular, air-enriched flow
- total height 1095 - 1166 mm
- height up to aerator 1025 – 1095 mm
- rosette Ø 135 mm
- max. flow 4.5 l/min
- lead-free
- This product can help a building meet the requirements of Green Building Rating Systems, e.g. LEED®, BREEAM®, DGNB

	Brushed Chrome	22 585 892-93 0010
	Chrome	22 585 892-00 0010
	Brushed Platinum	22 585 892-06 0010
	Platinum	22 585 892-08 0010
	Dark Chrome	22 585 892-19 0010
	Brushed Durabrass (23kt Gold)	22 585 892-28 0010
	Matte Black	22 585 892-33 0010
	Brushed Dark Brass	22 585 892-39 0010
	Brushed Bronze	22 585 892-42 0010
	Brushed Champagne (22kt Gold)	22 585 892-46 0010
	Champagne (22kt Gold)	22 585 892-47 0010
	Brushed Dark Platinum	22 585 892-99 0010

Required miscellaneous



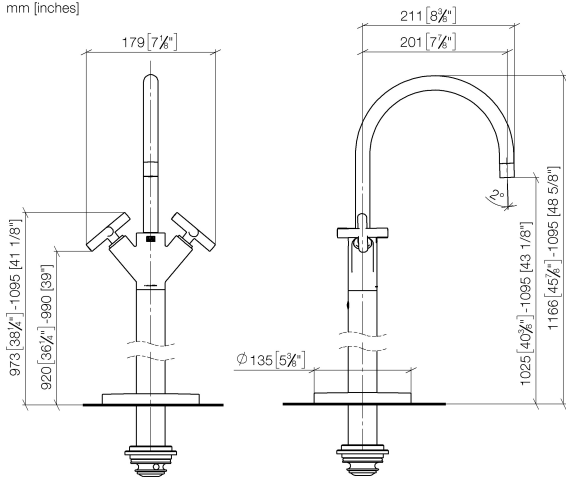
- Concealed floor mounting -**
- max. recess depth 150 mm
 - min. recess depth 80 mm

35 949 970-90
0010

TARA Single-hole basin mixer with stand pipe without pop-up waste - Brushed Chrome

TARA

22 585 892 Product version from 4/1/2024
mm [inches]



Codes & Standards

ADA	ASME A112.18.1	California Energy Commission (CEC)	cUPC
EPA WaterSense	NSF372	NSF61	WaterSense



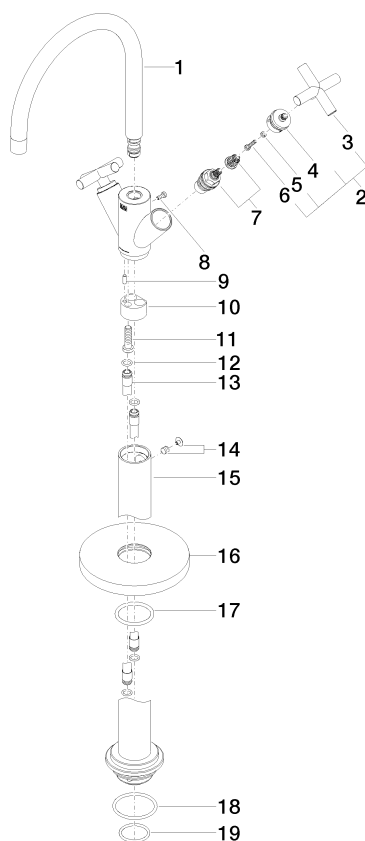
Certificates and sustainability

IAPMO_4976	IAPMO_8834	IAPMO_N-4	IAPMO_6
------------	------------	-----------	---------

TARA Single-hole basin mixer with stand pipe without pop-up waste - Brushed Chrome

TARA

22 585 892 Product version from 4/1/2024



Spare parts list

No.	Item Number	Name	Quantity used	Delivery time
15	04 28 22 028 00-93	pipe	1.00	60
8	09 30 30 054 90	screw	1.00	2
7	90 90 03 151 00 90	top	2.00	2
14	04 31 11 002 00 90	pin	1.00	2
10	09 24 03 193 90	adaptor	1.00	2
13	04 28 22 022 10 90	connection	2.00	2
4	90 12 12 219 00-93	base	2.00	20
9	09 31 11 040 90	pin	1.00	2
1	90 28 22 214 03-93	spout	1.00	-
Spare part can no longer be ordered, please order the replacement item				
16	09 27 88 011-93	rosette	1.00	20
18	09 14 10 084 90	seal	1.00	2
3	09 20 89 010-93	handle	2.00	60
19	09 14 10 018 90	seal	1.00	2
11	09 30 30 047 90	screw	1.00	2
12	09 14 10 139 90	seal	4.00	2
5	90 30 11 029 00 90	disc	2.00	2
6	90 30 30 075 00 90	screw	2.00	2
2	90 20 89 010 10-93	handle	2.00	20
17	90 14 10 043 00 90	seal	1.00	2