

## TARA Single-hole mixer - Platinum

TARA

22 815 892 Product version from 6/30/2009 to 5/27/2021



- 235mm projection
- pivotable spout 360°
- air-enriched flow
- height of mixer 378 mm
- height up to aerator 220 mm
- hole diameter 35 mm
- 2 x pressure hose with 3/8" cap nut
- max. flow 5.7 l/min at 3 bar flow pressure
- lead-free
- This product can help a building meet the requirements of Green Building Rating Systems, e.g. LEED®, BREEAM®, DGNB

Not possible in combination with rinsing spray.

	Platinum	22 815 892-08 0010
	Chrome	22 815 892-00 0010
	Brushed Platinum	22 815 892-06 0010
	Durabronze (23kt Gold)	22 815 892-09 0010
	Dark Chrome	22 815 892-19 0010
	Brushed Durabronze (23kt Gold)	22 815 892-28 0010
	Matte Black	22 815 892-33 0010
	Brushed Bronze	22 815 892-42 0010
	Brushed Champagne (22kt Gold)	22 815 892-46 0010
	Champagne (22kt Gold)	22 815 892-47 0010
	Brushed Chrome	22 815 892-93 0010
	Brushed Dark Platinum	22 815 892-99 0010

### Recommended miscellaneous

**AIR SWITCH Control button -  
Platinum**

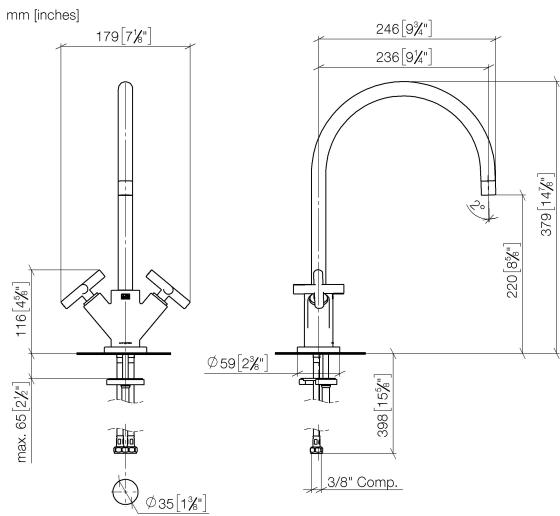
10 713 970-08



**TARA Single-hole mixer - Platinum**

TARA

22 815 892 Product version from 6/30/2009 to 5/27/2021



**Codes & Standards**

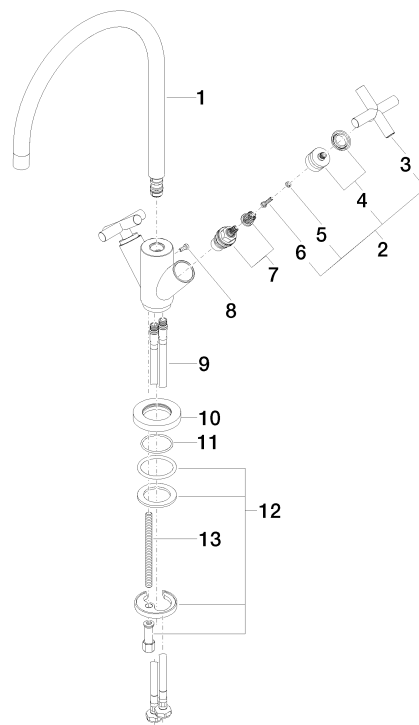
ADA	California Energy Commission (CEC)	NSF372	NSF61
-----	--	--------	-------

**Certificates and sustainability**

IAPMO_N-4	IAPMO_6
-----------	---------

22 815 892 Product version from 6/30/2009 to 5/27/2021

Parts for other  
finishes can be found  
here: [Chrome](#)



## Spare parts list

No.	Item Number	Name	Quantity used	Delivery time
1	90 28 22 226 02-08	spout	1.00	40
7	90 90 03 151 00 90	top	2.00	2
10	09 28 10 132-08	ring	1.00	40
4	90 12 12 007 00-08	base	2.00	40
9	04 30 04 106 00 90	hose	2.00	2
11	09 14 10 134 90	seal	1.00	2
8	09 30 30 054 90	screw	1.00	2
12	04 30 11 038 00 90	fixing set	1.00	2
13	09 31 11 012 90	pin	1.00	2
3	09 20 89 010-08	handle	2.00	60
6	90 30 30 075 00 90	screw	2.00	2
5	90 30 11 029 00 90	disc	2.00	2
2	90 20 89 010 10-08	handle	2.00	40