







CYO Single-lever bath mixer with stand pipe for free-standing assembly with hand shower set - Brushed Platinum

25 863 811



- 253mm projection
- rectangular, air-enriched flow
- max. spout flow rate 26.5 l/min
- Hand shower: COMPACT RAIN, max. flow rate 6.8 l/min (at 3 bar)
- bar-type hand shower with anti-scale system
- wall bracket
- automatic bath/shower diverter
- total height 980 - 1050 mm
- stand pipe height 598 - 668 mm
- height up to aerator 903 – 973 mm
- push-on rosette 131 x 131 mm
- metal shower hose 1250mm with integrated anti-twist protection
- WRAS

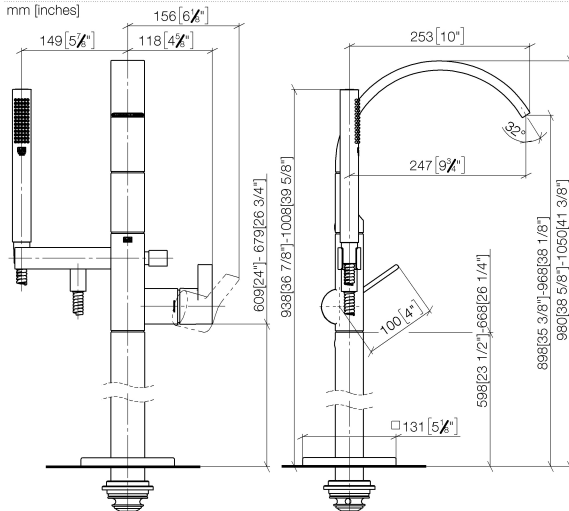
Note: Local building codes may require the use of an anti-scald device. Please refer to remote pressure balance valve (35 910 970 90)

| | | |
|---|-------------------------------|---------------|
|  | Brushed Platinum | 25 863 811-06 |
|  | Chrome | 25 863 811-00 |
|  | Dark Chrome | 25 863 811-19 |
|  | Brushed Durabrass (23kt Gold) | 25 863 811-28 |
|  | Brushed Dark Platinum | 25 863 811-99 |

CYO Single-lever bath mixer with stand pipe for free-standing assembly with hand shower set - Brushed Platinum

25 863 811

mm [inches]



Flow rate chart



Codes & Standards

| | | | |
|----------------|------------------------------------|------------------------|-----------------------------|
| ASME A112.18.1 | California Energy Commission (CEC) | cUPC | DIN 4109 |
| EN 1717 | ISO 3822 | Scottish Water Byelaws | UK Water Supply Regulations |

Ü-Zeichen



CYO Single-lever bath mixer with stand pipe for free-standing assembly with
hand shower set - Brushed Platinum

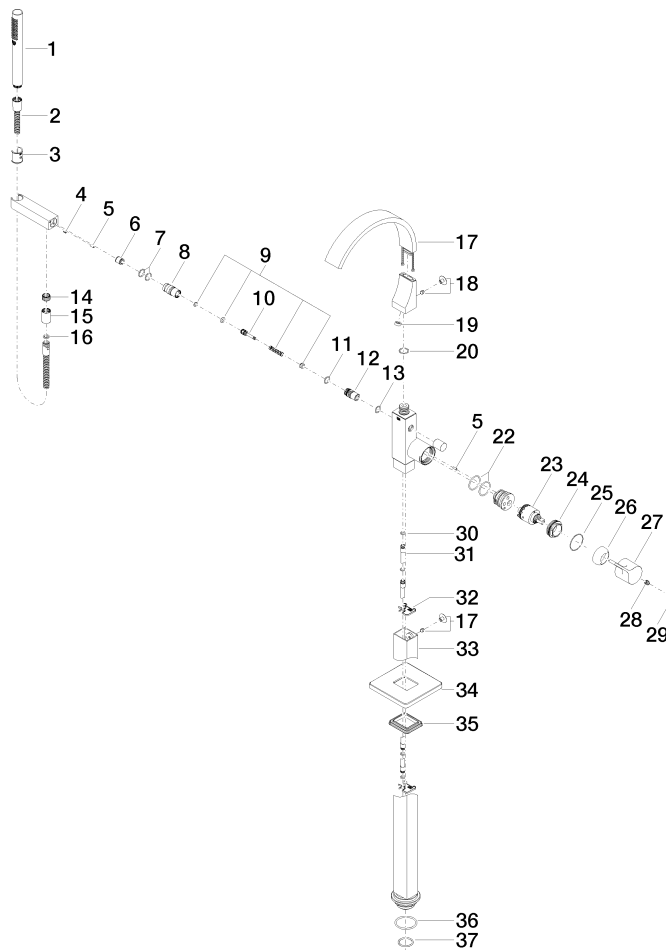
25 863 811
Certificates

| | | | |
|------------|--------|-----------|-------------------|
| IAPMO_4976 | LGA_38 | WRAS_2201 | Belgaqua_21-376-2 |
|------------|--------|-----------|-------------------|

CYO Single-lever bath mixer with stand pipe for free-standing assembly with hand shower set - Brushed Platinum

25 863 811

Parts for other
finishes can be found
here: [Chrome](#)





CYO Single-lever bath mixer with stand pipe for free-standing assembly with hand shower set - Brushed Platinum

25 863 811

Spare parts list

| No. | Item Number | Name | Quantity used | Delivery time |
|-----|--------------------|--|---------------|---------------|
| 1 | 90 12 11 140 41-06 | shower | 1 | 10 |
| 2 | 90 30 02 072 00-06 | Metal shower hose 1/2" x 3/8" x 1250 mm - Brushed Platinum | 1 | 10 |
| 3 | 09 18 40 118 90 | sleeve | 1 | 2 |
| 4 | 09 31 11 058 90 | pin | 1 | 2 |
| 5 | 09 31 11 040 90 | pin | 3 | 2 |
| 6 | 90 23 01 141 00 90 | back-flow preventer | 1 | 2 |
| 7 | 90 14 10 010 00 90 | seal | 2 | 2 |
| 8 | 09 24 03 130-00 | nipple | 1 | 10 |
| 9 | 90 16 02 023 00 90 | spring | 1 | 2 |
| 10 | 09 31 09 094 20-06 | pull-rod | 1 | 10 |
| 11 | 90 14 10 055 00 90 | seal | 1 | 2 |
| 12 | 09 21 34 080-06 | nipple | 1 | 10 |
| 13 | 90 14 10 033 00 90 | seal | 1 | 2 |
| 14 | 09 24 03 069 90 | nipple | 1 | 2 |
| 15 | 90 21 02 069 00-06 | cover | 1 | 10 |
| 16 | 90 14 20 026 00 90 | seal | 1 | 2 |
| 17 | 90 11 70 011 00-06 | spout | 1 | 10 |
| 18 | 04 31 20 034 00 90 | plug | 2 | 2 |
| 19 | 09 23 01 057 90 | flow reducer | 1 | 2 |
| 20 | 09 14 10 031 90 | seal | 2 | 2 |
| 21 | 09 14 10 148 90 | seal | 1 | 2 |
| 22 | 90 15 05 039 00 90 | cartridge | 1 | 2 |
| 23 | 09 24 04 298 90 | nut | 1 | 2 |
| 24 | 09 14 10 037 90 | seal | 1 | 2 |
| 25 | 09 28 30 036-06 | cover | 1 | 10 |
| 26 | 09 20 80 022-06 | handle | 1 | 10 |
| 27 | 90 31 11 030 00 90 | pin | 1 | 2 |
| 28 | 90 31 20 087 00-06 | plug | 1 | 10 |
| 29 | 09 14 10 139 90 | seal | 4 | 2 |
| 30 | 04 28 22 025 00 90 | connection | 2 | 2 |
| 31 | 09 20 93 051 90 | holder | 2 | 2 |
| 32 | 04 28 22 024 00-06 | pipe | 1 | 10 |
| 33 | 09 27 71 011-06 | rosette | 1 | 10 |
| 34 | 09 14 03 107 90 | seal | 1 | 2 |
| 35 | 09 14 10 084 90 | seal | 1 | 2 |
| 36 | 09 14 10 018 90 | seal | 1 | 2 |