

MADISON Two-hole bath mixer for free-standing assembly with hand shower set - Brushed Dark Brass

MADISON


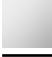
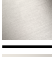




25 943 360 Product version from 7/1/2025



- 245mm projection
- spout: rectangular normal flow
- Hand shower: COMPACT RAIN, max. flow rate 6.8 l/min (at 3 bar)
- hand shower with anti-scale system
- rotary diverter for bath/shower
- wall bracket
- total height 901 mm
- stand pipes height 730 mm
- height up to aerator 610 mm
- slide-on rosettes Ø 90 mm
- gauge 153 mm
- metal shower hose 1250mm with integrated anti-twist protection
- max. flow 51 l/min at 3 bar flow pressure
- WRAS

Intrinsic protection against back flow.

Note: Local building codes may require the use of an anti-scald device. Please refer to remote pressure balance valve (35 910 970 90)

	Brushed Dark Brass	25 943 360-39
	Chrome	25 943 360-00
	Brushed Platinum	25 943 360-06
	Platinum	25 943 360-08
	Durabrass (23kt Gold)	25 943 360-09
	Brushed Durabrass (23kt Gold)	25 943 360-28
	Brushed Dark Platinum	25 943 360-99

MADISON Two-hole bath mixer for free-standing assembly with hand shower set - Brushed Dark Brass

MADISON

25 943 360 Product version from 7/1/2025
mm [inches]



Flow rate chart



Codes & Standards

Scottish Water
Byelaws

UK Water Supply
Regulations



MADISON Two-hole bath mixer for free-standing assembly with hand shower set - Brushed Dark Brass

MADISON

25 943 360 Product version from 7/1/2025

Certificates and sustainability

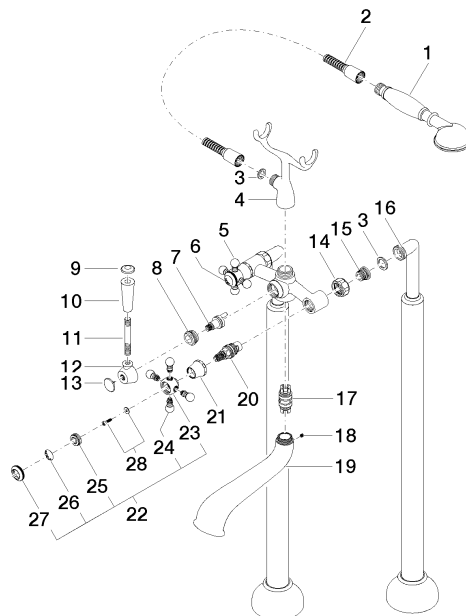
WRAS_250502

MADISON Two-hole bath mixer for free-standing assembly with hand shower set - Brushed Dark Brass

MADISON

25 943 360 Product version from 7/1/2025

Parts for other
finishes can be found
here: [Chrome](#)



Spare parts list



MADISON Two-hole bath mixer for free-standing assembly with hand shower set - Brushed Dark Brass

MADISON

25 943 360 Product version from 7/1/2025				
No.	Item Number	Name	Quantity used	Delivery time
4	04 17 20 010 00-39	holder	1.00	-
Spare part can no longer be ordered, please order the replacement item				
5	04 20 36 002 07-39	handle (hot)	1.00	-
Spare part can no longer be ordered, please order the replacement item				
11	09 28 22 013 90	pipe	1.00	2
3	90 14 20 002 00 90	seal	1.00	2
22	04 20 36 002 06-39	handle (cold)	1.00	-
Spare part can no longer be ordered, please order the replacement item				
27	09 20 36 005-39	handle	2.00	-
Spare part can no longer be ordered, please order the replacement item				
6	09 26 01 011 90	accessories	1.00	2
13	09 30 30 064-39	screw	1.00	-
Spare part can no longer be ordered, please order the replacement item				
17	90 21 10 010 00 90	insert	1.00	2
16	12 943 360-39	connection	1.00	-
Spare part can no longer be ordered, please order the replacement item				
28	04 30 30 029 00 90	fixing set	2.00	2
1	28 002 970-39	MADISON Metal hand shower with porcelain insert (white) - Brushed Dark Brass	1.00	30
9	09 30 30 062-39	screw	1.00	-
Spare part can no longer be ordered, please order the replacement item				
18	90 31 11 030 00 90	pin	1.00	2
21	09 21 02 055-39	cover	2.00	-
Spare part can no longer be ordered, please order the replacement item				
2	28 104 970-39	Metal shower hose 1/2" x 1/2" x 1250 mm - Brushed Dark Brass	1.00	30
24	09 20 36 004-39	handle	8.00	-
Spare part can no longer be ordered, please order the replacement item				
23	09 20 36 002-39	handle	2.00	-
Spare part can no longer be ordered, please order the replacement item				
26	09 26 01 010 90	accessories	1.00	2
14	09 23 30 010-39	nut	2.00	-
Spare part can no longer be ordered, please order the replacement item				
15	04 29 05 014 00 90	nipple	2.00	2
12	09 18 20 011-39	base	1.00	-
Spare part can no longer be ordered, please order the replacement item				
25	09 20 83 006 90	handle	2.00	2
8	09 23 10 007 90	nut	1.00	2
7	90 15 01 001 00 90	diverter	1.00	2
10	11 170 370-39	MADISON Lever insert - Brushed Dark Brass	1.00	30
20	90 90 03 131 00 90	top	2.00	2
19	13 592 380-39	spout	1.00	-
Spare part can no longer be ordered, please order the replacement item				