

## VAIA Two-hole bath mixer for free-standing assembly with hand shower set - Brushed Bronze

VAIA

25 943 809



- spout: circular, air-enriched flow
- max. flow 24.6 l/min at 3 bar flow pressure
- Hand shower: COMPACT RAIN, max. flow rate 6.8 l/min (at 3 bar)
- hand shower with anti-scale system
- 221mm projection
- pivotable spout 360°
- rotary diverter for bath/shower
- total height 920 mm
- stand pipes height 628 mm
- height up to aerator 816 mm
- slide-on rosettes Ø 100 mm
- gauge 150 mm
- metal shower hose 1250mm with integrated anti-twist protection
- pivotable shower holder on the right foot
- WRAS 240502008, 1802014

**Intrinsic protection against back flow.**

**Note: Local building codes may require the use of an anti-scald device. Please refer to remote pressure balance valve (35 910 970 90)**

Intrinsic protection against back flow.

Note: Local building codes may require the use of an anti-scald device. Please refer to remote pressure balance valve (35 910 970 90)

|  |                                |               |
|--|--------------------------------|---------------|
|  | Brushed Bronze                 | 25 943 809-42 |
|  | Chrome                         | 25 943 809-00 |
|  | Brushed Platinum               | 25 943 809-06 |
|  | Platinum                       | 25 943 809-08 |
|  | Dark Chrome                    | 25 943 809-19 |
|  | Brushed Durabronze (23kt Gold) | 25 943 809-28 |
|  | Brushed Champagne (22kt Gold)  | 25 943 809-46 |
|  | Champagne (22kt Gold)          | 25 943 809-47 |
|  | Brushed Dark Platinum          | 25 943 809-99 |

### Required miscellaneous



- Concealed floor mounting -**
- min. recess depth 80 mm
  - max. recess depth 160 mm

35 951 970-90  
0010

## VAIA Two-hole bath mixer for free-standing assembly with hand shower set - Brushed Bronze

VAIA

25 943 809  
mm [inches]



### Flow rate chart



### Codes & Standards

|                                 |  |                                |           |
|---------------------------------|--|--------------------------------|-----------|
| ASME<br>A112.18.1/CSA<br>B125.1 | California Energy<br>Commission<br>(CEC) | DIN 4109                       | EN 1717   |
| ISO 3822                        | Scottish Water<br>Byelaws                | UK Water Supply<br>Regulations | Ü-Zeichen |



## VAIA Two-hole bath mixer for free-standing assembly with hand shower set - Brushed Bronze

---

VAIA

25 943 809

Certificates

---

Belgauqa\_22\_276\_2 LGA\_29

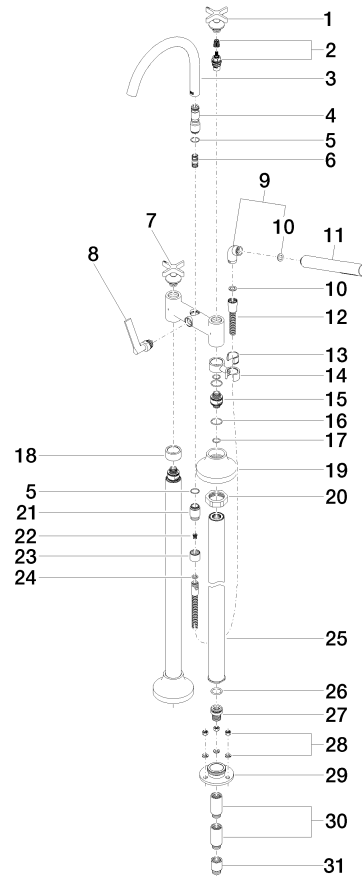
WRAS\_240502

**VAIA Two-hole bath mixer for free-standing assembly with hand shower set -  
Brushed Bronze**

VAIA

25 943 809

**Product version from 5/27/2021**





## VAIA Two-hole bath mixer for free-standing assembly with hand shower set - Brushed Bronze

---

VAIA

25 943 809

### **Spare parts list**

**Product version from 5/27/2021**