

## Shower system without hand shower - Matte Black

## SERIES SPECIFIC

26 024 661 Product version from 10/1/2023



- pivotable 180°
  - overhead shower: rain flow
  - rain shower with anti-scale system
  - max. rainshower flow 6.8 l/min
  - Function from: 6.5 l/min
  - rain shower Ø 300 mm
  - shower holder with rosette Ø 78mm
  - metal shower hose 1250mm with integrated anti-twist protection
  - height of fittings up to top edge of elbow 2280mm
  - height of fittings up to rain shower (bottom edge) 1940mm
  - automatic diverter for fixed-riser shower/hand shower
  - slide-on rosettes Ø 55 mm
  - Pipe diameter 20 mm
  - quick clearing
  - This product reduces water consumption by 28% (compared to requirements of EAct '92)
  - This product can contribute to Water Use Reduction in LEED® Green Building Rating
  - This product can help a building meet the requirements of Green Building Rating Systems, e.g. LEED®, BREEAM®, DGNB
- Recommended spacing from bottom edge of shower stem to floor 92 mm.**
- Note: Local building codes may require the use of an anti-scald device. Please refer to remote pressure balance valve (35 910 970 90)**
- Intrinsic protection against back flow.**

**NOTE: Hand shower sold separately. Please see hand shower options under the miscellaneous articles section of each series.**

**Water carrying concealed rough parts on lower wall fixing.**

Recommended spacing from bottom edge of shower stem to floor 92 mm.

Note: Local building codes may require the use of an anti-scald device. Please refer to remote pressure balance valve (35 910 970 90)

Intrinsic protection against back flow.

NOTE: Hand shower sold separately. Please see hand shower options under the miscellaneous articles section of each series.

Water carrying concealed rough parts on lower wall fixing.


	Matte Black	26 024 661-33 0010
	Chrome	26 024 661-00 0010
	Brushed Platinum	26 024 661-06 0010
	Platinum	26 024 661-08 0010
	Dark Chrome	26 024 661-19 0010
	Light Gold	26 024 661-26 0010
	Brushed Light Gold	26 024 661-27 0010
	Brushed Durabronze (23kt Gold)	26 024 661-28 0010
	Brushed Bronze	26 024 661-42 0010
	Brushed Champagne (22kt Gold)	26 024 661-46 0010
	Champagne (22kt Gold)	26 024 661-47 0010
	Brushed Chrome	26 024 661-93 0010
	Brushed Dark Platinum	26 024 661-99 0010

Shower system without hand shower - Matte Black


SERIES SPECIFIC

26 024 661    Product version from 10/1/2023

Required miscellaneous

	<b>Concealed wall mounting -</b> •max. recess depth 103 mm •min. recess depth 78 mm	35 003 970-90 0010
---	---	-----------------------

Required miscellaneous

	<b>Hand shower FlowReduce - Matte Black</b>	28 016 979-33 0010
---	---	-----------------------


Required miscellaneous

	<b>SERIES-VARIOUS Hand shower FlowReduce - Matte Black</b>	28 027 979-33 0010
---	--	-----------------------


Required miscellaneous

	<b>SERIES-VARIOUS Hand shower FlowReduce - Matte Black</b>	28 025 979-33 0010
---	--	-----------------------

Required miscellaneous

	<b>Hand shower FlowReduce - Matte Black</b>	28 012 979-33 0010
---	---	-----------------------

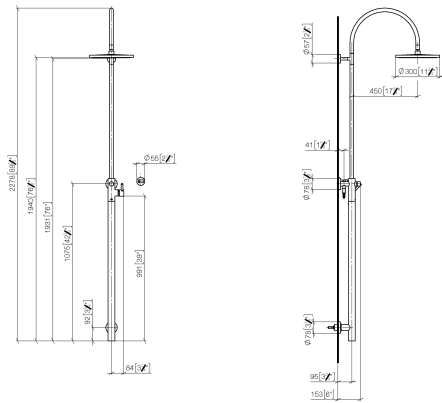
Required miscellaneous

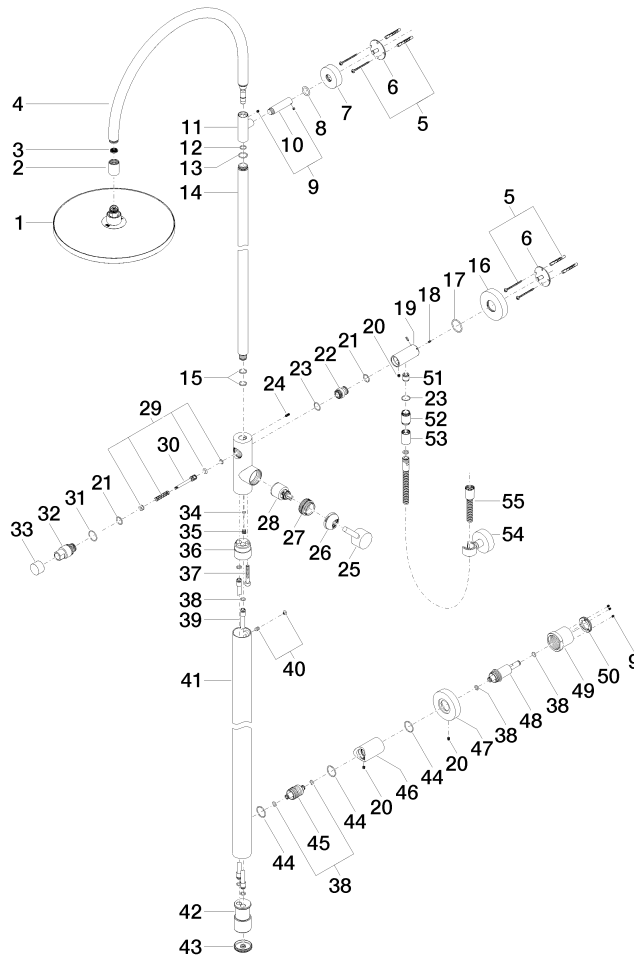
	<b>Hand shower FlowReduce - Matte Black</b>	28 018 979-33 0010
---	---	-----------------------

Required miscellaneous

	<b>SERIES-VARIOUS Hand shower FlowReduce - Matte Black</b>	28 029 979-33 0010
---	--	-----------------------

mm [inch]





## Spare parts list

No.	Item Number	Name	Quantity used	Delivery time
37	09 30 30 111 90	screw	1.00	2
40	04 31 20 034 00 90	plug	1.00	2
27	09 24 04 341 90	nut	1.00	60
33	09 20 88 002-33	handle	1.00	30
17	09 14 10 101 90	seal	1.00	2
46	09 11 10 080 20-33	connection	1.00	30
55	90 30 02 072 00-33	Metal shower hose 1/2" x 3/8" x 1250 mm - Matte Black	1.00	30
5	05 30 31 025 00 90	fixing set	2.00	2
4	90 28 22 082 00-33	spout	1.00	-
Spare part can no longer be ordered, please order the replacement item				
29	90 16 02 023 00 90	spring	1.00	2
49	09 21 02 128 90	sleeve	1.00	2
30	09 31 09 102 20-33	pull-rod	1.00	-
Spare part can no longer be ordered, please order the replacement item				
38	09 14 10 139 90	seal	6.00	2
47	09 27 88 008-33	rosette	1.00	30
11	09 17 11 049-33	holder	1.00	60
16	09 27 88 010-33	rosette	1.00	30
25	90 20 66 017 00-33	handle	1.00	30

## Shower system without hand shower - Matte Black

SERIES SPECIFIC

26 024 661 Product version from 10/1/2023

28	90 15 05 064 00 90	cartridge	1.00	2
20	09 31 11 049 90	pin	3.00	2
54	28 050 920-33	holder	1.00	-
Spare part can no longer be ordered, please order the replacement item				
14	04 28 22 134 20-33	pipe	1.00	30
2	09 24 03 163 20-33	adaptor	1.00	30
45	09 24 04 215 20 90	nipple	1.00	2
24	09 31 11 024 90	pin	1.00	2
39	04 28 22 038 00 90	connection	2.00	2
35	09 31 20 027 10-00	plug	1.00	10
10	09 11 10 083-33	connection	1.00	30
13	09 14 10 122 90	seal	1.00	2
41	04 28 22 034 00-33	pipe	1.00	30
3	09 23 01 039 90	sieve	1.00	2
36	09 24 03 149 10-33	adaptor	1.00	-
Spare part can no longer be ordered, please order the replacement item				
18	09 31 11 061 90	pin	2.00	2
26	09 28 30 042-33	cover	1.00	30
50	09 24 77 002 90	nut	1.00	2
31	09 14 10 112 90	seal	1.00	2
32	09 21 34 081 20-33	nipple	1.00	30
34	09 14 10 132 90	seal	1.00	2
7	09 27 89 000-33	rosette	1.00	30
6	09 30 11 103 90	holder	2.00	2
19	09 11 10 081 20-33	connection	1.00	30
22	09 24 03 162 20 90	nipple	1.00	2
8	09 14 10 006 90	seal	1.00	2
43	09 21 02 132-33	lid	1.00	30
1	04 12 05 091 10-33	shower	1.00	30
52	09 24 03 115 20-33	nipple	1.00	30
42	09 17 11 024 20 90	distributor	1.00	60
48	09 24 04 210 10 90	nipple	1.00	2
15	90 14 10 055 00 90	seal	2.00	2
12	90 14 10 077 00 90	seal	1.00	2
21	90 14 10 010 00 90	seal	2.00	2
51	90 23 01 141 00 90	back-flow preventer	1.00	2
53	90 21 02 069 00-33	cover	1.00	30
44	90 14 10 063 00 90	seal	3.00	2
23	90 14 10 032 00 90	seal	2.00	2
9	90 31 11 030 00 90	pin	1.00	2