



- shower hose connector 1/2"
- metal shower hose 1750mm with integrated anti-twist protection
- slide bar

Technical data:

- gauge 850 mm
- rosettes Ø 60 mm
- Pipe diameter 18 mm

Notes:

- WRAS

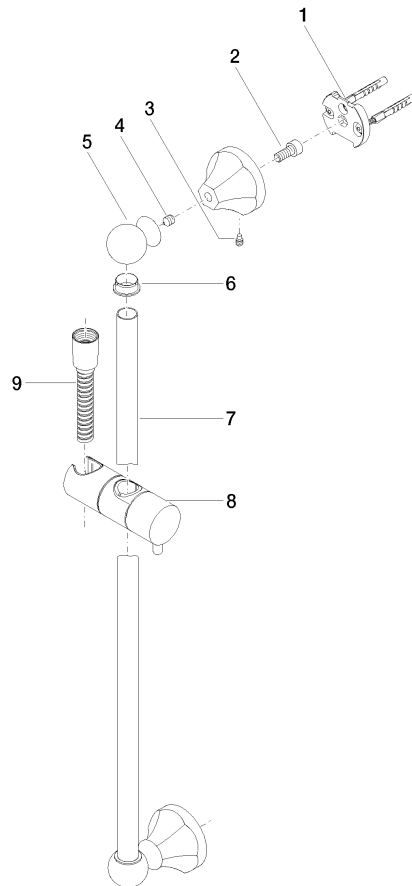
This article does not include a hand shower!

NOTE: Hand shower sold separately. Please see hand shower options under the miscellaneous articles section of each series.

	Brushed Dark Brass	26 413 370-39
	Chrome	26 413 370-00
	Brushed Platinum	26 413 370-06
	Platinum	26 413 370-08
	Durabrass (23kt Gold)	26 413 370-09
	Brushed Durabrass (23kt Gold)	26 413 370-28
	Brushed Bronze	26 413 370-42
	Brushed Dark Platinum	26 413 370-99



Parts for other
finishes can be found
here: [Chrome](#)



Spare parts list

No.	Item Number	Name	Quantity used	Delivery time
8	12 580 970-39	Slide unit - Brushed Dark Brass	1.00	70
1	05 17 97 507 00 90	fixing set	2.00	2
5	09 21 40 020-39	connection	2.00	60
6	09 18 40 009 90	sleeve	2.00	2
2	09 30 30 048 90	screw	2.00	2
7	08 28 22 596-39	pipe	1.00	-
Spare part can no longer be ordered, please order the replacement item				
3	09 31 11 140 90	pin	2.00	60
4	09 31 11 002 90	pin	2.00	2
9	28 204 970-39	Metal shower hose 1/2" x 1/2" x 1750 mm - Brushed Dark Brass	1.00	30