

TARA Shower set without hand shower - Brushed Platinum

TARA

26 413 892 Product version from 4/1/2024




- slide bar
- Pipe diameter 18 mm
- rosettes Ø 55 mm
- gauge 800 mm
- metal shower hose 1750mm with integrated anti-twist protection
- shower hose connector 3/8"
- WRAS

This article does not include a hand shower!


NOTE: Hand shower sold separately. Please see hand shower options under the miscellaneous articles section of each series.

	Brushed Platinum	26 413 892-06
	Chrome	26 413 892-00
	Platinum	26 413 892-08
	Dark Chrome	26 413 892-19
	Brushed Durabronze (23kt Gold)	26 413 892-28
	Matte Black	26 413 892-33
	Brushed Dark Brass	26 413 892-39
	Brushed Bronze	26 413 892-42
	Brushed brass (PVD)	26 413 892-43
	Brushed Champagne (22kt Gold)	26 413 892-46
	Champagne (22kt Gold)	26 413 892-47
	Brushed Chrome	26 413 892-93
	Brushed Dark Platinum	26 413 892-99

Recommended miscellaneous

	Concealed adapter -	35 080 970-90 0010
---	----------------------------	--------------------

Required miscellaneous

	Hand shower FlowReduce - Brushed Platinum	28 016 979-06 0010
---	--	--------------------

Required miscellaneous

	Hand shower FlowReduce - Brushed Platinum	28 018 979-06 0010
---	--	--------------------


Required miscellaneous

	SERIES-VARIOUS Hand shower FlowReduce - Brushed Platinum	28 027 979-06 0010
---	---	--------------------

Required miscellaneous

	Hand shower FlowReduce - Brushed Platinum	28 012 979-06 0010
---	--	--------------------

Recommended miscellaneous

	Wall elbow - Brushed Platinum	28 450 625-06
---	--------------------------------------	---------------

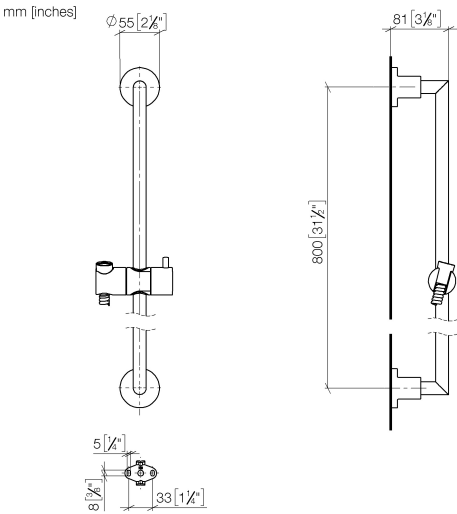
Required miscellaneous

	SERIES-VARIOUS Hand shower FlowReduce - Brushed Platinum	28 025 979-06 0010
---	---	--------------------

Required miscellaneous

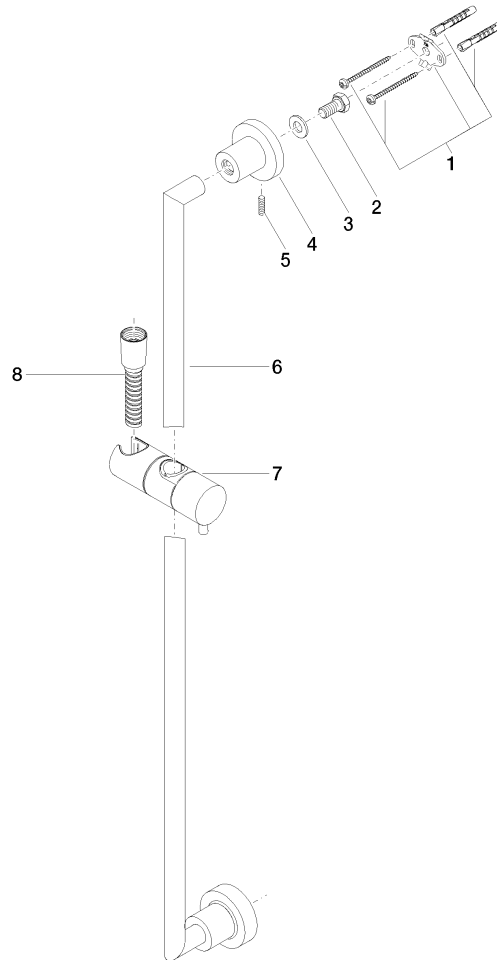
	SERIES-VARIOUS Hand shower FlowReduce - Brushed Platinum	28 029 979-06 0010
---	---	--------------------

26 413 892 Product version from 4/1/2024



Codes & Standards			
ASME A112.18.1	cUPC	Scottish Water Byelaws	UK Water Supply Regulations
XP P 41-280			

Certificates and sustainability		
WRAS_2009	ACS_20 ACC LY	IAPMO_4976



Spare parts list

No.	Item Number	Name	Quantity used	Delivery time
	2 09 30 30 071 90	screw	2.00	2
	3 09 30 11 046 90	disc	2.00	2
	5 04 31 11 113 00 90	pin	2.00	2
	7 12 580 970-06	Slide unit - Brushed Platinum	1.00	50
	6 05 28 22 590 00-06	bar	1.00	10
	1 05 17 20 739 00 90	fixing set	2.00	2
	4 08 17 89 505-06	holder	2.00	10
	8 28 322 970-06	Metal shower hose 1/2" x 3/8" x 1750 mm - Brushed Platinum	1.00	2