

## TARA Shower set without hand shower - Brushed Chrome

26 413 892 Product version from 4/1/2024



- slide bar
- Pipe diameter 18 mm
- rosettes Ø 55 mm
- gauge 800 mm
- metal shower hose 1750mm with integrated anti-twist protection
- shower hose connector 3/8"
- WRAS

This article does not include a hand shower!

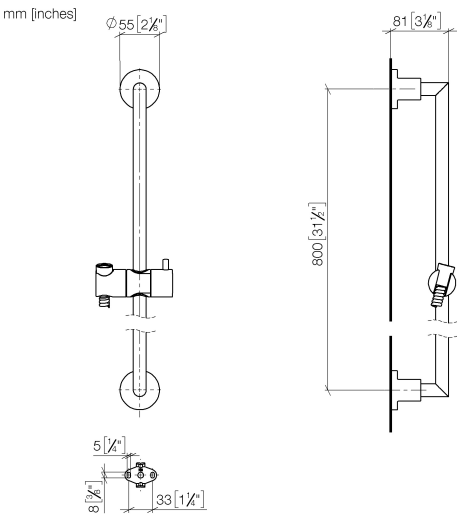
NOTE: Hand shower sold separately. Please see hand shower options under the miscellaneous articles section of each series.

|   |                                |               |
|---|--------------------------------|---------------|
|    | Brushed Chrome                 | 26 413 892-93 |
|    | Chrome                         | 26 413 892-00 |
|    | Brushed Platinum               | 26 413 892-06 |
|    | Platinum                       | 26 413 892-08 |
|    | Dark Chrome                    | 26 413 892-19 |
|    | Brushed Durabronze (23kt Gold) | 26 413 892-28 |
|    | Matte Black                    | 26 413 892-33 |
|    | Brushed Bronze                 | 26 413 892-42 |
|    | Brushed Champagne (22kt Gold)  | 26 413 892-46 |
|   | Champagne (22kt Gold)          | 26 413 892-47 |
|  | Brushed Dark Platinum          | 26 413 892-99 |



TARA Shower set without hand shower - Brushed Chrome

26 413 892    Product version from 4/1/2024



Codes & Standards

|                |      |                           |                                |
|----------------|------|---------------------------|--------------------------------|
| ASME A112.18.1 | cUPC | Scottish Water<br>Byelaws | UK Water Supply<br>Regulations |
| XP P 41-280    |      |                           |                                |

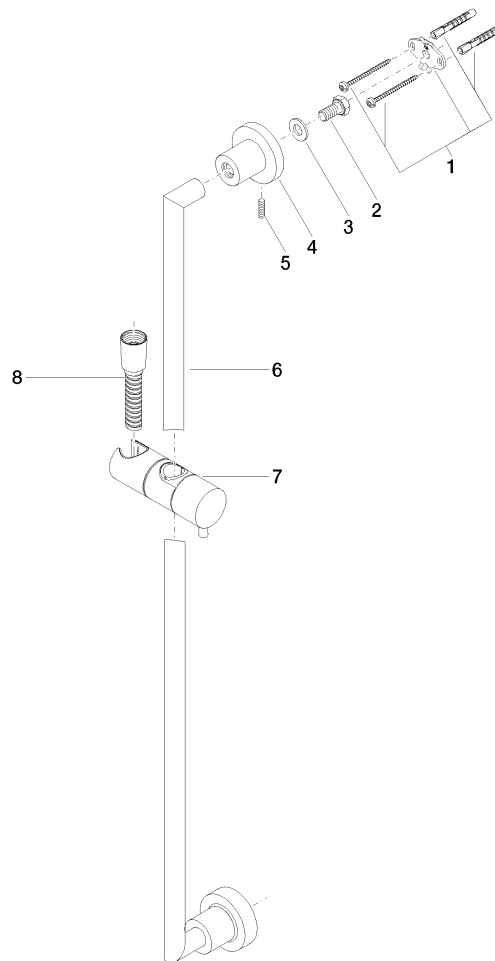
Certificates

|           |               |            |
|-----------|---------------|------------|
| WRAS_2009 | ACS_20 ACC LY | IAPMO_4976 |
|-----------|---------------|------------|

## TARA Shower set without hand shower - Brushed Chrome

26 413 892 Product version from 4/1/2024

Parts for other  
finishes can be found  
here: [Chrome](#)



### Spare parts list

| No. | Item Number        | Name   | Quantity used | Delivery time |
|-----|--------------------|--|---------------|---------------|
| 1   | 05 17 20 739 00 90 | fixing set   | 2             | 2             |
| 2   | 09 30 30 071 90    | screw  | 2             | 2             |
| 3   | 09 30 11 046 90    | disc   | 2             | 2             |
| 4   | 08 17 89 505-93    | holder   | 2             | 20            |
| 5   | 04 31 11 113 00 90 | pin  | 2             | 2             |
| 6   | 05 28 22 590 00-93 | bar  | 1             | 20            |
| 7   | 12 580 970-93      | Slide unit - Brushed Chrome                              | 1             | 20            |
| 8   | 28 322 970-93      | Metal shower hose 1/2" x 3/8" x 1750 mm - Brushed Chrome | 1             | 20            |