

TARA Shower set without hand shower - Brushed Dark Platinum

26 413 892 Product version from 4/1/2024




- slide bar
- Pipe diameter 18 mm
- rosettes Ø 55 mm
- gauge 800 mm
- metal shower hose 1750mm with integrated anti-twist protection
- shower hose connector 3/8"
- WRAS

This article does not include a hand shower!

NOTE: Hand shower sold separately. Please see hand shower options under the miscellaneous articles section of each series.

	Brushed Dark Platinum	26 413 892-99
	Chrome	26 413 892-00
	Brushed Platinum	26 413 892-06
	Platinum	26 413 892-08
	Dark Chrome	26 413 892-19
	Brushed Durabronze (23kt Gold)	26 413 892-28
	Matte Black	26 413 892-33
	Brushed Bronze	26 413 892-42
	Brushed Champagne (22kt Gold)	26 413 892-46
	Champagne (22kt Gold)	26 413 892-47
	Brushed Chrome	26 413 892-93

Recommended miscellaneous

	Concealed adapter -	35 080 970-90 0010
---	----------------------------	--------------------

Required miscellaneous

	Hand shower FlowReduce - Brushed Dark Platinum	28 016 979-99 0010
---	---	--------------------

Required miscellaneous

	Hand shower FlowReduce - Brushed Dark Platinum	28 018 979-99 0010
---	---	--------------------

Required miscellaneous

	SERIES-VARIOUS Hand shower FlowReduce - Brushed Dark Platinum	28 027 979-99 0010
---	--	--------------------

Recommended miscellaneous

	Wall elbow - Brushed Dark Platinum	28 450 625-99
---	---	---------------

Required miscellaneous

	Hand shower FlowReduce - Brushed Dark Platinum	28 012 979-99 0010
---	---	--------------------

Required miscellaneous

	SERIES-VARIOUS Hand shower FlowReduce - Brushed Dark Platinum	28 029 979-99 0010
---	--	--------------------

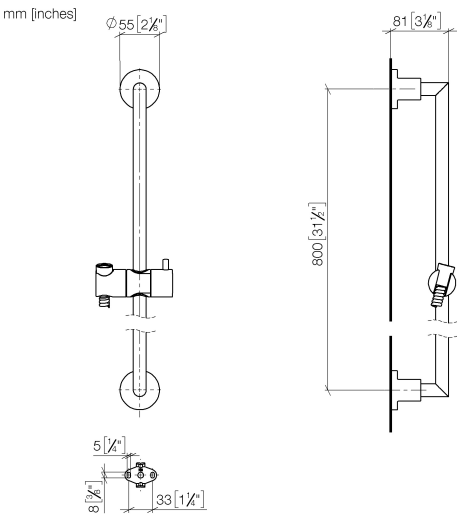
Required miscellaneous

	SERIES-VARIOUS Hand shower FlowReduce - Brushed Dark Platinum	28 025 979-99 0010
---	--	--------------------



TARA Shower set without hand shower - Brushed Dark Platinum

26 413 892 Product version from 4/1/2024



Codes & Standards

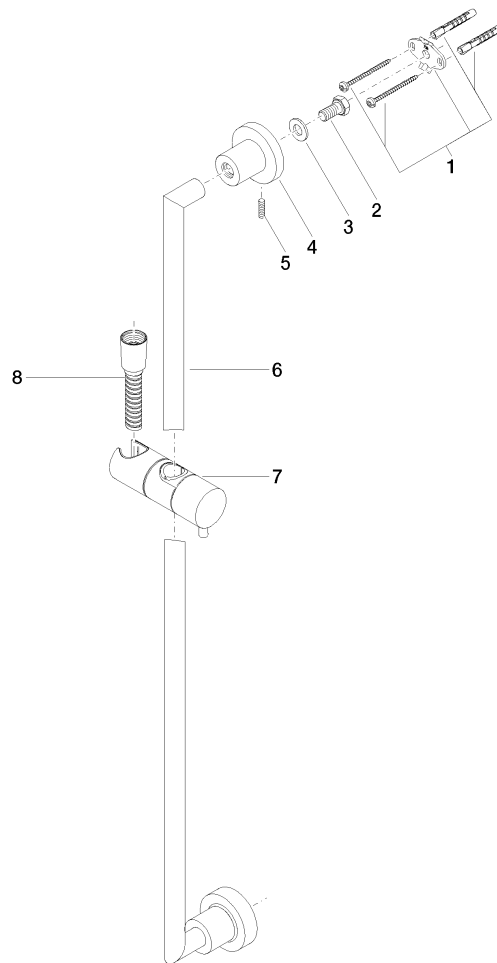
ASME A112.18.1	cUPC	Scottish Water Byelaws	UK Water Supply Regulations
XP P 41-280			

Certificates

WRAS_2009	ACS_20 ACC LY	IAPMO_4976
-----------	---------------	------------

TARA Shower set without hand shower - Brushed Dark Platinum

26 413 892 Product version from 4/1/2024



Spare parts list

No.	Item Number	Name	Quantity used	Delivery time
1	05 17 20 739 00 90	fixing set	2	2
2	09 30 30 071 90	screw	2	2
3	09 30 11 046 90	disc	2	2
4	08 17 89 505-99	holder	2	20
5	04 31 11 113 00 90	pin	2	2
6	05 28 22 590 00-99	bar	1	20
7	12 580 970-99	Slide unit - Brushed Dark Platinum	1	20
8	28 322 970-99	Metal shower hose 1/2" x 3/8" x 1750 mm - Brushed Dark Platinum	1	2