

## Shower set without hand shower - Brushed Dark Platinum

SERIES-VARIOUS

26 413 979 Product version from 10/1/2023




- COMPACT RAIN, max. flow rate l/min (at 3 bar)
- gauge 853 mm
- shower hose connector 3/8"
- metal shower hose 1750mm with integrated anti-twist protection
- slide bar
- Pipe diameter 18 mm
- inherently safe from back flow
- WRAS

This article does not include a hand shower!

NOTE: Hand shower sold separately. Please see hand shower options under the miscellaneous articles section of each series.

	Brushed Dark Platinum	26 413 979-99
	Chrome	26 413 979-00
	Brushed Platinum	26 413 979-06
	Platinum	26 413 979-08
	Dark Chrome	26 413 979-19
	Light Gold	26 413 979-26
	Brushed Light Gold	26 413 979-27
	Brushed Durabronze (23kt Gold)	26 413 979-28
	Matte Black	26 413 979-33
	Brushed Dark Brass	26 413 979-39
	Brushed Bronze	26 413 979-42
	Brushed Champagne (22kt Gold)	26 413 979-46
	Champagne (22kt Gold)	26 413 979-47
	Brushed Chrome	26 413 979-93

### Recommended miscellaneous

	<b>Concealed adapter -</b>	35 080 970-90 0010
---	----------------------------	--------------------

### Required miscellaneous

	<b>Hand shower FlowReduce - Brushed Dark Platinum</b>	28 012 979-99 0010
---	---	--------------------

### Required miscellaneous

	<b>Hand shower FlowReduce - Brushed Dark Platinum</b>	28 018 979-99 0010
---	---	--------------------

### Required miscellaneous

	<b>SERIES-VARIOUS Hand shower FlowReduce - Brushed Dark Platinum</b>	28 029 979-99 0010
---	--	--------------------

### Required miscellaneous

	<b>Hand shower FlowReduce - Brushed Dark Platinum</b>	28 016 979-99 0010
---	---	--------------------

### Recommended miscellaneous

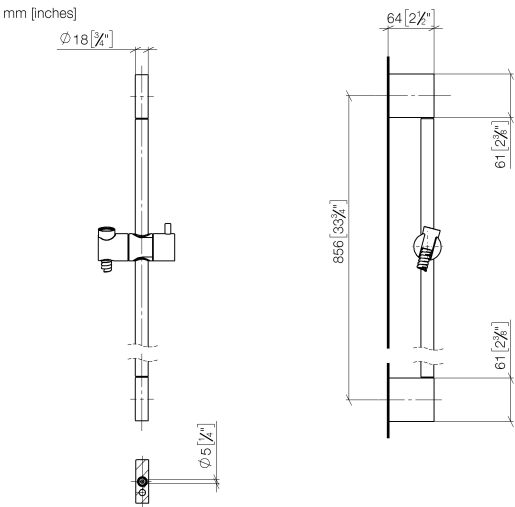
	<b>Wall elbow - Brushed Dark Platinum</b>	28 450 980-99
---	---	---------------

### Required miscellaneous

	<b>SERIES-VARIOUS Hand shower FlowReduce - Brushed Dark Platinum</b>	28 025 979-99 0010
---	--	--------------------

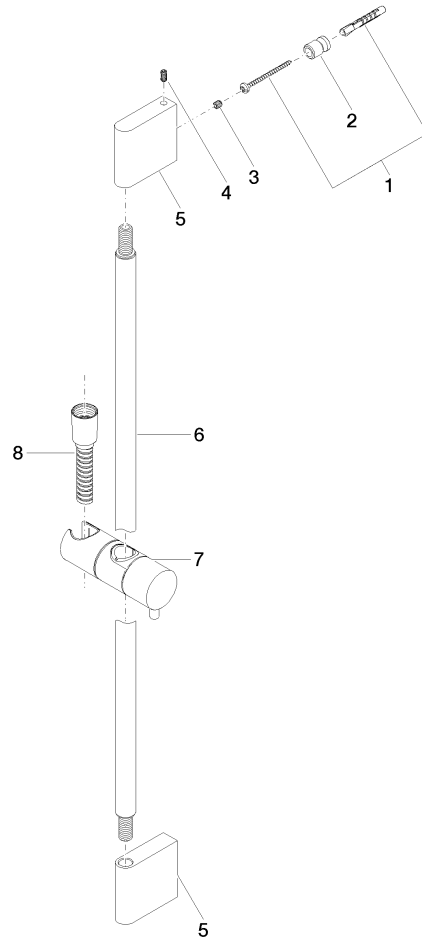
26 413 979

Product version from 10/1/2023



Codes & Standards			
ASME A112.18.1	cUPC	Scottish Water Byelaws	UK Water Supply Regulations
XP P 41-280			

Certificates and sustainability		
WRAS_2009	ACS_20 ACC LY	IAPMO_4976



## Spare parts list

No.	Item Number	Name	Quantity used	Delivery time
8	28 322 970-99	Metal shower hose 1/2" x 3/8" x 1750 mm - Brushed Dark Platinum	1.00	2
4	04 31 11 113 00 90	pin	2.00	2
5	08 17 97 054-99	holder	2.00	20
6	90 28 22 597 00-99	holder	1.00	20
7	12 580 970-99	Slide unit - Brushed Dark Platinum	1.00	20
2	08 17 20 726 90	holder	2.00	2
3	09 31 11 049 90	pin	2.00	2
1	05 17 20 726 02 90	fixing set	2.00	2