



**Rain shower:**

- rain shower Ø 300 mm
- overhead shower: rain flow
- max. rainshower flow 6.8 l/min
- Function from: 6.5 l/min

**hand shower:**

**Control element:**

- rotary diverter for fixed-riser shower/hand shower
- 1500 mm metal shower hose

**Technical data:**

- shower with fixed riser projection 420mm
- height of fittings up to rain shower (bottom edge) 1007mm
- height of fittings up to top edge of elbow 1167mm
- rain shower with anti-scale system
- rosette for shower holder Ø 55mm
- rosette for wall mounting Ø 57mm
- rosette for shower mixer Ø 65mm
- Pipe diameter 20 mm
- gauge 150 mm - 13 mm
- 1/2" connection

**Notes:**

- This product can help a building meet the requirements of Green Building Rating Systems, e.g. LEED®, BREEAM®, DGNB

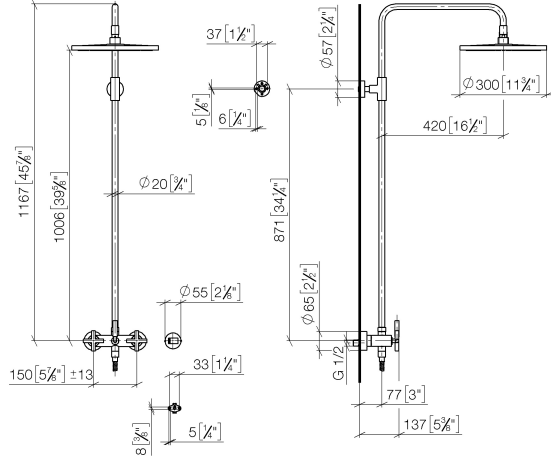
This article does not include a hand shower!

Intrinsic protection against back flow.

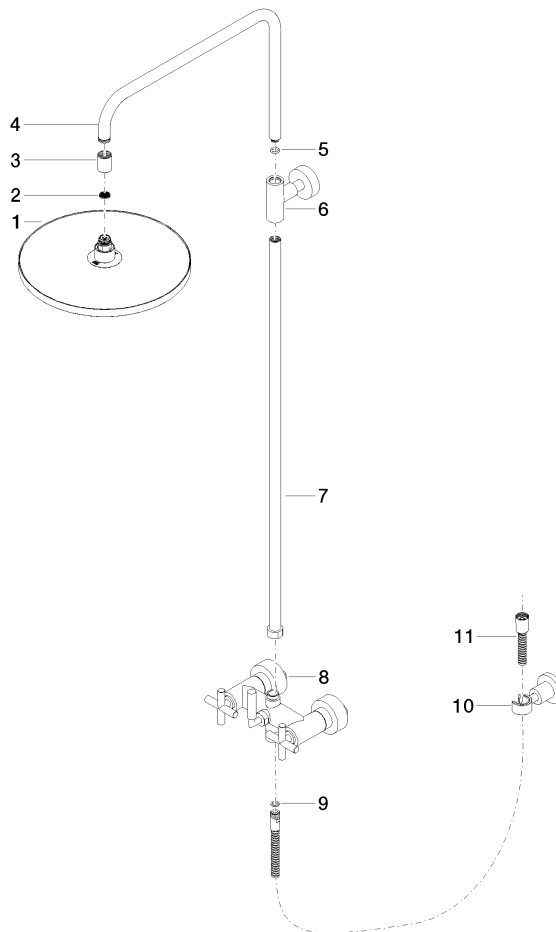
|   |                               |                    |
|---|-------------------------------|--------------------|
|    | Matte Black                   | 26 623 892-33 0010 |
|    | Chrome                        | 26 623 892-00 0010 |
|    | Brushed Platinum              | 26 623 892-06 0010 |
|    | Platinum                      | 26 623 892-08 0010 |
|    | Dark Chrome                   | 26 623 892-19 0010 |
|    | Brushed Durabrass (23kt Gold) | 26 623 892-28 0010 |
|    | Brushed Dark Brass            | 26 623 892-39 0010 |
|    | Brushed Bronze                | 26 623 892-42 0010 |
|    | Brushed Champagne (22kt Gold) | 26 623 892-46 0010 |
|   | Champagne (22kt Gold)         | 26 623 892-47 0010 |
|  | Brushed Chrome                | 26 623 892-93 0010 |
|  | Brushed Dark Platinum         | 26 623 892-99 0010 |

26 623 892 Product version from 4/1/2024

mm [inches]  
1:10



Parts for other  
finishes can be found  
here: [Chrome](#)



## Spare parts list

| No.  | Item Number        | Name  | Quantity used | Delivery time |
|--|--------------------|---|---------------|---------------|
| 7  | 90 28 22 096 00-33 | pipe  | 1.00          | 30            |
| 3  | 09 24 03 177 20-33 | adaptor   | 1.00          | 30            |
| 9  | 90 14 20 026 00 90 | seal  | 1.00          | 2             |
| 1  | 04 12 05 091 10-33 | shower  | 1.00          | 30            |
| 6  | 90 17 11 037 00-33 | holder  | 1.00          | -             |
| Spare part can no longer be ordered, please order the replacement item |                    |   |               |               |
| 11   | 28 304 970-33      | Metal shower hose 1/2" x 3/8" x 1500 mm - Matte Black | 1.00          | 30            |
| 8  | 04 17 10 020 01-33 | fitting   | 1.00          | 30            |
| 2  | 09 23 01 039 90    | sieve   | 1.00          | 2             |
| 4  | 04 28 22 101 20-33 | spout   | 1.00          | 30            |
| 5  | 90 14 10 011 00 90 | seal  | 1.00          | 2             |
| 10   | 28 050 892-33      | TARA Wall bracket - Matte Black                       | 1.00          | 10            |