

LULU Bath shower set for bath rim or tile edge installation - Chrome

LULU



27 512 710 Product version from 8/31/2015 to 5/15/2020



- spout: circular, air-enriched flow
- max. flow 23.5 l/min at 3 bar flow pressure
- Hand shower: COMPACT RAIN, max. flow rate 6.8 l/min (at 3 bar)
- complete hand shower set with anti-scale system
- 215mm projection
- automatic bath/shower diverter
- height of mixer 110 mm
- height up to aerator 84 mm
- hole diameter valve 32 mm
- hole diameter spout 32 mm
- hole diameter for complete hand shower set 32 mm
- rosette for spout 63 x 63mm
- rosette for complete hand shower set 63 x 63mm
- rosette for deck valve 63 x 63mm
- metal shower hose 1750mm with integrated anti-twist protection

Intrinsic protection against back flow.

Note: Local building codes may require the use of an anti-scald device. Please refer to remote pressure balance valve (35 910 970 90)

	Chrome	27 512 710-00
	Brushed Platinum	27 512 710-06

27 512 710 Product version from 8/31/2015 to 5/15/2020



Flow rate chart



Codes & Standards

ASME A112.18.1

California Energy
Commission
(CEC)

cUPC

DIN 4109

ISO 3822

Ü-Zeichen



LULU Bath shower set for bath rim or tile edge installation - Chrome

LULU

27 512 710 Product version from 8/31/2015 to 5/15/2020

Certificates and sustainability

LGA_19

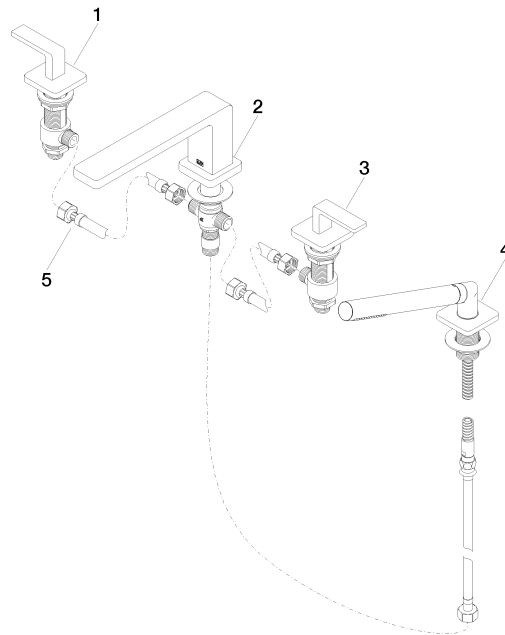
IAPMO_4976

LULU Bath shower set for bath rim or tile edge installation - Chrome

LULU

27 512 710 Product version from 8/31/2015 to 5/15/2020

Parts for other
finishes can be found
here: Brushed
Platinum



Spare parts list

No.	Item Number	Name	Quantity used	Delivery time
4	27 702 710-00	LULU Hand shower set for bath rim or tile edge installation - Chrome	1.00	-
Spare part can no longer be ordered, please order the replacement item				
5	12 502 970 90	High pressure hose 1/2" x 1/2" x 400 mm -	1.00	2
3	20 000 711-00	side panel	1.00	60
2	13 512 710-00	spout	1.00	60
1	20 000 710-00	side panel	1.00	60