

## Rinsing spray set - Brushed Platinum

SERIES-VARIOUS

27 723 970 Product version from 2/1/2023



- with angular rosette
- spray flow
- automatic spout/shower diverter
- height of mixer 190 mm
- hole diameter rinsing spray 32mm
- fabric braided hose 1500 mm
- sprayface with anti-scaling system
- lead-free

Can only be combined with 33826680, 32815680.

Intrinsic protection against back flow.

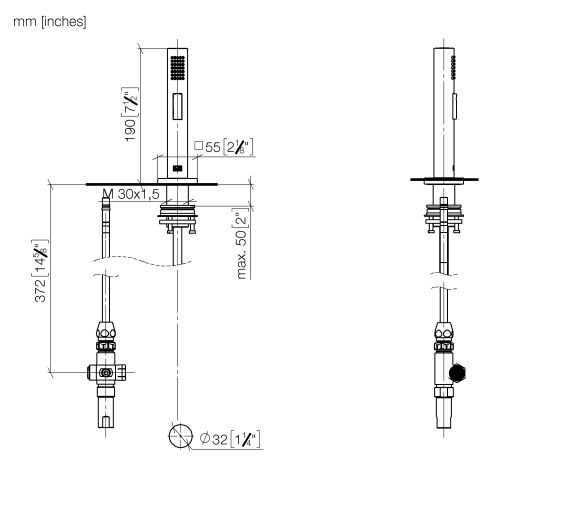
Residual water may emerge from the spray after closing.

Operating unit can be positioned freely.

Button has to be pressed while using.

|   |                                     |               |
|---|-------------------------------------|---------------|
|  | Brushed Platinum                    | 27 723 970-06 |
|  | Chrome                              | 27 723 970-00 |
|  | Platinum                            | 27 723 970-08 |
|  | Dark Chrome                         | 27 723 970-19 |
|  | Brushed Durabronze<br>(23kt Gold)   | 27 723 970-28 |
|  | Brushed Bronze                      | 27 723 970-42 |
|  | Brushed<br>Champagne (22kt<br>Gold) | 27 723 970-46 |
|  | Champagne (22kt<br>Gold)            | 27 723 970-47 |
|  | Brushed Dark<br>Platinum            | 27 723 970-99 |

27 723 970    Product version from 2/1/2023



Codes & Standards

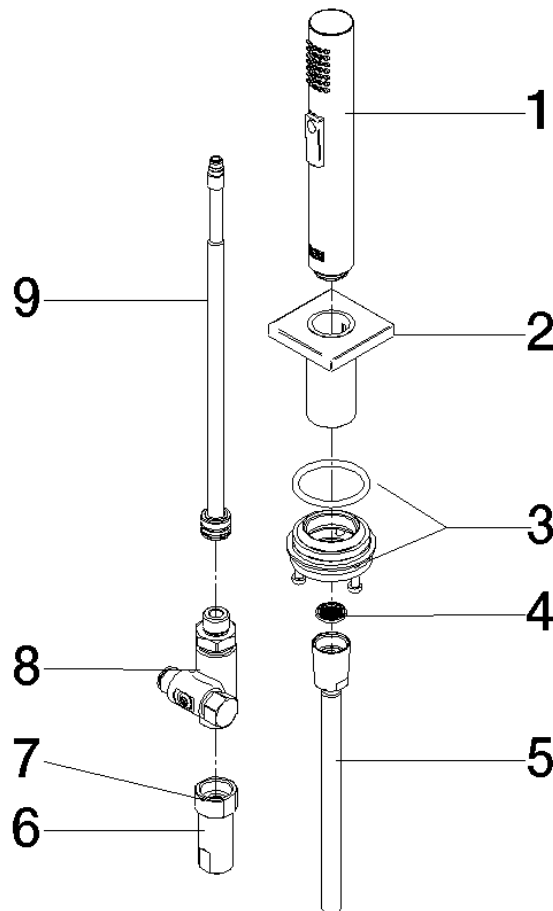
|          |          |        |       |
|----------|----------|--------|-------|
| DIN 4109 | ISO 3822 | NSF372 | NSF61 |
|----------|----------|--------|-------|

Ü-Zeichen

Certificates and sustainability

|        |              |            |
|--------|--------------|------------|
| LGA_29 | IAPMO_N-4976 | IAPMO_6397 |
|--------|--------------|------------|

Parts for other  
finishes can be found  
here: [Chrome](#)



## Spare parts list

| No. | Item Number        | Name       | Quantity used | Delivery time |
|-----|--------------------|------------|---------------|---------------|
| 1   | 04 12 11 158 00-06 | shower     | 1.00          | 10            |
| 4   | 09 23 01 039 90    | sieve      | 1.00          | 2             |
| 2   | 90 27 78 011 00-06 | shaft      | 1.00          | 10            |
| 9   | 90 28 20 068 00 90 | connection | 1.00          | 2             |
| 8   | 90 17 09 046 12 90 | diverter   | 1.00          | 2             |
| 3   | 90 30 10 058 00 90 | fixing set | 1.00          | 2             |
| 6   | 90 24 03 241 00 90 | nipple     | 1.00          | 2             |
| 5   | 90 30 02 062 00-06 | hose       | 1.00          | 10            |
| 7   | 90 14 20 026 00 90 | seal       | 1.00          | 2             |