



- spray flow
- automatic diverter for spout/Profi spray set
- height of mixer 665 mm
- individual rosette diameter 55mm
- profi spray hole diameter 30mm
- sprayface with anti-scaling system
- suspended spray with stainless steel spring (can be pivoted and locked)
- lead-free








Can only be combined with 32815682, 33826861, 32815861, 33836888, 32816888, 20816892, 33836875, 32815875.

Intrinsic protection against back flow.

Operating unit can be positioned freely.

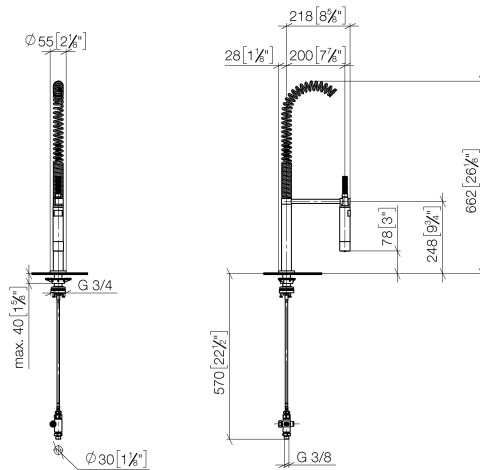
Button has to be pressed while using.

The profi spray can be installed either with or without a rosette

| | | |
|---|-----------------------|---------------|
|  | Platinum | 27 799 970-08 |
|  | Chrome | 27 799 970-00 |
|  | Brushed Platinum | 27 799 970-06 |
|  | Dark Chrome | 27 799 970-19 |
|  | Brushed Bronze | 27 799 970-42 |
|  | Brushed Chrome | 27 799 970-93 |
|  | Brushed Dark Platinum | 27 799 970-99 |

27 799 970 Product version from 10/1/2024

mm [inches]
1:10



Flow rate chart



Codes & Standards

DIN 4109

EN 1717

ISO 3822

NSF372

NSF61

Ü-Zeichen



Profi spray set - Platinum

SERIES-VARIOUS

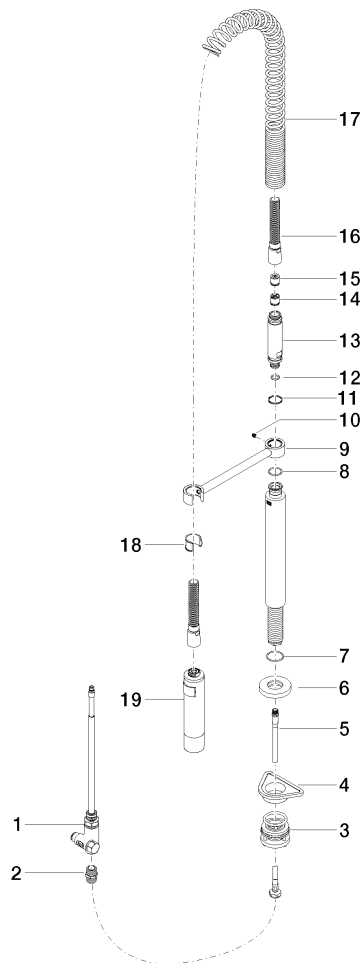
27 799 970 Product version from 10/1/2024

Certificates and sustainability

IAPMO_6397 LGA_38 Belgaqua_24-005-2 IAPMO_N-4976

27 799 970 Product version from 10/1/2024

Parts for other
finishes can be found
here: [Chrome](#)



Spare parts list

| No. | Item Number | Name | Quantity used | Delivery time |
|--|-----------------------|---------------------|---------------|---------------|
| | 2 90 24 03 250 00 90 | nipple | 1.00 | 2 |
| | 9 04 17 20 014 00-08 | holder | 1.00 | 40 |
| | 5 04 30 04 104 00 90 | hose | 1.00 | 2 |
| | 8 09 14 10 031 90 | seal | 1.00 | 2 |
| | 7 09 14 10 120 90 | seal | 1.00 | 2 |
| | 12 09 14 10 003 90 | seal | 1.00 | 2 |
| | 6 90 27 86 000 00-08 | rosette | 1.00 | - |
| Spare part can no longer be ordered, please order the replacement item | | | | |
| | 13 09 30 01 067 10-08 | adaptor | 1.00 | 40 |
| | 14 90 23 01 141 00 90 | back-flow preventer | 1.00 | 2 |
| | 3 04 23 10 004 03 90 | fixing set | 1.00 | 2 |
| | 18 90 18 40 035 00 90 | sleeve | 1.00 | 2 |
| | 4 09 18 40 090 90 | sleeve | 1.00 | 2 |
| | 10 09 31 11 049 90 | pin | 1.00 | 2 |
| | 11 09 14 15 012 90 | ring | 1.00 | 2 |
| | 15 09 23 01 046 90 | back-flow preventer | 1.00 | 2 |
| | 1 90 17 09 046 12 90 | diverter | 1.00 | 2 |
| | 19 04 12 11 094 10-08 | shower | 1.00 | 40 |
| | 16 90 30 02 065 00-08 | hose | 1.00 | - |
| Spare part can no longer be ordered, please order the replacement item | | | | |
| | 17 09 16 02 034 90 | spring | 1.00 | 2 |