

## Hand shower set with integrated shower holder FlowReduce - Brushed Durabrand (23kt Gold)

SERIES SPECIFIC

27 802 660 Product version from 10/1/2023



- COMPACT RAIN, max. flow rate 6.8 l/min (at 3 bar)
- with anti-scale system
- 3/8" shower outlet
- metal shower hose 1250mm with integrated anti-twist protection
- rosette Ø 60 mm
- 1/2" connection
- This product reduces water consumption by 28% (compared to requirements of EPAct '92)
- This product can contribute to Water Use Reduction in LEED® Green Building Rating
- This product can help a building meet the requirements of Green Building Rating Systems, e.g. LEED®, BREEAM®, DGNB

Intrinsic protection against back flow.

	Brushed Durabrand (23kt Gold)	27 802 660-28 0010
	Chrome	27 802 660-00 0010
	Brushed Platinum	27 802 660-06 0010
	Platinum	27 802 660-08 0010
	Dark Chrome	27 802 660-19 0010
	Light Gold	27 802 660-26 0010
	Brushed Light Gold	27 802 660-27 0010
	Matte Black	27 802 660-33 0010
	Brushed Bronze	27 802 660-42 0010
	Brushed Champagne (22kt Gold)	27 802 660-46 0010
	Champagne (22kt Gold)	27 802 660-47 0010
	Brushed Chrome	27 802 660-93 0010
	Brushed Dark Platinum	27 802 660-99 0010

### Recommended miscellaneous

**Concealed adapter -**

35 080 970-90  
0010

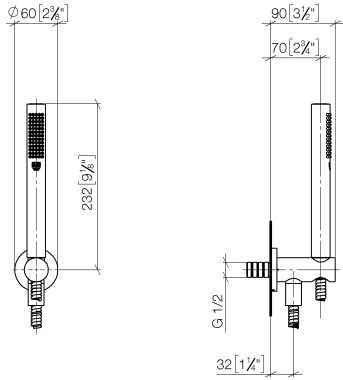




Hand shower set with integrated shower holder FlowReduce - Brushed  
Durabron (23kt Gold)

SERIES SPECIFIC

27 802 660 Product version from 10/1/2023  
mm [inches]

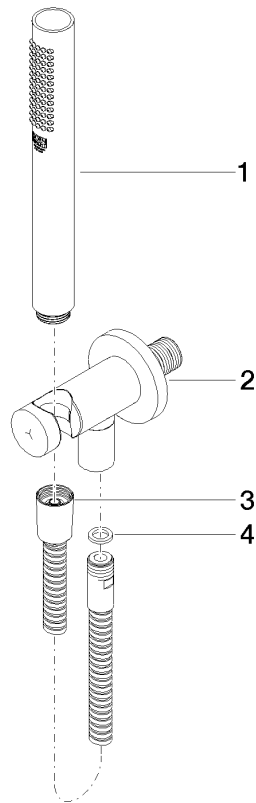


Codes & Standards

California Energy Commission (CEC)	DIN 4109	ISO 3822	Ü-Zeichen
------------------------------------------	----------	----------	-----------

Certificates and sustainability

LGA\_29



### Spare parts list

No.	Item Number	Name	Quantity used	Delivery time
3	90 30 02 072 00-28	Metal shower hose 1/2" x 3/8" x 1250 mm - Brushed Durabrand (23kt Gold)	1.00	20
2	28 490 660-28	Wall elbow with integrated shower holder - Brushed Durabrand (23kt Gold)	1.00	20
4	90 14 20 026 00 90	seal	1.00	2
1	90 12 11 140 41-28	shower	1.00	20