

WATER TUBE Kneipp wall elbow with hose holder with individual rosettes - Brushed Platinum

LULU

27 820 979



Fits: LULU, MADISON, TARA, LISSÉ, VAIA, META

- LAMINAR FLOW, max. flow rate 15 l/min (at 3 bar)
- rosette Ø 70 mm
- holder for Kneipp hose
- 1/2" wall elbow
- without hose

Intrinsic protection against back flow.


Product change as of 1.4.2023: max. flow 15 l/min

Intrinsic protection against back flow.

Product change as of 1.4.2023: max. flow 15 l/min

	Brushed Platinum	27 820 979-06
	Chrome	27 820 979-00
	Platinum	27 820 979-08
	Dark Chrome	27 820 979-19
	Brushed Durabronze (23kt Gold)	27 820 979-28
	Matte Black	27 820 979-33
	Brushed Bronze	27 820 979-42
	Brushed Champagne (22kt Gold)	27 820 979-46
	Champagne (22kt Gold)	27 820 979-47
	Brushed Chrome	27 820 979-93
	Brushed Dark Platinum	27 820 979-99

Required miscellaneous

	Concealed adapter -	35 080 970-90 0010
---	----------------------------	-----------------------

Required miscellaneous

	WATER TUBE Kneipp hose black 2000 mm - Brushed Platinum	28 286 979-06
	•with holding ring	
	•hose nozzle with sleeve M33	

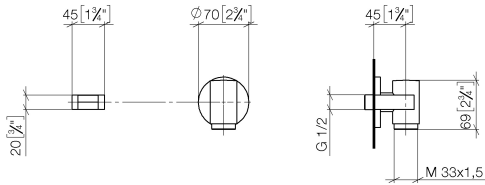
Required miscellaneous

	WATER TUBE Kneipp hose white 2000 mm - Brushed Platinum	28 285 979-06
	•with holding ring	
	•hose nozzle with sleeve M33	

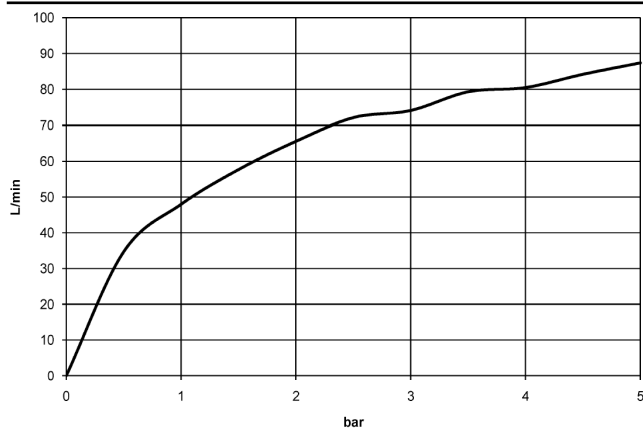
WATER TUBE Kneipp wall elbow with hose holder with individual rosettes - Brushed Platinum

LULU

27 820 979
mm [inches]



Flow rate chart



Codes & Standards

EN 1717



WATER TUBE Kneipp wall elbow with hose holder with individual rosettes - Brushed Platinum

LULU

27 820 979

Certificates

Belgaqua_21-381-2

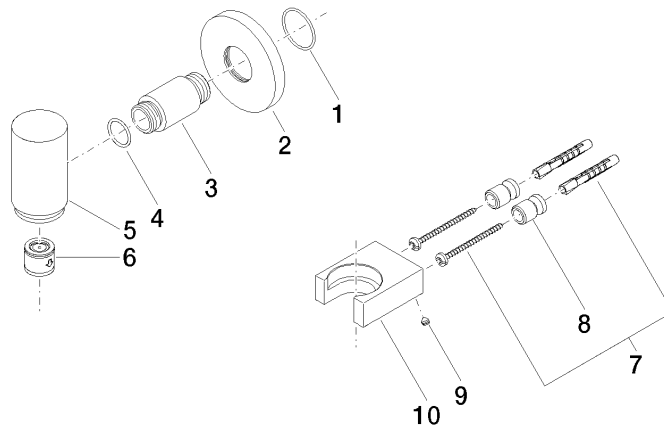
WATER TUBE Kneipp wall elbow with hose holder with individual rosettes - Brushed Platinum

LULU

27 820 979

Product version up to 3/12/2018

Product version from 3/12/2018





WATER TUBE Kneipp wall elbow with hose holder with individual rosettes -
Brushed Platinum

LULU

27 820 979

Spare parts list

Product version up to 3/12/2018

Product version from 3/12/2018

No.	Item Number	Name	Quantity used	Delivery time
	09 14 10 135 90	seal	10	2