

# Affusion pipe with cover plate - Brushed Dark Platinum




27 838 979 Product version from 3/2/2021



- LAMINAR FLOW, max. flow rate 15 l/min (at 3 bar)
- 3/8" shower outlet
- cover plate 240 x 60 mm
- metal shower hose 1250mm with integrated anti-twist protection
- 1/2" connection
- plug-link mounting

**Intrinsic protection against back flow.**

Intrinsic protection against back flow.

|   |                                |               |
|---|--------------------------------|---------------|
|  | Brushed Dark Platinum          | 27 838 979-99 |
|  | Chrome                         | 27 838 979-00 |
|  | Brushed Platinum               | 27 838 979-06 |
|  | Platinum                       | 27 838 979-08 |
|  | Dark Chrome                    | 27 838 979-19 |
|  | Brushed Light Gold             | 27 838 979-27 |
|  | Brushed Durabronze (23kt Gold) | 27 838 979-28 |
|  | Matte Black                    | 27 838 979-33 |
|  | Brushed Chrome                 | 27 838 979-93 |

## Required miscellaneous

**Concealed adapter -**

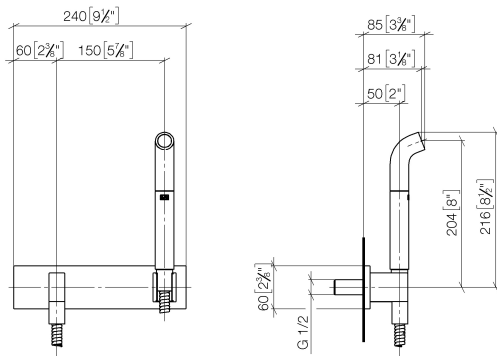
35 080 970-90  
0010



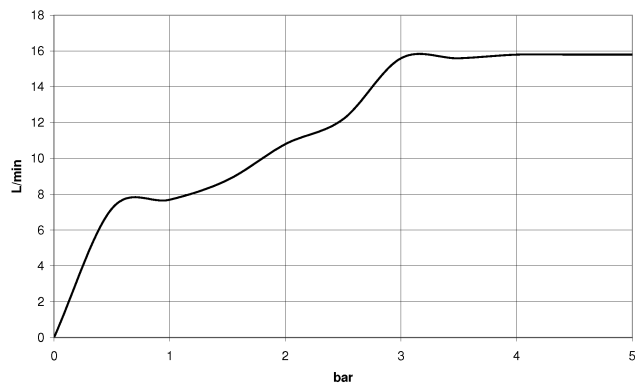
**Affusion pipe with cover plate - Brushed Dark Platinum**

27 838 979 Product version from 3/2/2021

mm [inches]



**Flow rate chart**



**Codes & Standards**

DIN 4109

EN 1717

ISO 3822

Ü-Zeichen



## Affusion pipe with cover plate - Brushed Dark Platinum

---

27 838 979 Product version from 3/2/2021

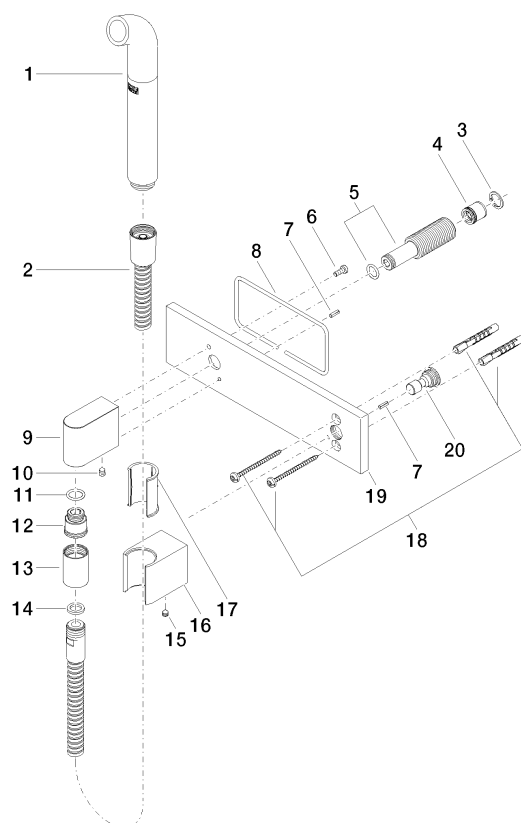
### Certificates

---

Belgaqua\_21-023-2 LGA\_38

## Affusion pipe with cover plate - Brushed Dark Platinum

27 838 979 Product version from 3/2/2021



### Spare parts list

| No. | Item Number        | Name  | Quantity used | Delivery time |
|-----|--------------------|---|---------------|---------------|
| 1   | 04 12 11 073 01-99 | spout   | 1             | 20            |
| 2   | 90 30 02 072 00-99 | Metal shower hose 1/2" x 3/8" x 1250 mm - Brushed Dark Platinum | 1             | 20            |
| 3   | 09 16 01 014 90    | ring  | 1             | 2             |
| 4   | 09 23 01 046 90    | back-flow preventer   | 1             | 2             |
| 5   | 90 24 03 212 00 90 | nipple  | 1             | 2             |
| 6   | 09 14 10 008 90    | seal  | 1             | 2             |
| 7   | 09 31 11 026 90    | pin   | 2             | 2             |
| 8   | 09 14 03 127 90    | seal  | 1             | 2             |
| 9   | 09 11 03 046-99    | connection  | 1             | 20            |
| 10  | 90 31 11 004 00 90 | pin   | 1             | 2             |
| 11  | 90 14 10 077 00 90 | seal  | 1             | 2             |
| 12  | 09 24 03 107 20 90 | nipple  | 1             | 2             |
| 13  | 90 21 02 069 00-99 | cover   | 1             | 20            |
| 14  | 90 14 20 026 00 90 | seal  | 1             | 2             |
| 15  | 90 31 11 112 00 90 | pin   | 1             | 2             |
| 16  | 09 17 20 044-99    | holder  | 1             | 20            |
| 17  | 09 18 40 078 90    | sleeve  | 1             | 2             |
| 18  | 05 30 31 025 00 90 | fixing set  | 1             | 2             |
| 19  | 09 11 02 133-99    | plate   | 1             | 20            |
| 20  | 09 24 03 073 90    | nipple  | 1             | 2             |