

# Wall bracket - Brushed Chrome

28 050 980    Product version from 3/2/2021

- rosette 60 x 60 mm

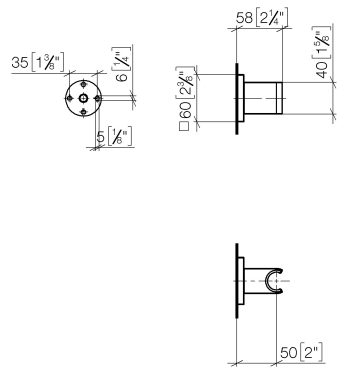


|   |                                     |               |
|---|-------------------------------------|---------------|
|    | Brushed Chrome                      | 28 050 980-93 |
|    | Chrome                              | 28 050 980-00 |
|    | Brushed Platinum                    | 28 050 980-06 |
|    | Platinum                            | 28 050 980-08 |
|    | Dark Chrome                         | 28 050 980-19 |
|    | Brushed Light Gold                  | 28 050 980-27 |
|    | Brushed Durabrass<br>(23kt Gold)    | 28 050 980-28 |
|    | Matte Black                         | 28 050 980-33 |
|    | Brushed<br>Champagne (22kt<br>Gold) | 28 050 980-46 |
|   | Champagne (22kt<br>Gold)            | 28 050 980-47 |
|   | Cyprum                              | 28 050 980-49 |
|  | Brushed Dark<br>Platinum            | 28 050 980-99 |

# Wall bracket - Brushed Chrome

28 050 980    Product version from 3/2/2021

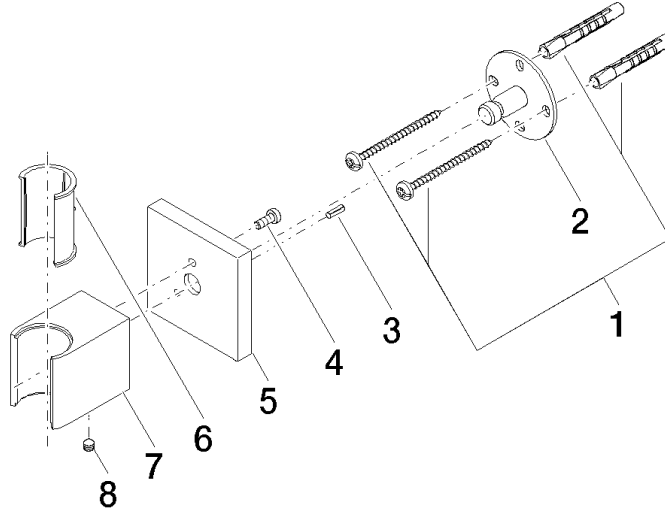
mm [inches]



## Wall bracket - Brushed Chrome

28 050 980 Product version from 3/2/2021

Parts for other  
finishes can be found  
here: [Chrome](#)



### Spare parts list

| No. | Item Number        | Name       | Quantity used | Delivery time |
|-----|--------------------|------------|---------------|---------------|
| 1   | 05 30 31 025 00 90 | fixing set | 1             | 2             |
| 2   | 09 30 11 041 90    | disc       | 1             | 2             |
| 3   | 09 31 11 026 90    | pin        | 1             | 2             |
| 4   | 09 30 30 054 90    | screw      | 1             | 2             |
| 5   | 09 27 98 002-93    | rosette    | 1             | 20            |
| 6   | 09 18 40 078 90    | sleeve     | 1             | 2             |
| 7   | 09 17 20 044-93    | holder     | 1             | 20            |
| 8   | 90 31 11 112 00 90 | pin        | 1             | 2             |