

LISSÉ Wall elbow - Brushed Dark Platinum

LISSÉ



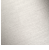




28 450 845



- 3/8" shower outlet
- rosette 60 x 78 mm
- 1/2" connection
- WRAS 2310091

Intrinsic protection against back flow.

Intrinsic protection against back flow.

	Brushed Dark Platinum	28 450 845-99
	Chrome	28 450 845-00
	Brushed Platinum	28 450 845-06
	Dark Chrome	28 450 845-19
	Brushed Light Gold	28 450 845-27
	Matte Black	28 450 845-33
	Brushed Chrome	28 450 845-93

Required miscellaneous

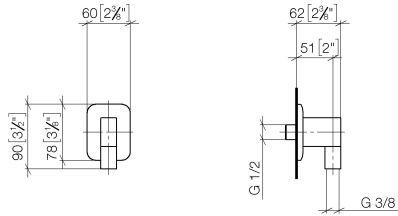
Concealed adapter -

35 080 970-90
0010

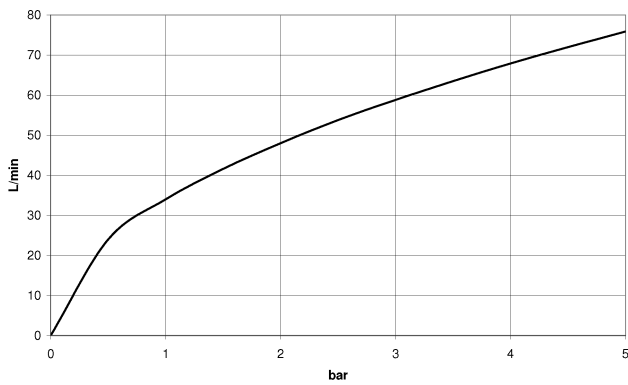


28 450 845

mm [inches]



Flow rate chart



Codes & Standards

ASME
A112.18.1/CSA
B125.1

Scottish Water
Byelaws

UK Water Supply
Regulations



LISSE Wall elbow - Brushed Dark Platinum

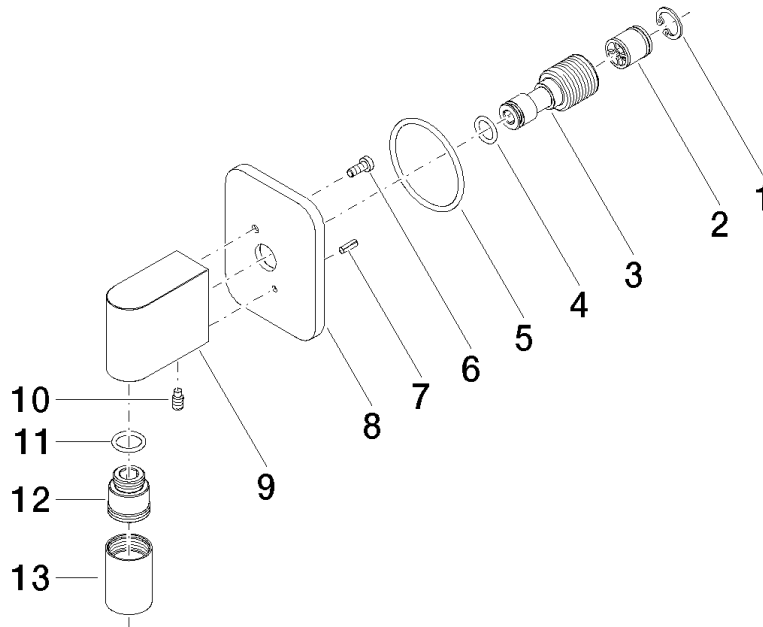
LISSE

28 450 845

Certificates

WRAS_2310

Product version from 3/2/2021





LISSE Wall elbow - Brushed Dark Platinum

LISSE

28 450 845

Spare parts list

Product version from 3/2/2021

No.	Item Number	Name	Quantity used	Delivery time
	09 16 01 014 90	ring	13	2