

## Wall elbow - Brushed Bronze

IMO

28 450 980



- 3/8" shower outlet
  - rosette 60 x 60 mm
  - 1/2" connection
  - WRAS 2310091
- Intrinsic protection against back flow.**

Intrinsic protection against back flow.

Fits: IMO, MEM, CL.1, CYO

	Brushed Bronze	28 450 980-42
	Chrome	28 450 980-00
	Brushed Platinum	28 450 980-06
	Platinum	28 450 980-08
	Durabronze (23kt Gold)	28 450 980-09
	Dark Chrome	28 450 980-19
	Brushed Light Gold	28 450 980-27
	Brushed Durabronze (23kt Gold)	28 450 980-28
	Matte Black	28 450 980-33
	Brushed Champagne (22kt Gold)	28 450 980-46
	Champagne (22kt Gold)	28 450 980-47
	Cyprum	28 450 980-49
	Brushed Chrome	28 450 980-93
	Brushed Dark Platinum	28 450 980-99

### Required miscellaneous

**Concealed adapter -**

35 080 970-90  
0010



## Wall elbow - Brushed Bronze

IMO

28 450 980

mm [inches]



### Flow rate chart



### Codes & Standards

EN 1717

Scottish Water  
Byelaws

UK Water Supply  
Regulations



## Wall elbow - Brushed Bronze

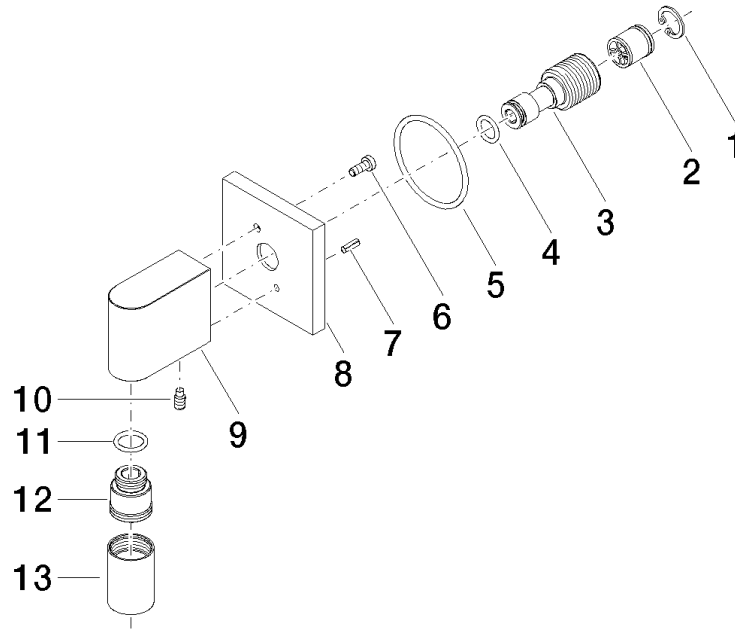
IMO

28 450 980

### Certificates

WRAS\_2310

Belgaqua\_22\_280\_2





## Wall elbow - Brushed Bronze

IMO

28 450 980

### Spare parts list