

## Wall elbow - Brushed Chrome

IMO

28 450 980



- 3/8" shower outlet
- rosette 60 x 60 mm
- 1/2" connection
- WRAS 2310091

Intrinsic protection against back flow.

Fits: IMO, MEM, CL.1, CYO

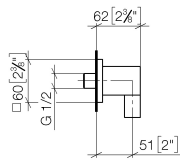
|  |                               |               |
|--|-------------------------------|---------------|
|    | Brushed Chrome                | 28 450 980-93 |
|    | Chrome                        | 28 450 980-00 |
|    | Brushed Platinum              | 28 450 980-06 |
|    | Platinum                      | 28 450 980-08 |
|    | Durabrass (23kt Gold)         | 28 450 980-09 |
|    | Dark Chrome                   | 28 450 980-19 |
|    | Brushed Light Gold            | 28 450 980-27 |
|    | Brushed Durabrass (23kt Gold) | 28 450 980-28 |
|    | Matte Black                   | 28 450 980-33 |
|   | Brushed Champagne (22kt Gold) | 28 450 980-46 |
|  | Champagne (22kt Gold)         | 28 450 980-47 |
|  | Cyprum                        | 28 450 980-49 |
|  | Brushed Dark Platinum         | 28 450 980-99 |

Wall elbow - Brushed Chrome

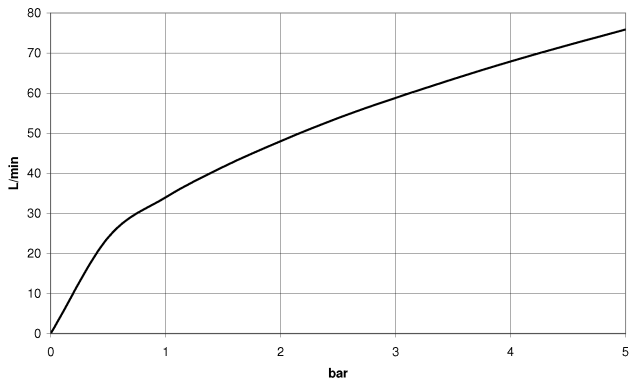
IMO

28 450 980

mm [inches]



Flow rate chart



Codes & Standards

|                |      |         |                        |
|----------------|------|---------|------------------------|
| ASME A112.18.1 | cUPC | EN 1717 | Scottish Water Byelaws |
|----------------|------|---------|------------------------|

UK Water Supply Regulations



Wall elbow - Brushed Chrome

IMO

28 450 980

Certificates

|            |           |           |                   |
|------------|-----------|-----------|-------------------|
| IAPMO_4976 | WRAS_1807 | WRAS_2310 | Belgaqua_22_280_2 |
|------------|-----------|-----------|-------------------|

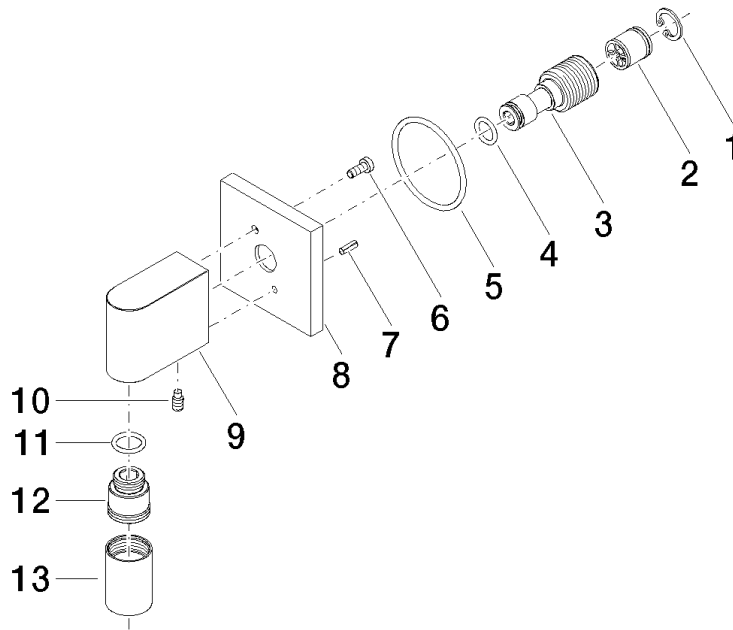
28 450 980

Product version up to 7/6/2018

Product version from 7/6/2018 to 3/2/2021

**Product version from 3/2/2021**

Parts for other  
finishes can be found  
here: [Chrome](#)





## Wall elbow - Brushed Chrome

IMO

28 450 980

### Spare parts list

Product version up to 7/6/2018

Product version from 7/6/2018 to 3/2/2021

#### **Product version from 3/2/2021**

| No. | Item Number     | Name | Quantity used | Delivery time |
|-----|-----------------|------|---------------|---------------|
|     | 09 16 01 014 90 | ring | 13            | 2             |